

# TRACT N° 36-50 CHATEAUX ENCHANTÉS

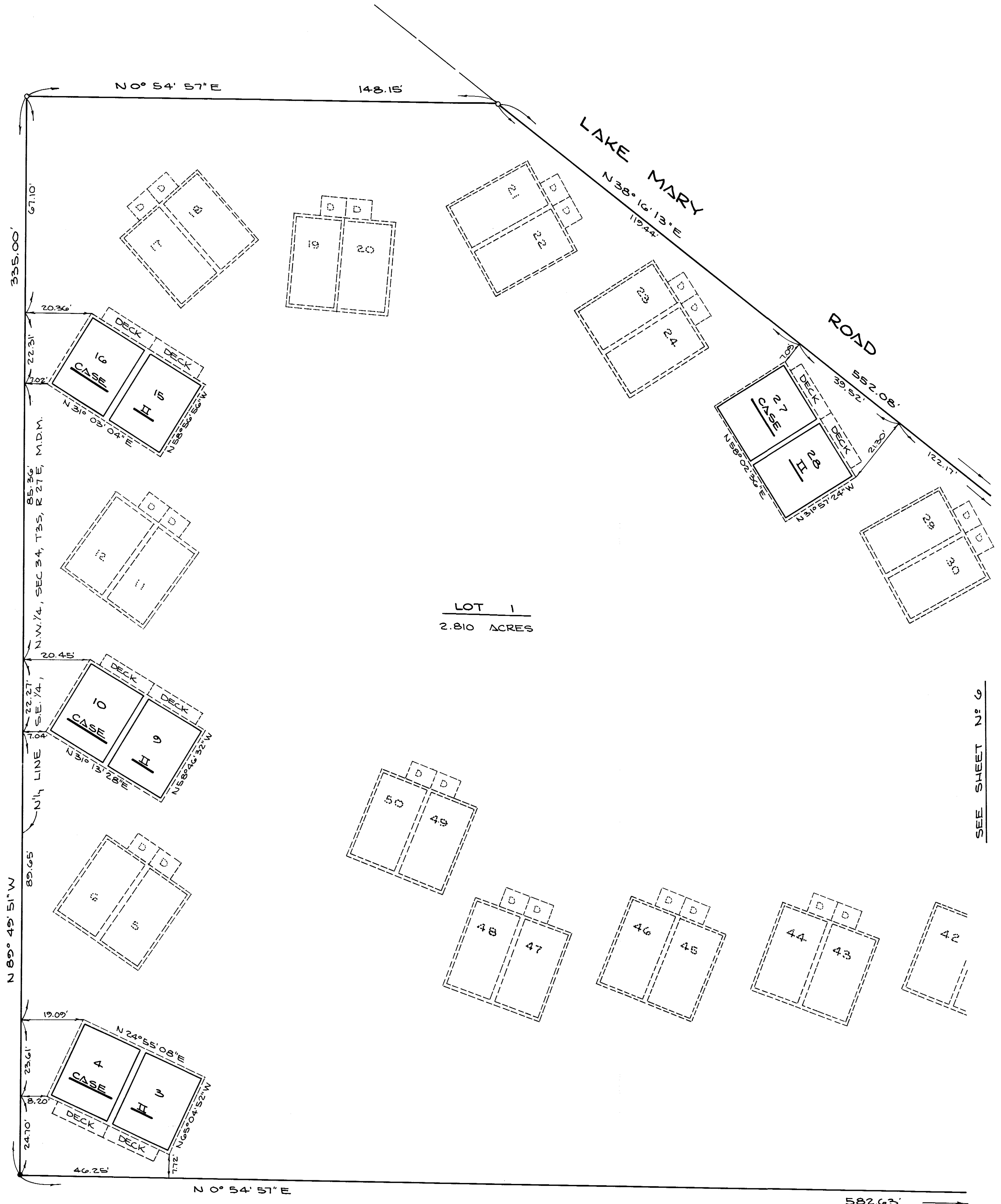
IN UNINCORPORATED TERRITORY OF MONO COUNTY, CALIFORNIA



1 LOT AND 50 CONDOMINIUM UNITS  
OCTOBER, 1972  
WILLIAMSON & SCHMID, CIVIL ENGINEERS

2.810 ACRES  
GERALD F. OLDENBURG, L.S. 3246

FOR CONDOMINIUM PURPOSES



NOTE:  
1. SEE SHEET N° 4 FOR GENERAL NOTES.

SEE SHEET N° 6

Subdiv.  
Vol. 8, Pg. 20-21