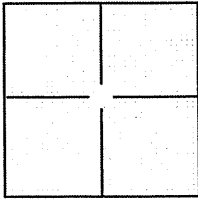


CORNER RECORD

BK 77 PG 9Document Number CR 8019City of CASTRO VALLEY AREACounty of ALAMEDA, CaliforniaBrief Legal Description ALAMEDA COUNTY MONUMENT NO. JG98Y3. FOUND MONUMENT IN BERTERO AVE. AT INTERSECTION OF SILVERLEAF DRIVE.

CORNER TYPE

Government Corner ☐Control ☐Meander ☐Property ☐Rancho ☐Other ☐

COORDINATES(Optional)

N. _____

E. _____

Zone: _____ NAD27 ☐ NAD83 ☐NAD83 Epoch ALAMEDA

Elev. _____

Vert. Datum: NGVD29 ☐ NADV88 ☐Meas. Units: Metric ☐ Imperial ☒Date of Survey DECEMBER 11, 2015.Corner - Left as found ☒ Found and tagged ☐ Established ☐ Reestablished ☐ Rebuilt ☐

Identification and type of corner found: Evidence used to identify or procedure used to establish or reestablish the corner:

FOUND 3" MONUMENT NO. JG98Y3 IN MONWELL. ESTABLISHED
PRE-CONSTRUCTION SURVEY MONUMENT TIES AS SHOWN ON SHEET 2 OF 2.

A description of the physical condition of the monument as found and as set or reset

I SET FOUR SCRIBED "X's" IN TOP OF CURBS FOR REFERENCE POINTS AS
SHOWN ON SHEET 2 OF 2.

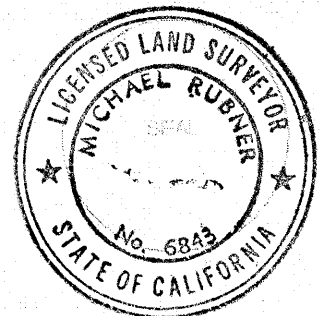
SURVEYOR'S STATEMENT

This Corner Record was prepared by me or under my direction in conformance with
the Land Surveyor's Act on DECEMBER 13, 2015.Signed [Signature] P.L.S. or R.C.E. No.: LS 5837

COUNTY SURVEYOR'S STATEMENT

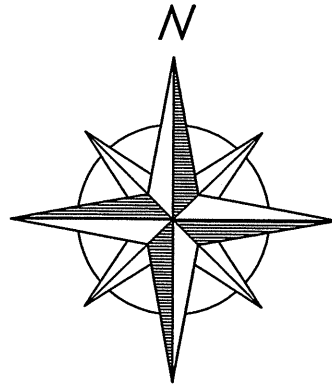
This Corner Record was received 19 JANUARY, 2016 and examined
and filed 17 FEBRUARY, 2016.Signed Michael Rubner P.L.S. or R.C.E. No.: 6843Title COUNTY SURVEYOR

County Surveyor's Comment _____

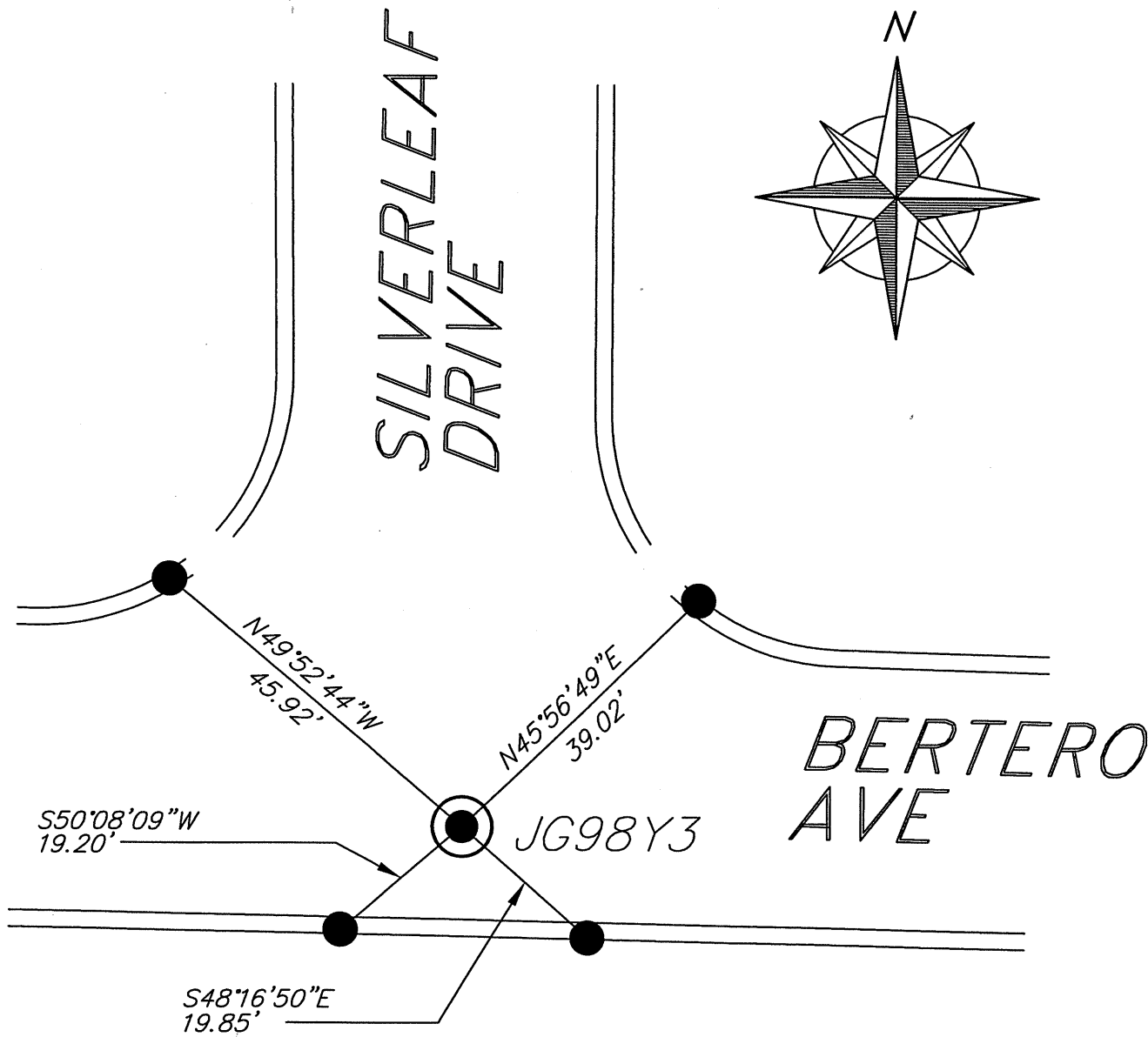
SPEC 2279R23432

POINT "JG98Y3"

SILVERLEAF
DRIVE



BERTERO
AVE



LEGEND



FOUND 3" DISK IN MONWELL.



SET SCRIBED "X" IN TOP OF CURB
UNLESS OTHERWISE NOTED.

JG98Y3 ALAMEDA COUNTY MONUMENT
NUMBER.

NOT TO SCALE