

## CORNER RECORD

COUNTY OF MONO T. 2N R. 26E MT. DIABLO MERIDIAN CALIFORNIA  
CORNER TYPE: GOV'T. CORNER ☐ MEANDER ☐ RANCHO ☐ CONTROL ☐ OTHER ☒  
CORNER IDENTIFICATION - DATE OF VISIT May 8 1932

CORNER - LEFT AS FOUND ☒ FOUND AND TAGGED ☐ REESTABLISHED OBLITERATED CORNER ☐ REBUILT ☐

PHYSICAL DESCRIPTION OF CORNER FOUND: EVIDENCE AND METHOD USED TO IDENTIFY OR REESTABLISH

[illegible]

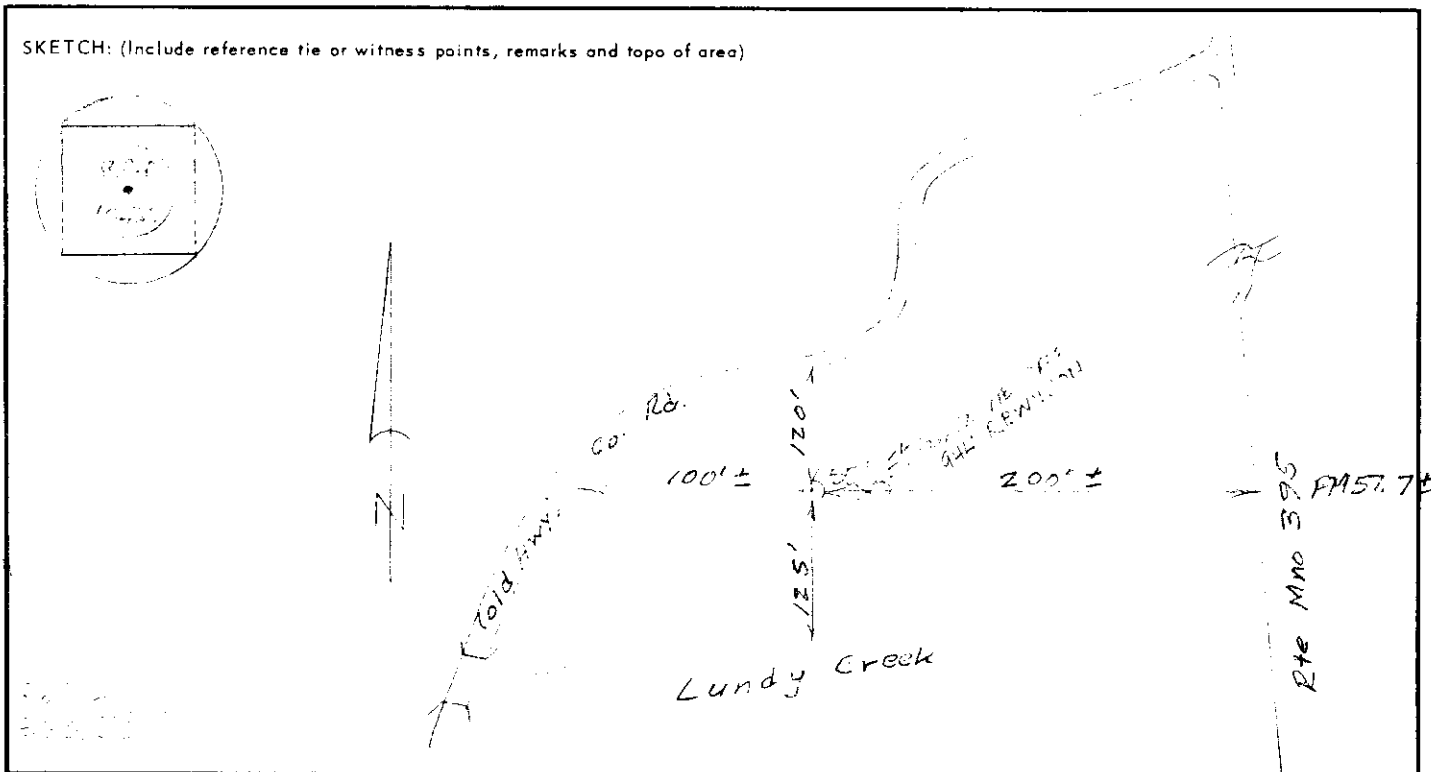
PHYSICAL DESCRIPTION OF MONUMENTS REBUILT OR PERPETUATED

CALIFORNIA COORDINATE SYSTEM ORDER:    FIRST ☐    SECOND ☐    THIRD ☐

STATIONS USED: NGS (USC & GS) ☐ STATE ☐ COUNTY ☐ OTHER ☐ STATION \_\_\_\_\_ STATION \_\_\_\_\_

ZONE 3 ELEVATION \_\_\_\_\_ NORTHINGS (Y) \_\_\_\_\_ EASTINGS (X) \_\_\_\_\_

SKETCH: (Include reference tie or witness points, remarks and topo of area)



### SURVEYOR'S CERTIFICATE

THIS CORNER RECORD WAS PREPARED BY ME OR UNDER MY  
DIRECTION IN CONFORMANCE WITH THE LAND SURVEYORS ACT  
ON May 1 1963

SIGNED: \_\_\_\_\_

L.S. or R.C.E. No.: \_\_\_\_\_

SEAL

## COUNTY SURVEYOR'S CERTIFICATE

THIS CORNER RECORD WAS RECEIVED JUNE 10 19 80  
AND EXAMINED AND FILED APRIL 10 19 81

BY: KICA BOWEN

TITLE: Deputy County Supervisor

DOCUMENT No. 71-26-18-E

STATEMENT ON BACK OF SHEET

YES ☐ NO ☒