

LIGHTING LEGEND

TAG	DESCRIPTION
	INTERIOR RECESSED DOWNLIGHT
	INTERIOR RECESSED DOWNLIGHT
	INTERIOR RECESSED DOWNLIGHT
	PENDANT
	PENDANT
	PENDANT
	TRACK LIGHT
	VANITY LIGHT
	WALL SCONCE
	2X4 LAY-IN TROFFER
	2X4 NIGHT LIGHT
	2X4 EMERGENCY LIGHT
	EXIT/EMERGENCY LIGHT W/ BATTERY PACK AND DUAL HEADS
	EXIT/EMERGENCY LIGHT WITH BATTERY PACK
	EXIT LIGHT (SURFACE MOUNTED)
	EXIT LIGHT (CEILING MOUNTED)
	REMOTE EMERGENCY HEADS
	EMERGENCY BATTERY PACK AND DUAL HEADS
	DIMMER SWITCH EQUAL TO LUTRON NOVA SERIES T
	TOGGLE SWITCH SINGLE POLE SWITCH WITH COVER PLATE
	TOGGLE SWITCH 2 POLE SWITCH WITH COVER PLATE
	TOGGLE SWITCH 3 WAY SWITCH WITH COVER PLATE
	TOGGLE SWITCH KEY OPERATED SWITCH WITH COVER PLATE
	PHOTOCELL
	WALL MOUNTED OCCUPANCY SENSOR / DIMMER
	CEILING MOUNTED OCCUPANCY SENSOR

ELECTRICAL LEGEND

DETAIL	DESCRIPTION
	SIMPLEX RECEPTACLE
	DUPLEX RECEPTACLE
	DUPLEX RECEPTACLE ABOVE COUNTER
	DUPLEX RECEPTACLE - GFCI
	DUPLEX RECEPTACLE - GFCI ABOVE COUNTER
	SPLIT RECEPTACLE
	DUPLEX RECEPTACLE - WITH WEATHERPROOF COVER & GFCI
	DOUBLE DUPLEX RECEPTACLE
	DUPLEX RECEPTACLE IN CEILING
	DUPLEX RECEPTACLE - 20A, 125V, WITH ISOLATED GROUND
	BRANCH CIRCUIT HOME-RUN WITH CIRCUIT NUMBER
	FLOOR MOUNTED DUPLEX RECEPTACLE
	SPECIAL RECEPTACLE (SEE PLANS FOR TYPE)
	JUNCTION BOX
	MOTOR (SINGLE PHASE & THREE PHASE)
	TIME CLOCK
	VOLUME CONTROL
	PULL BOX - SIZE & TYPE AS REQUIRED
	TELEPHONE / DATA OUTLET
	TV CABLE OUTLET
	DISCONNECT - NON FUSED
	DISCONNECT - FUSED
	UTILITY METER
	ELECTRICAL PANEL

GENERAL NOTES:

- ALL WORK TO COMPLY TO ALL STATE, LOCAL, NEC, & NFPA CODES.
- ELECTRICAL CONTRACTOR TO VISIT THE SITE PRIOR TO SUBMITTING A BID & INCLUDE IN THEIR BID ANY ITEMS NECESSARY FOR A COMPLETE & OPERATIONAL SYSTEM.
- DRAWINGS ARE SCHEMATIC IN NATURE. ELECTRICAL CONTRACTOR IS TO ADD ANY ITEMS THAT ARE REQUIRED FOR A COMPLETE & OPERATIONAL SYSTEM IN THEIR PROPOSAL.
- ELECTRICAL CONTRACTOR IS TO COORDINATE THEIR INSTALLATION WITH THE OTHER TRADES. IF A CONFLICT OCCURS AND IT IS DUE TO THE ELECTRICAL CONTRACTOR'S LACK OF COORDINATION, ALL WORK INVOLVED IN RESOLVING THE CONFLICT WILL BE AT THE EXPENSE OF THE ELECTRICAL CONTRACTOR.
- ELECTRICAL CONTRACTOR TO PAY ALL FEES AND PERMITS.
- SEE ARCHITECTURAL DRAWINGS FOR PATIO CONDUIT DETAIL. COORDINATE PRIOR TO ROUGH-IN.
- ANY MC CABLE MUST BE RUN IN WALL. ALL CONDUIT OUTSIDE OF WALL TO BE HARD PIPE.
- CANOPY LIGHTING CONDUIT SHALL BE RUN IN MC CABLE.
- NO LIGHTING SUBSTITUTIONS.

CONDUITS AND WIRING NOTES:

ALL WIRING RUN THROUGH TENANTS EXPOSED CEILING SHALL BE IN EMT OR IMC AND RUN TIGHT TO THE DECK OR EITHER PARALLEL OR PERPENDICULAR TO MAIN ENTRY STOREFRONT. THERE SHALL BE NO DIAGONAL RUNS AND ALL CONDUITS SHALL BE IN STRAIGHT LINES.

SITE CONDUIT NOTES:

PROVIDE ALL SITE ELECTRICAL CONDUITS TO EXACT LOCATIONS CALLED FOR IN ARCHITECTURAL SITE PLAN.

CODED NOTES: (#)

- VEHICLE LOOP. REFER TO SITE CONDUIT DETAIL ON THIS PAGE CIVIL AND ARCHITECTURAL PLANS FOR CONTINUATION.
- VEHICLE LOOP. REFER TO SITE CONDUIT DETAIL ON THIS PAGE CIVIL AND ARCHITECTURAL PLANS FOR CONTINUATION.
- DIGITAL MARKETING BOARD. REFER TO SITE CONDUIT DETAIL.
- CLEARANCE BAR. REFER TO SITE CONDUIT DETAIL.
- LINE IN VOLTAGE J BOX. REFER TO SITE CONDUIT DETAIL.
- PROVIDE PARKING AREA LIGHT - SEE LUMINAIRE SCHEDULE AND POLE BASE DETAIL. REFER TO CIVIL SITE PLAN FOR FURTHER INFORMATION AND COORDINATION. PROVIDE CONDUIT TO LINE VOLTAGE IN-GRADE J-BOX. REFER TO SITE CONDUIT DETAIL.
- VEHICLE DETECTOR IN GRADE J BOX. REFER TO SITE CONDUIT DETAIL.
- PROVIDE (2) #10, #10 G. IN 1" CONDUIT FROM NEW SITE LIGHTING TO JUNCTION BOX AS SHOWN FOR FUTURE CONNECTION WITHIN BUILDING BY TENANT.
- UTILITY COMPANY PROVIDED PAD MOUNTED TRANSFORMER. COORDINATE SPECIFICATIONS AND LOCATION WITH LOCAL UTILITY COMPANY PRIOR TO BID.
- UNDERGROUND PRIMARY ELECTRIC BY LOCAL UTILITY. PROVIDE (2) 5" EMPTY CONDUIT WITH PULLSTRING TO PAD-MOUNTED TRANSFORMER. COORDINATE WITH CIVIL PLANS AND LOCAL UTILITY.
- UNDERGROUND SECONDARY ELECTRIC. SEE ONE LINE DIAGRAM & FLOOR PLAN FOR FURTHER INFORMATION.
- PATIO LIGHTING BY TENANT. PULL 1" EMPTY CONDUIT WITH PULLSTRING TO FUTURE PANELBOARD LOCATION. REFER TO ARCHITECTURAL PLANS FOR EXACT LOCATIONS.
- MONUMENT SIGN. REFER TO NOTE 5 ON SITE CONDUIT PLAN.

ABBREVIATIONS

(A)	EXISTING TO BE ABANDONED	INC	INCANDESCENT
(D)	EXISTING TO BE DEMOLISHED	KVA	KILOVOLT AMPERE
(E)	EXISTING TO REMAIN	KW	KILOWATT
(F)	FUTURE	LTG	LIGHTING OR LIGHT
(R)	EXISTING TO BE RELOCATED	LRA	LOCKED ROTOR AMPS
A	AMPERE	MCA	MAXIMUM CURRENT AMPACITY
AC	ALTERNATING CURRENT OR AIR CONDITIONER	MCB	MAIN CIRCUIT BREAKER
AFF	ABOVE FINISHED FLOOR	MCC	MOTOR CONTROL CENTER
AFG	ABOVE FINISHED GRADE	MDP	MAIN DISTRIBUTION PANEL
AIC	AMPS INTERRUPTING CAPACITY	MLO	MAIN LUGS ONLY
ANNC	ANNUNCIATOR	MOCP	MAXIMUM OVERCURRENT PROTECTION
AWG	AMERICAN WIRE GAUGE	MSB	MAIN SWITCHBOARD
BPS	BOLTED PRESSURE SWITCH	MH	METAL HALIDE
C	CONDUIT	MTS	MANUAL TRANSFER SWITCH
CB	CIRCUIT BREAKER	NAC	NOTIFICATION APPLIANCE CIRCUIT
CCTV	CLOSED CIRCUIT TELEVISION	NC	NORMALLY CLOSED
CKT	CIRCUIT	NO	NORMALLY OPEN
CM	CONSTRUCTION MANAGER	NF	NON-FUSED
DC	DIRECT CURRENT	OCC	OCCUPANCY
DP	DISTRIBUTION PANELBOARD	PA	PUBLIC ADDRESS
DTT	DOUBLE TWIN TUBE	PB	PULL BOX OR PUSH BUTTON
EB	ELECTRONIC BALLAST	PVC	POLYVINYL CHLORIDE (PLASTIC PIPE)
EC	ELECTRICAL CONTRACTOR	PWR	POWER
EM	EMERGENCY	RECP	RECEPTACLE
EMT	ELECTRICAL METAL TUBING	STP	SHIELDED, TWISTED PAIR
EW	ELECTRIC WATER COOLER	TC	TIME CLOCK
FA	FIRE ALARM	TBT	TRIPLE TUBE
FLA	FULL LOAD AMPS	TYP	TYPICAL
G	GROUND	UNO	UNLESS NOTED OTHERWISE
GC	GENERAL TRADES CONTRACTOR	UTP	UNSHIELDED, TWISTED PAIR
GFCI	GROUND FAULT CIRCUIT INTERRUPTER	V	VOLT
GEN	GENERATOR	W	WATT
HOA	HAND-OFF-AUTOMATIC	WAP	WIRELESS ACCESS POINT
HP	HORSEPOWER	WH	WATTHOUR
HPC	HIGH PRESSURE CONTACT SWITCH	WP	WEATHERPROOF, NEMA 3R UNO
HZ	HERTZ	XFMR	TRANSFORMER
IG	ISOLATED GROUND	Z	IMPEDANCE
IMC	INTERMEDIATE METAL CONDUIT		PHASE

TAG DESCRIPTION

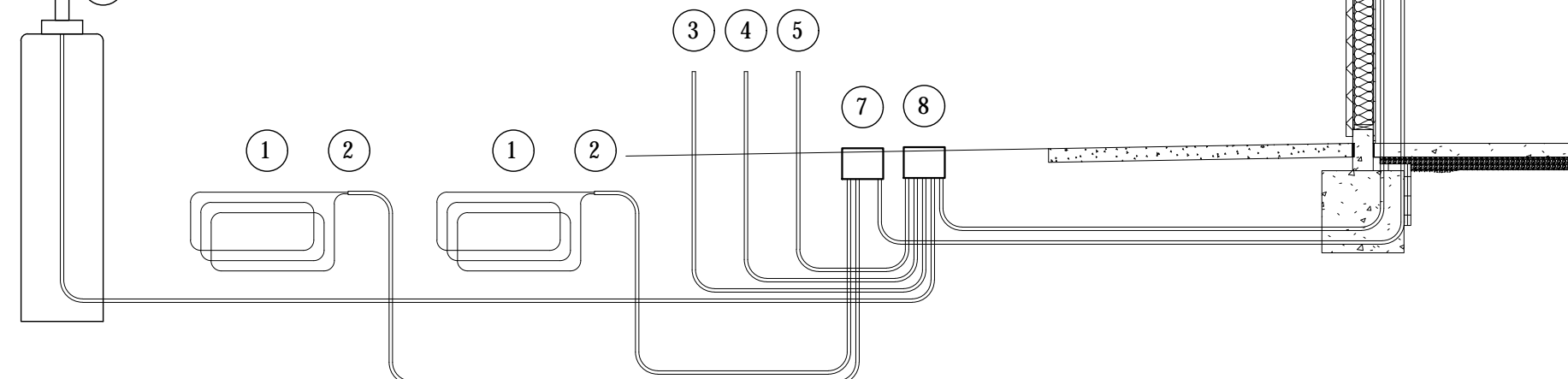
- VEHICLE DETECTOR LOOP - 6"x4" WITH 4 TURNS (EMX PR-46-XX). VERIFY LENGTH OF LEAD-IN WIRE PRIOR TO ORDERING TO ALLOW WIRE TO REACH VEHICLE DETECTOR WITHOUT SPLICING. SEE SITE PLAN FOR LOCATIONS.
- 1" CONDUIT FROM VEHICLE DETECTOR LOOP LOCATION TO VEHICLE DETECTOR IN-GRADE J-BOX.
- 1" CONDUIT FROM MARKETING BOARD LOCATION TO LINE VOLTAGE IN-GRADE J-BOX. SEE SITE PLAN FOR LOCATION.
- 1" CONDUIT FROM CLEARANCE BAR LOCATION TO LINE VOLTAGE IN-GRADE J-BOX. SEE SITE PLAN FOR LOCATION.
- 1" CONDUIT FROM SITE DIRECTIONAL SIGNAGE AND/OR MONUMENT SIGN LOCATION(S) TO LINE VOLTAGE IN-GRADE J-BOX. SEE SITE PLAN FOR LOCATIONS AND NUMBER OF ROUGH-IN LOCATIONS.
- 1" CONDUIT FROM SITE LIGHTING FIXTURE(S) TO LINE VOLTAGE IN-GRADE J-BOX. SITE LIGHTING FIXTURES CAN BE DAISY-CHAINED.
- VEHICLE DETECTOR IN-GRADE J-BOX - MINIMUM 12"x12"x8" WET-LISTED IN-GRADE JUNCTION BOX IN LANDSCAPING AREA AT REAR OF BUILDING AND WITH TOP SET 1" ABOVE FINISHED GRADE. SEE SITE PLAN FOR LOCATION.
- LINE VOLTAGE IN-GRADE J-BOX - MINIMUM 12"x12"x8" WET-LISTED IN-GRADE JUNCTION BOX IN LANDSCAPING AREA AT REAR OF BUILDING AND WITH TOP SET 1" ABOVE FINISHED GRADE. SEE SITE PLAN FOR LOCATION.
- LINE VOLTAGE J-BOX AND CONDUIT - MINIMUM 6"x6"x4" J-BOX ON INTERIOR WALL OF BUILDING AT 11'-0" AFF AND 2" CONDUIT FROM INTERIOR J-BOX TO LINE VOLTAGE IN-GRADE J-BOX. SEE SITE PLAN FOR LOCATION.
- VEHICLE DETECTOR J-BOX AND CONDUIT - 8"x8"x4" J-BOX SURFACE-MOUNTED ON INTERIOR WALL OF BUILDING AT 9'-0" AFF AND 2" CONDUIT FROM INTERIOR J-BOX TO VEHICLE DETECTOR IN-GRADE J-BOX. SEE FLOOR PLAN FOR LOCATION.

RESPONSIBILITY

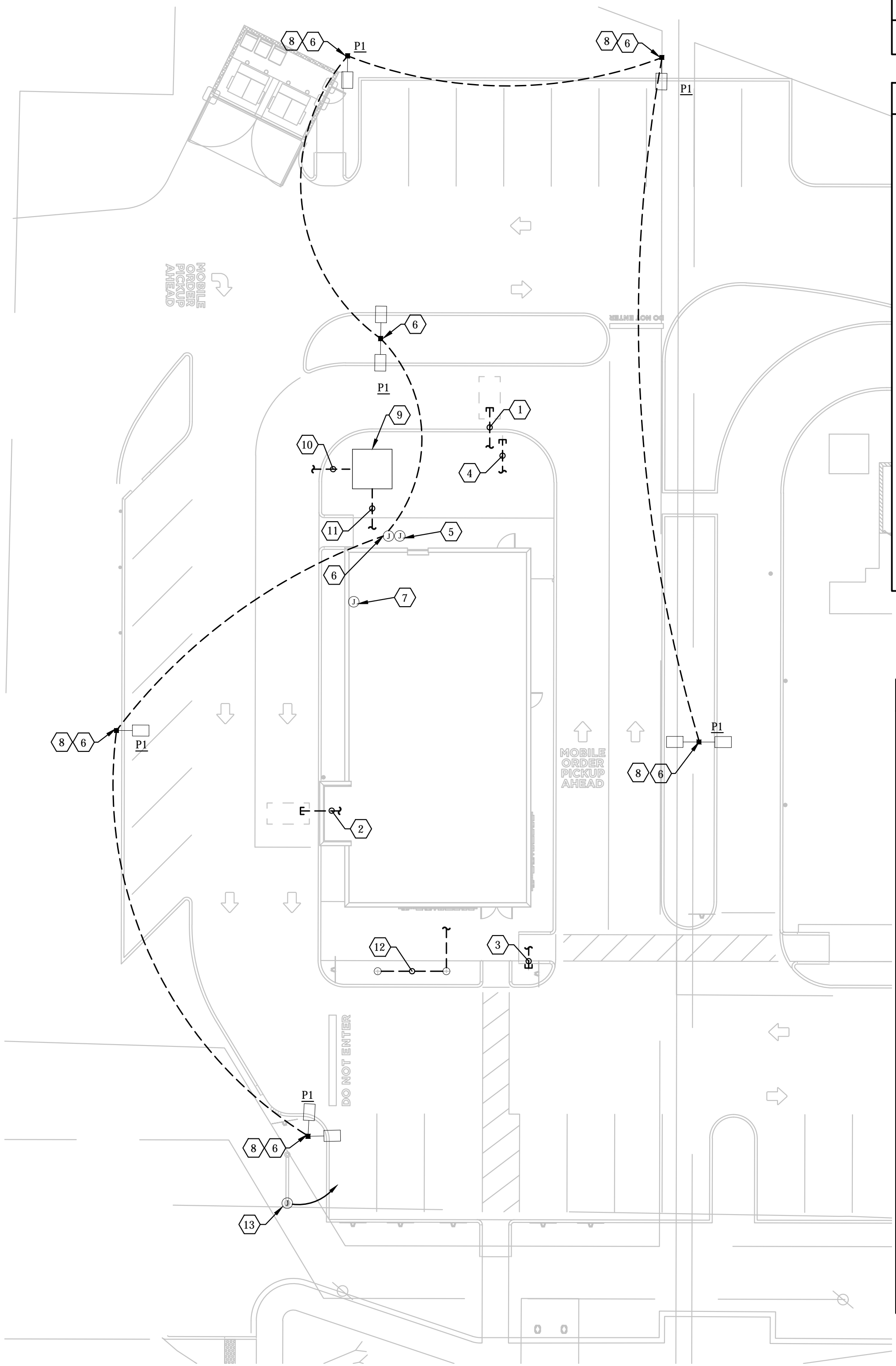
DEVICE OR CONDUIT	CONNECTION OR CONDUCTORS
CMG	CMG
LL	CMG
LL	CMG
LL	CMG
LL	LL
LL	CMG
LL	CMG
LL	CMG

GENERAL NOTES

- WORK AND MATERIALS SHALL BE COMPLIANT WITH THE NEC AND REQUIREMENTS OF THE AHI.
- CONDUCTORS AND CONNECTIONS BELOW GRADE, EVEN WHERE WITHIN CONDUITS OR ENCLOSURES, SHALL BE SUITABLE FOR WET LOCATIONS.
- PROVIDE PULL STRING IN EMPTY CONDUITS.
- SEAL ENDS OF CONDUITS STUBBED UP ABOVE GRADE TO PROTECT FROM THE ELEMENTS.



2 SITE CONDUIT DETAIL
1/16" = 1'-0"



1 SITE PLAN - ELECTRICAL
1/16" = 1'-0"

DOUGLAS A SMELKER, PE
CONSULTING ENGINEER
589 Nationwide Blvd Suite B
Columbus Ohio 43215



COPYRIGHT 2021
ALL DRAWINGS AND SPECIFICATIONS SHALL REMAIN THE PROPERTY OF RED ARCHITECTURE + PLANNING LLC AND MAY NOT BE USED, DUPLICATED OR ALTERED WITHOUT THE WRITTEN CONSENT OF THE ARCHITECT



COLUMBIA DEVELOPMENT
1845 ST. JULIAN PLACE
COLUMBIA, SC 29204
TELEPHONE: 803.744.5900
INTERNET:
WWW.COLUMBIADVELOPMENT.COM

STORE NO.: 0000

CMG FAYETTEVILLE SHELL
RAEFORD RD.
FAYETTEVILLE, NC 28303

Issue Record:	
01.19.2021	TENANT/OWNER REVIEW
02.22.2021	PERMIT SET

Revisions:

Drawn: SS
Checked: RS

Project No.
COD001

Contents:
SITE PLAN
ELECTRICAL SHELL

ES100