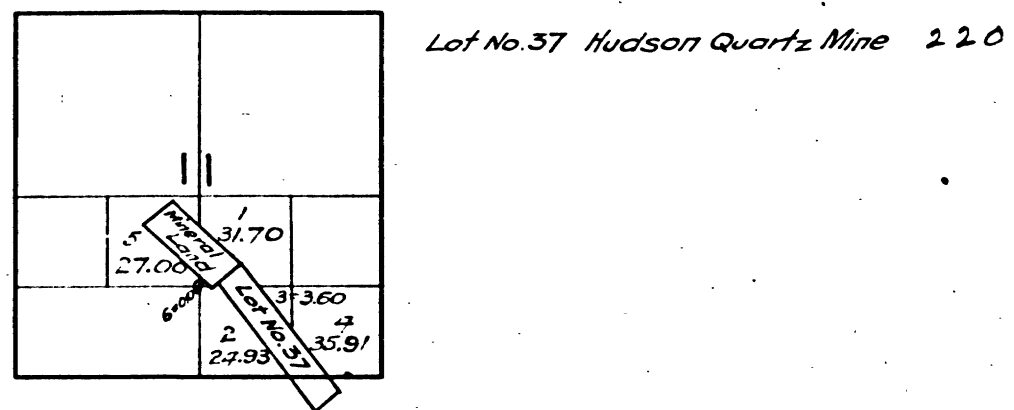
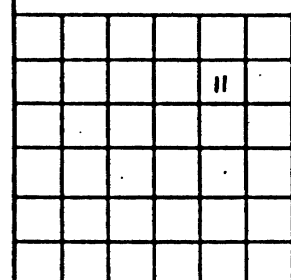


*Segregation of agricultural from Mineral Land in the
SW 1/4 and SE 1/4 of section 11, is made from field notes of
survey made by W.S. Coulter in June 1907.*



*Segregation of agricultural from Mineral Land in the
SW 1/4 and SE 1/4 of section 11, is made from field notes of
survey made by W.S. Coulter in June 1907.*



T.4N. R.11E. M.D.M.

The above diagram of section 11, Township No. 4 North, Range No. 11
East, Mount Diablo Meridian, California, is correctly constructed
in accordance with surveys on file in this office
U.S. Surveyor General's Office
San Francisco, California.
May 12, 1908

W.S. Graham
U.S. Surveyor General for California.

The above diagram of section 11, Township No. 4 North, Range No. 11
East, Mount Diablo Meridian, California, is correctly constructed
in accordance with surveys on file in this office.
U.S. Surveyor General's Office.
San Francisco, California.
January 17, 1908.

W.S. Graham
U.S. Surveyor General for California.

CHAINS

CHAINS
10 20 40 60 80 120