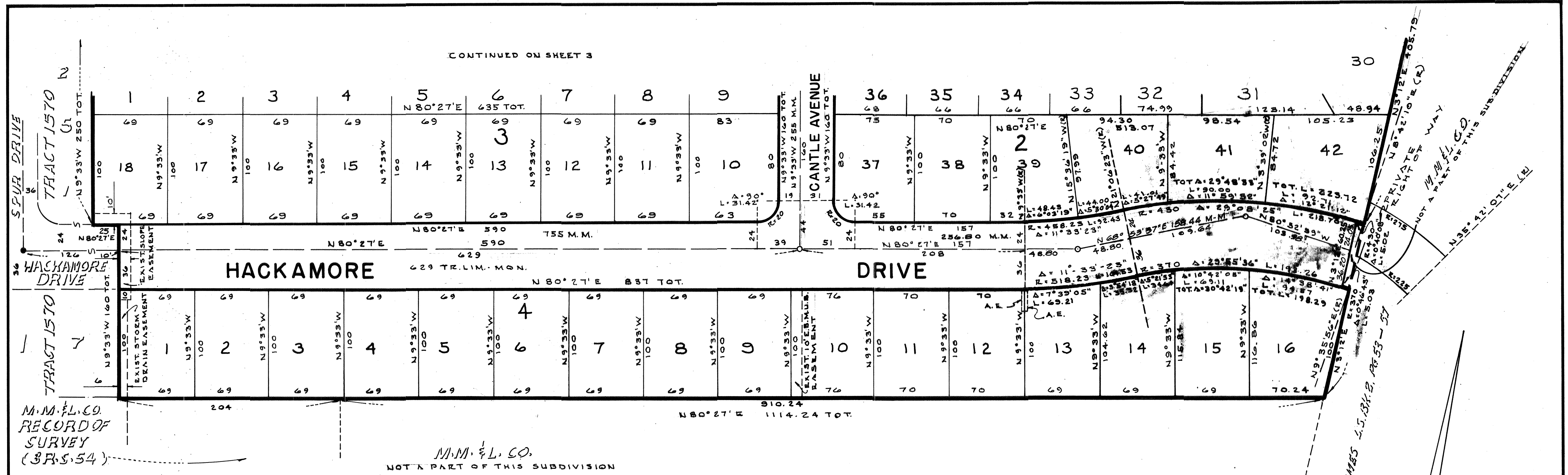


CONTINUED ON SHEET 3



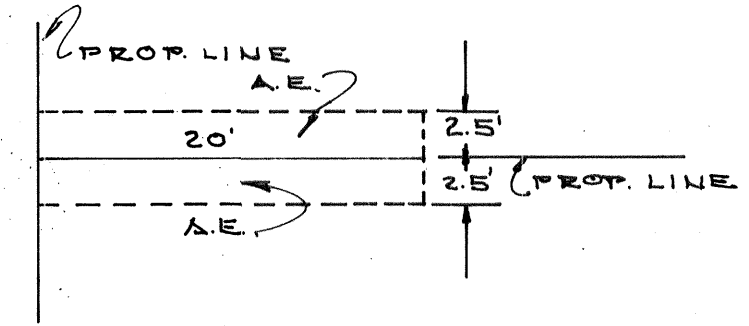
EAST BAY MUNICIPAL UTILITY DISTRICT IS OWNER OF RECORD OF EASEMENTS FOR WATER LINES OVER PORTIONS OF THE REAL PROPERTY LYING WITHIN THE LINES OF THE MAP SHOWN HEREON, WHICH EASEMENTS CANNOT RIPEN INTO A FEE, AND THE SIGNATURE OF EAST BAY MUNICIPAL UTILITY DISTRICT IS NOT REQUIRED HEREON. SAID EASEMENTS ARE OF RECORD IN THE OFFICE OF THE COUNTY RECORDER OF ALAMEDA COUNTY IN BK. 8147 OF O.R. AT P. 387 AND BK. 8546 OF O.R. AT P. 467.

**LEGEND**

- INDICATES EXISTING CONCRETE MONUMENTS
- INDICATES CONCRETE MONUMENTS TO BE SET.

**NOTES**

BUILDING SETBACK LINES TO BE AS REQUIRED BY THE ORDINANCE CODE OF THE COUNTY OF ALAMEDA, TITLE 9, CHAPTER 2.  
A.E. ANCHOR EASEMENT  
BASIS OF BEARING: CENTERLINE OF EAST AVE. (CO. RD. NO. 7803) AS SHOWN ON PLAN & PROFILE NO. A-467, DATED SEPT. 1938.



**ANCHOR EASEMENT DETAIL**  
SCALE 1" = 10'

**TRACT 2016**  
EDEN TOWNSHIP,  
ALAMEDA COUNTY, CALIFORNIA  
IN UNINCORPORATED TERRITORY  
IN THE COUNTY OF ALAMEDA

MAR. 1959  
BRYAN & MURPHY CIVIL ENGINEERS  
BERKELEY CALIFORNIA  
1 INCH = 60 FEET