

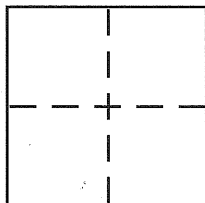
BK 43 Pg 45
Document Number CR 4784

CORNER RECORD

City of BERKELEY

County of ALAMEDA, California

Brief Legal Description CITY MONUMENT B0627



CORNER TYPE

Government Corner ☐ Control ☒
Meander ☐ Property ☐
Rancho ☐ Other ☐
Date of Survey 12-15-2011

COORDINATES (Optional)

N. _____
E. _____
Zone _____ NAD27 ☐ NAD83 ☐
NAD83 Epoch _____
Elev. _____
Vert. Datum: NGVD29 ☐ NAVD88 ☐
Meas. Units: Metric ☐ Imperial ☐

Corner - Left as found ☒ Found and tagged ☐ Established ☐ Reestablished ☐ Rebuilt ☐

Identification and type of corner found: Evidence used to identify or procedure used to establish or reestablish the corner:

SEE OTHER SIDE

In compliance with Section 8771 of the Professional Land Surveyors' Act, this corner record is being filed to ESTABLISH the position of an existing monument PRIOR to street or highway construction.

A description of the physical condition of the monument as found and as set or reset:

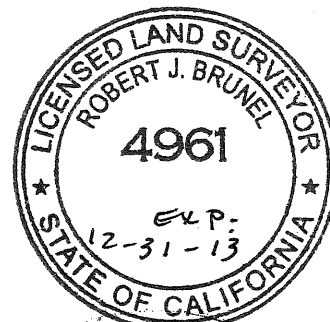
SEE OTHER SIDE

SURVEYOR'S STATEMENT

This Corner Record was prepared by me or under my direction in conformance with

the Land Surveyor's Act on JANUARY 10, 2012

Signed Robert J. Brunel P.L.S. or R.C.E. No. 4961



COUNTY SURVEYOR'S STATEMENT

This Corner Record was received

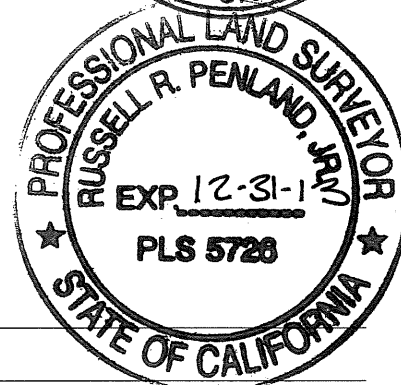
1-16-2012

and examined and filed

2-21-2012

Signed Russell R. Penland P.L.S. or R.C.E. No. 5726

Title COUNTY SURVEYOR



County Surveyor's Comment

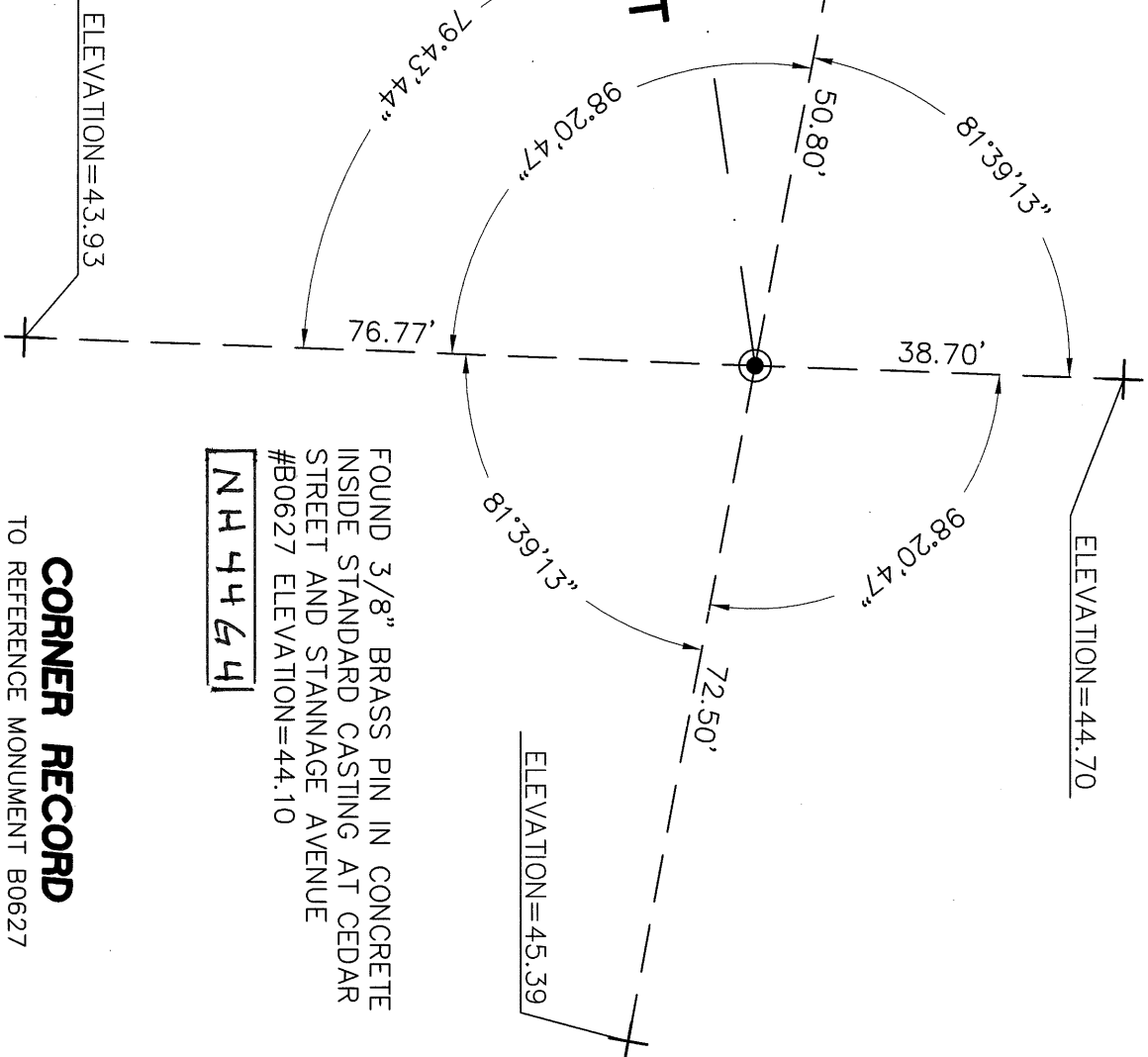


FOUND 3/8" BRASS PIN IN CONCRETE
INSIDE STANDARD CASTING AT CEDAR
STREET AND KAINS AVENUE #B0626
ELEVATION=39.98

CEDAR STREET

- LEGEND**
- FOUND CITY MONUMENT AS NOTED
 - + CUT CROSS IN CONCRETE CURB

AA##A# ALA. CO. MON. ID



FOUND 3/8" BRASS PIN IN CONCRETE
INSIDE STANDARD CASTING AT CEDAR
STREET AND STANNAGE AVENUE
#B0627 ELEVATION=44.10

NH4464

CORNER RECORD

TO REFERENCE MONUMENT B0627
AT CEDAR STREET AND STANNAGE AVENUE
CITY OF BERKELEY, COUNTY OF ALAMEDA, CALIFORNIA

DECEMBER 15, 2011

SCALE: 1"=20'