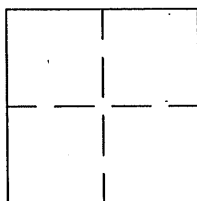


CORNER RECORD

BK 55 PG 99
CR - 1692

APN No. _____ (Optional) Document Number _____
UNINCORPORATED County of ALAMEDA, California
Brief Legal Description NEW MONUMENT ON SATURN DRIVE AT STATION 12+38.05EC.



CORNER TYPE

Government Corner ☐ Control ☐
Meander ☐ Property ☐
Rancho ☐ Other ☒
Date of Survey APRIL 2002

COORDINATES (Optional)

N. _____
E. _____
Zone _____ Datum _____
Elev. _____

Corner - Left as found ☐ Found and tagged ☐ Established ☐ Reestablished ☒ Rebuilt ☐

In compliance with Section 8771 of the Professional Land Surveyors' Act, this corner record is being filed to ESTABLISH _____ / REESTABLISH X the position of an existing monument PRIOR _____ / SUBSEQUENT X to street or highway reconstruction. (Use this portion only when applicable.)

Identification and type of corner found: Evidence used to identify or procedure used to establish or reestablish the corner: THE MONUMENTS DESCRIBED BELOW WAS SET USING REFERENCE POINTS, SCRIBED "X"S ON CONCRETE WALK AND CARPORT. SEE DRAWING NEXT PAGE.

A description of the physical condition of the monument as found and as set or reset: AN ALAMEDA COUNTY BRONZE DISK WITH NIPPLE STAMPED "12+38EC 02" IN A MONUMENT WELL WAS AT STATION 12+38.05EC. THIS MONUMENT REPLACES AN EXISTING RAILROAD SPIKE.

SURVEYOR'S STATEMENT

This Corner Record was prepared by me or under my direction in conformance with

the Land Surveyors' Act on May 14, 2002

Signed Gregory Donald Hollfelder L.S. or R.C.E. Number 5918



COUNTY SURVEYOR'S STATEMENT

This Corner Record was received 5-20-02 and examined

and filed 11-17-13

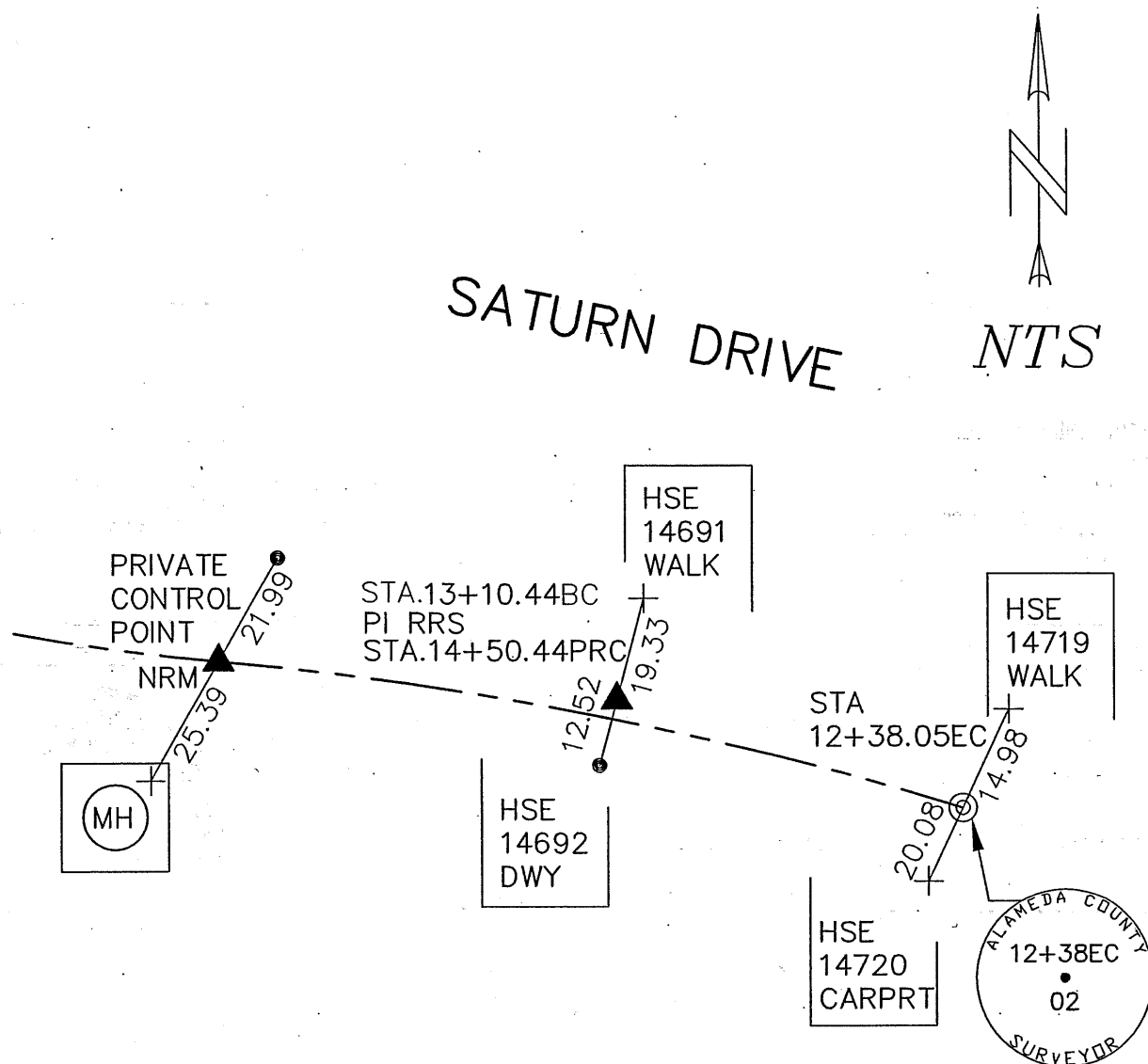
Signed Russell R. Penland, Jr. Title County Surveyor



County Surveyor's Comment _____

REFERENCE: ALAMEDA COUNTY
MAPS AND FIELD NOTES.

B-822-1
CR-1585.
LL-822-6



LEGEND:

- ⊙ = SET STANDARD MONUMENT 1' BELOW PAVEMENT.
- ▲ = FOUND RAILROAD SPIKE
- + = SET SCRIBED CROSS ON CONCRETE SLAB
- = SET CONCRETE NAIL ON AC BERM
- NRM = NON RECORD MONUMENT