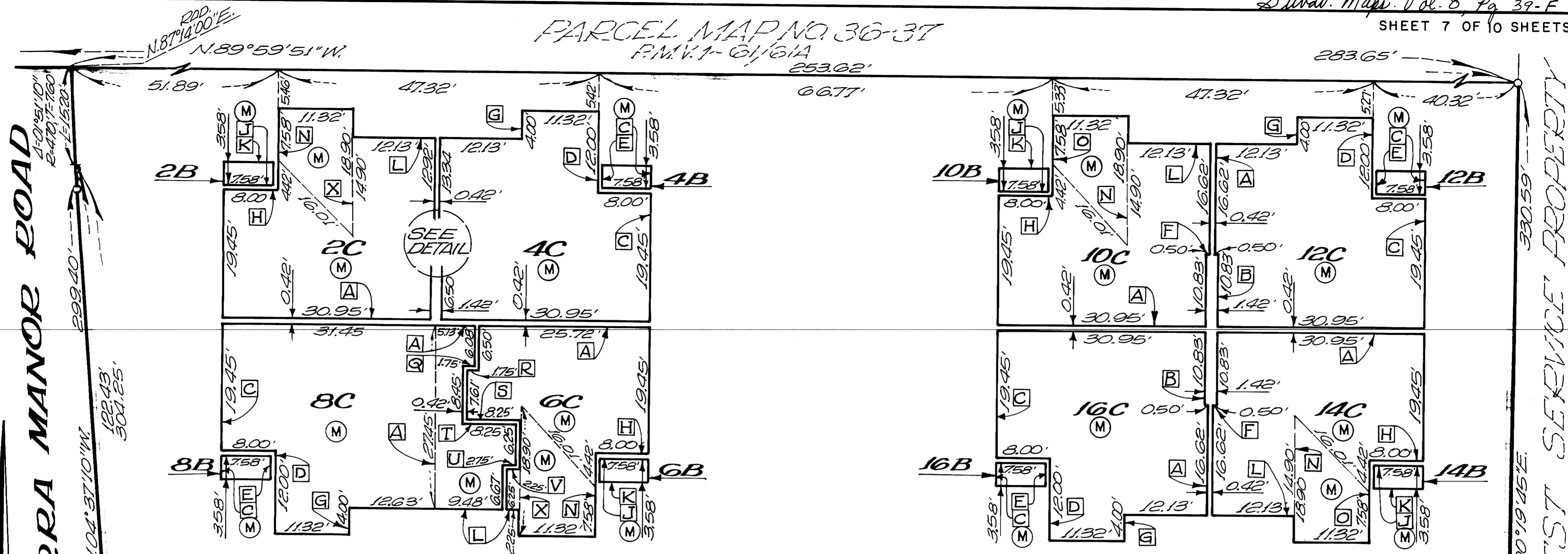


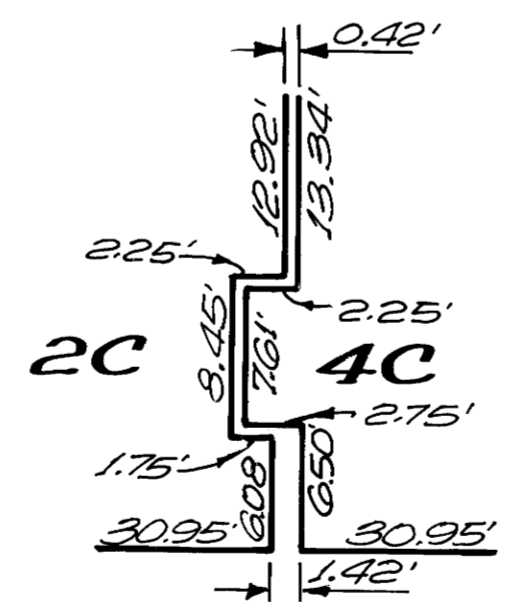
PARCEL MAP NO. 36-37  
P.M.V. 1-61/61A



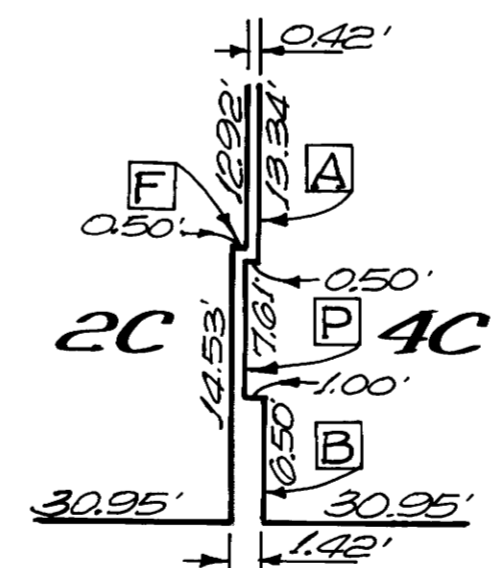
PORTION OF LOT A  
SEE SHEET NO. 8

VERTICAL LIMITS OF AIR SPACES 2C, 4C, 6C & 8C:

L.B. = 7846.86	
U.B. [A] = 7868.09	U.B. [P] = 7868.30
[B] = 7867.88	[Q] = 7865.56
[C] = 7858.31	[R] = 7865.38
[D] = 7862.03	[S] = 7862.21
[E] = 7863.03	[T] = 7862.03
[F] = 7859.98	[U] = 7859.43
[G] = 7856.64	[V] = 7859.25
[H] = 7858.14	[W] = 7862.86



FROM L.B. 7846.86  
TO U.B. 7854.98



FROM L.B. 7855.87  
TO U.B. AS SHOWN

~DETAIL~

~AIR SPACE LEGEND~

L.B. = ELEVATION OF LOWER VERTICAL BOUNDARY.  
U.B. = ELEVATION OF UPPER VERTICAL BOUNDARY.  
[M] = INCLINED PLANE AREAS, SEE SH. 3, NOTE NO. 7.  
[ ] = U.B. ELEVATIONS AT INCLINED PLANE AREAS.

VERTICAL LIMITS OF AIR SPACES 10C, 12C, 14C & 16C:

L.B. = 7851.13	U.B. [G] = 7867.30
U.B. [A] = 7872.36	[H] = 7864.25
[B] = 7872.15	[I] = 7860.91
[D] = 7862.58	[J] = 7867.13
[F] = 7866.30	[K] = 7862.41

VERTICAL LIMITS OF AIR SPACES 10B, 12B, 14B & 16B:

L.B. = SEE SHEET 3, NOTE NO. 6	
U.B. [C] = 7859.25	
[E] = 7862.41	
[F] = 7864.07	
[K] = 7862.58	

UPPER UNITS  
TRACT NO. 36-80  
FOREST MEADOWS  
MONO COUNTY, CALIFORNIA

BEING A SUBDIVISION OF LOTS 8, 9, 10 & 11 OF SHERWIN MEADOWS PARK SUBDIVISION, M.B. 5-127/127A AND A PORTION OF THE N 1/2, SE 1/4, SW 1/4, SECTION 35, T. 3S., R. 27E., M.D.M.

PLAN FOR CONDOMINIUM PURPOSES

SCALE: 1" = 10'