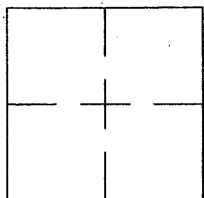


CORNER RECORD

Document Number BK 32 Pg 71
CR 3460

City of BERKELEY County of ALAMEDA, California
Brief Legal Description CITY OF BERKELEY MONUMENT "B0852"



CORNER TYPE

Government Corner ☐ Control ☒
Meander ☐ Property ☐
Rancho ☐ Other ☐
Date of Survey AUGUST 4, 2008

COORDINATES (Optional)

N. _____
E. _____
Zone NAD27 ☐ NAD83 ☐
NAD83 EPOCH _____
Elev. _____
VERT. DATUM: NGVD29 ☐ NADV88 ☐ BERKELEY ☐
MEAS. UNITS: METRIC ☐ U.S. SURVEY FEET ☐

Corner - Left as found ☒ Found and tagged ☐ Established ☐ Reestablished ☐ Rebuilt ☐

Identification and type of corner found: Evidence used to identify or procedure used to establish or reestablish the corner:
MONUMENT REFERENCE OF CITY OF BERKELEY MONUMENT "B0852" AT THE INTERSECTION OF
66TH STREET AND SACRAMENTO STREET.

A description of the physical condition of the monument as found and as set or reset: FOUND EXISTING 1/4 INCH
DIAMETER BRASS PIN IN CONCRETE SET WITHIN A STANDARD CITY OF BERKELEY WELL MONUMENT
CASING.

SURVEYOR'S STATEMENT

This Corner Record was prepared by me or under my direction in conformance with
the Land Surveyors' Act on AUGUST 8 20 08.

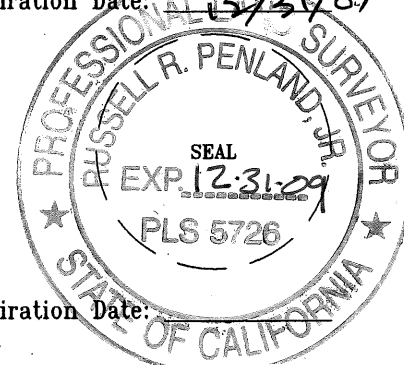
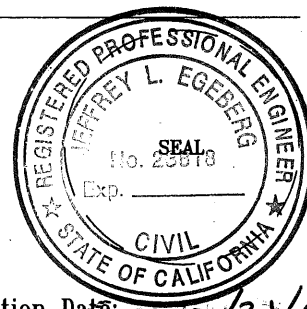
Signed [Signature] L.S. or R.C.E. Number R.C.E. 23818

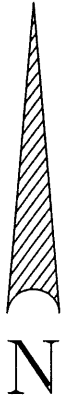
COUNTY SURVEYOR'S STATEMENT

This Corner Record was received 8-7 20 08 and examined
and filed 8-9 20 09

Signed [Signature] Title County Surveyor

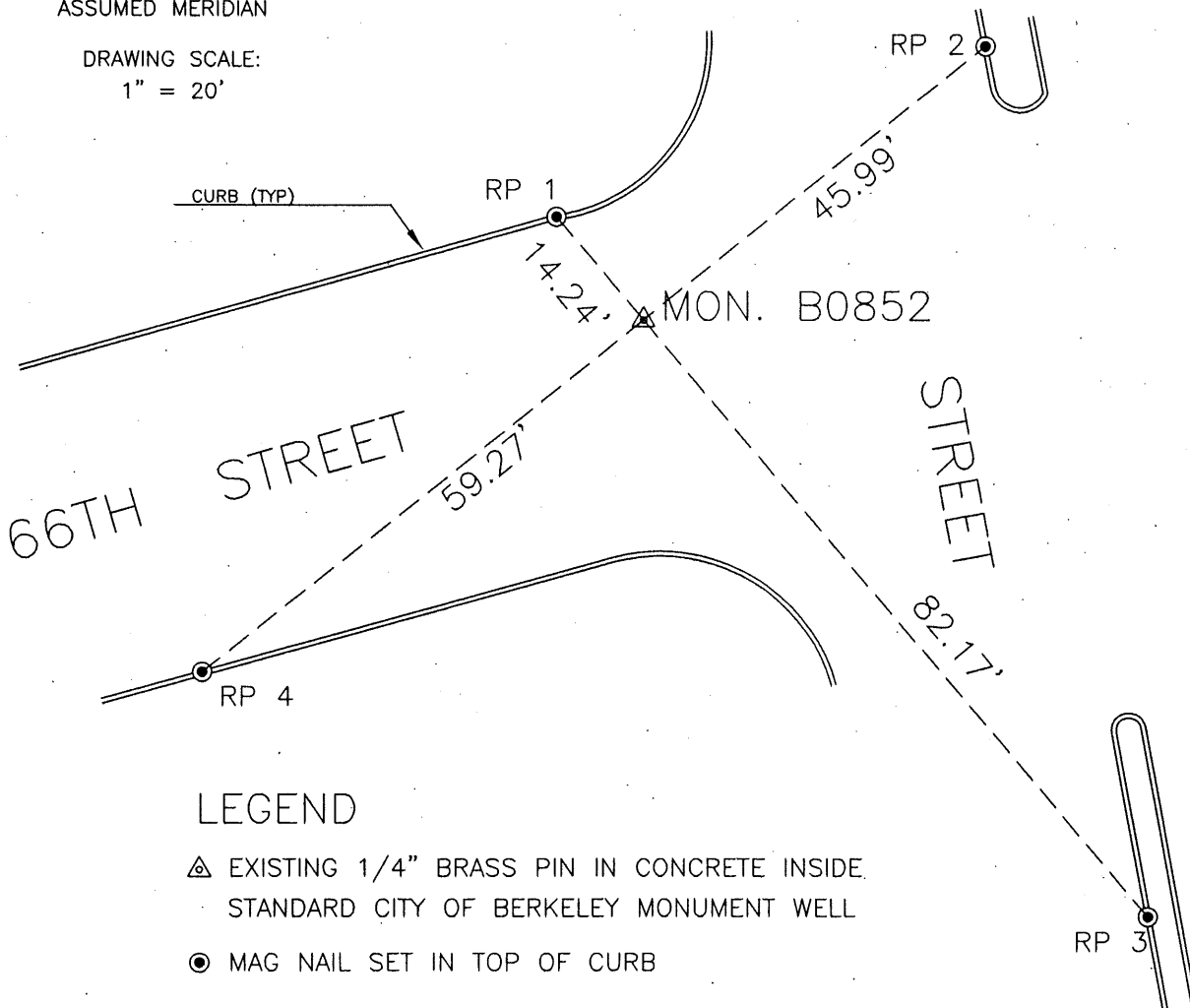
County Surveyor's Comment _____





ASSUMED MERIDIAN

DRAWING SCALE:
1" = 20'



NOTES:

- 1.) THE POSITION OF B0852 SHOWN HEREON IS THE POINT OF INTERSECTION OF LINE RP1-RP3 WITH LINE RP2-RP4.
- 2.) DISTANCES ARE IN FEET AND DECIMALS THEREOF.