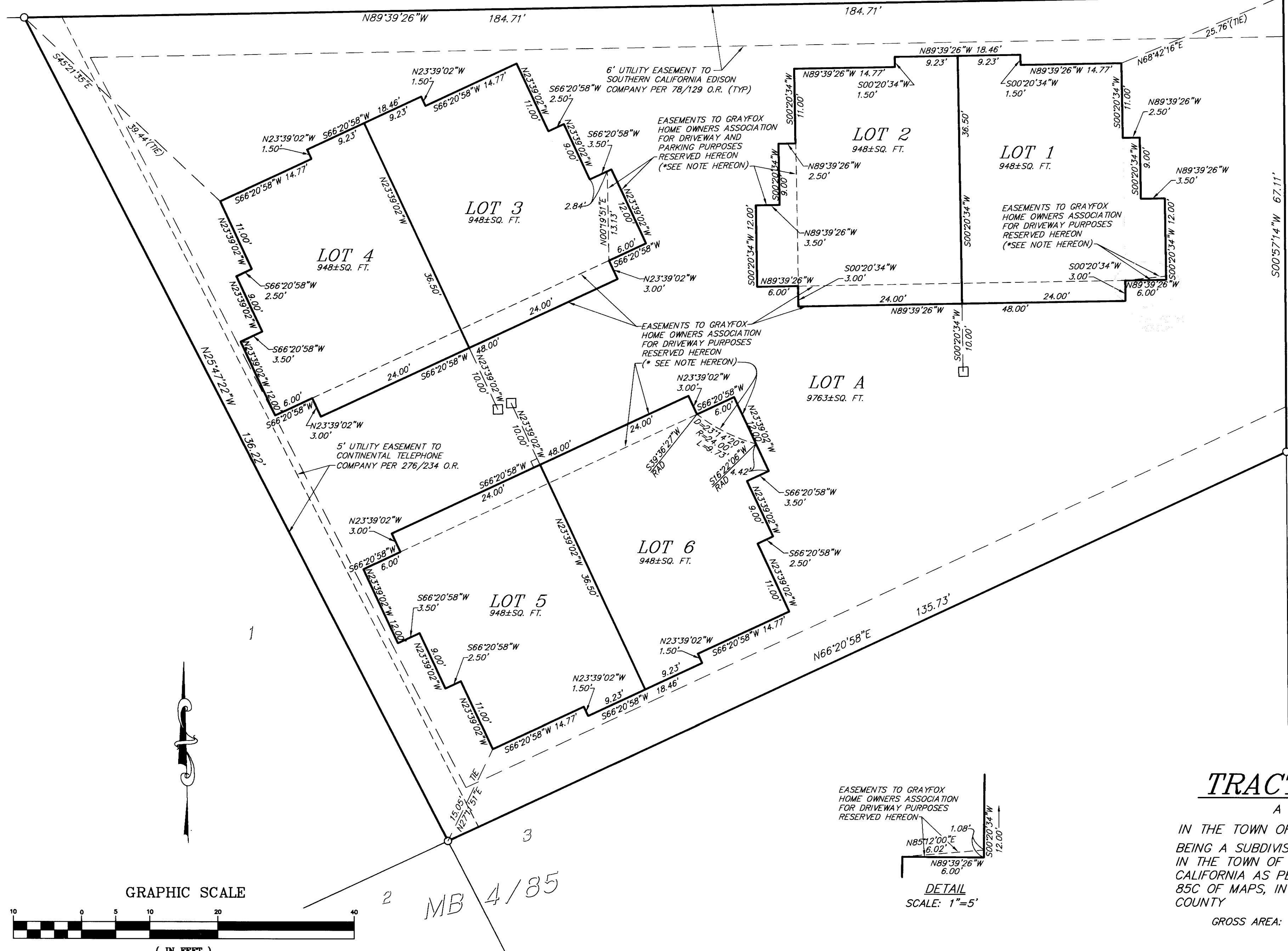


LOT 1
MB 9/59



RECORD INFORMATION

R1 - MB 4/85
R2 - RSMB 2/100
R3 - TMB 9/59

LEGEND

- SET 5/8" REBAR WITH CAP "LS 4587" AS REPLACEMENT FOR RECORD MONUMENT NOT FOUND
- FOUND RR SPIKE PER R2, REPLACED WITH BRASS DISK "LS 4587" IN WELL MONUMENT PER TOWN OF MAMMOTH LAKES STANDARDS
- SET SPIKE AND TAG STAMPED "LS4587" AS WITNESS CORNER
- FOUND MONUMENT AS NOTED

(M) MEASURED

(C) CALCULATED

(CFR) CALCULATED FROM RECORD

(P) PROPORTIONED

S.N.F. SEARCHED FOR AND NOT FOUND, NOTHING SET

B.O.B. BASIS OF BEARINGS

BASIS OF BEARINGS:

THE BASIS OF BEARINGS FOR THIS MAP IS THE CENTERLINE OF HILLSIDE DRIVE SOUTH OF THE CENTERLINE INTERSECTION WITH CANYON BOULEVARD, SHOWN HEREON AS N00°57'14"E AS PER RSMB 2/100

***EASEMENT RESERVATION NOTE**

THE EASEMENTS FOR DRIVEWAY AND PARKING PURPOSES RESERVED HEREON ARE BOUNDED BY A LOWER ELEVATION PLANE LOCATED 0.67' BELOW THE FINISHED SURFACE OF THE PAVEMENT AND AN UPPER ELEVATION PLANE LOCATED 8.0' ABOVE THE FINISHED SURFACE OF THE PAVEMENT.

GRAYFOX

TRACT MAP NO. 36-223

A PLANNED UNIT DEVELOPMENT

IN THE TOWN OF MAMMOTH LAKES, MONO COUNTY, CALIFORNIA BEING A SUBDIVISION OF LOT 4 OF MAMMOTH SLOPES UNIT NO. 2 IN THE TOWN OF MAMMOTH LAKES, COUNTY OF MONO, STATE OF CALIFORNIA AS PER MAP RECORDED IN BOOK 4, PAGES 85 THROUGH 85C OF MAPS, IN THE OFFICE OF THE COUNTY RECORDER OF SAID COUNTY

GROSS AREA: 0.35 ACRES

