

NOTATION \sqcap = DOWNSTROKE \vee = UPSTROKE $\overline{\quad}$ = FULL VALVE > = ACCENT
 \times = STRIKE MUFFLED STRINGS \circ = RELEASE PRESSURE IMMEDIATELY AFTER CHORD SOUNDS

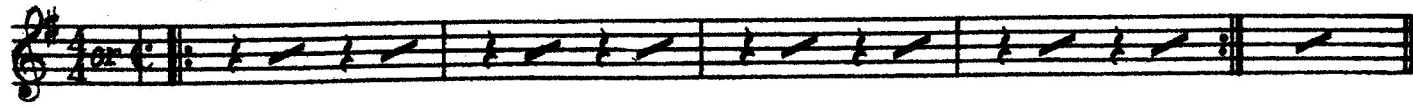
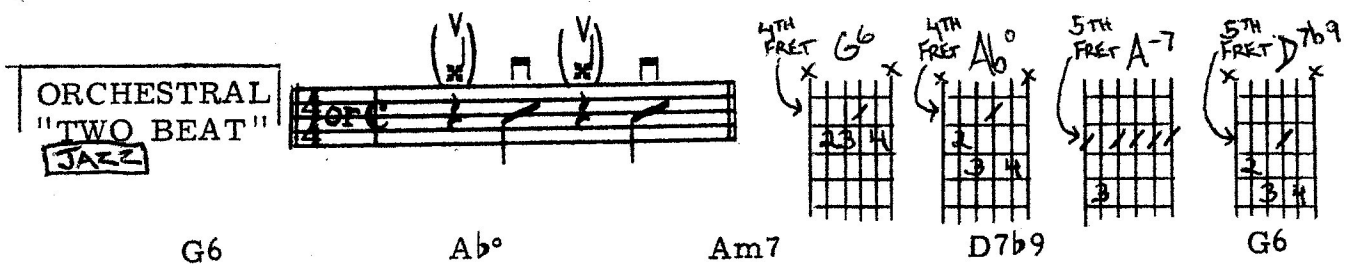
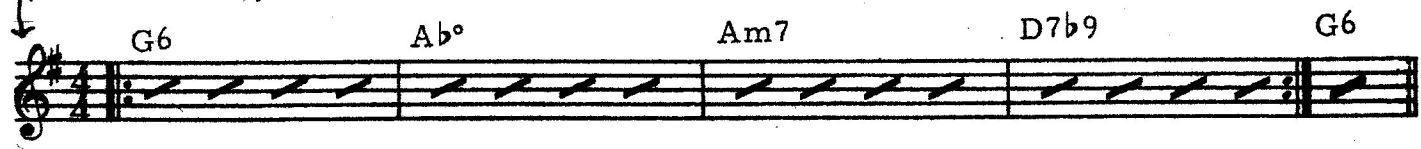
BASIC STROKE FOUR, FOUR AND TWO BEAT JAZZ

ORCHESTRAL FOUR, FOUR JAZZ

THE "CHOP" JAZZ
 (often slightly amplified)



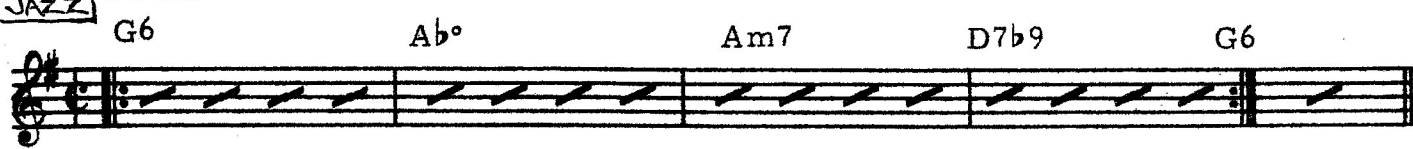
THIS IS A CHORD CHART. IT IS THE PLAYER WHO MUST DECIDE WHICH RHYTHMS TO USE.



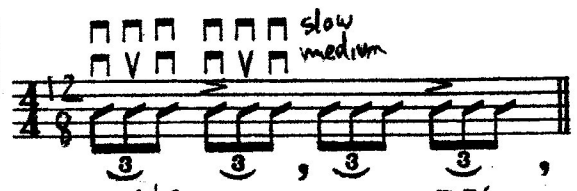
ORCHESTRAL FAST TO VERY FAST "FOUR" JAZZ



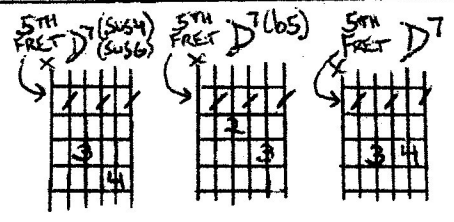
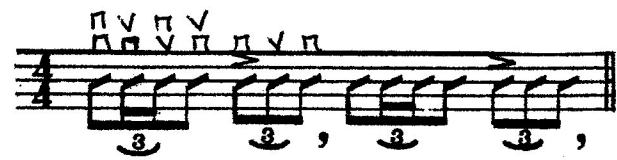
Tap the foot "in two"
 (i.e. on beats 1 and 3)



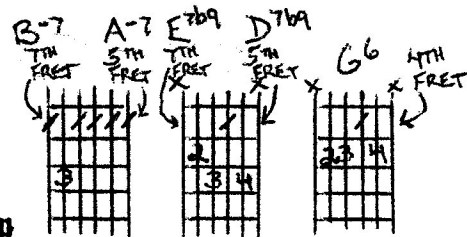
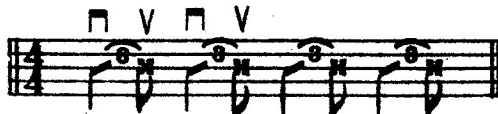
"ROCK STYLE" BALLAD
 (Mod. slow to slow 4)



VARIATION



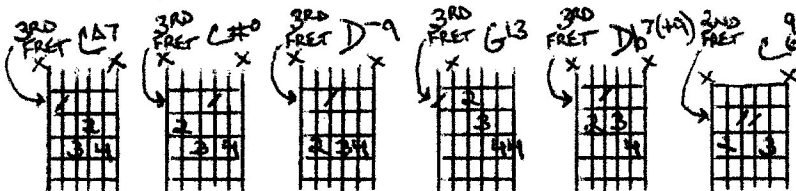
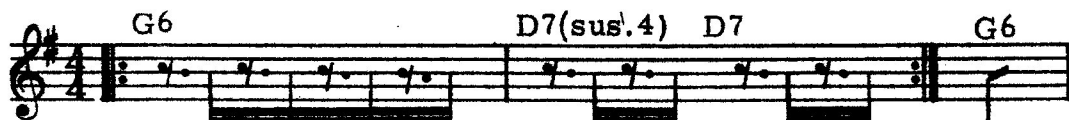
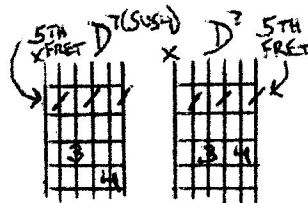
SHUFFLE RHYTHM BASIC STROKE



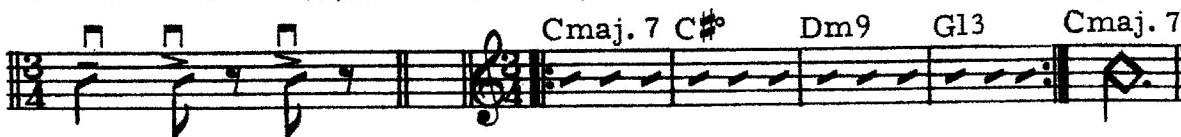
2 of 10



ORCHESTRAL SHUFFLE RHYTHM



WALTZ BASIC STROKE



ORCHESTRAL



"ROCK STYLE"



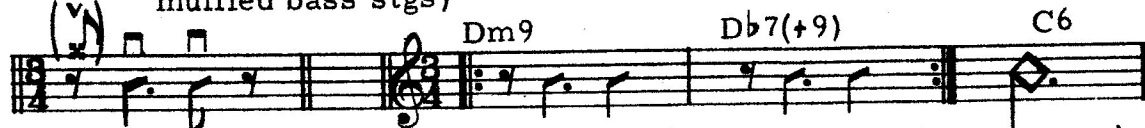
VARIATION



JAZZ WALTZ BASIC STROKE

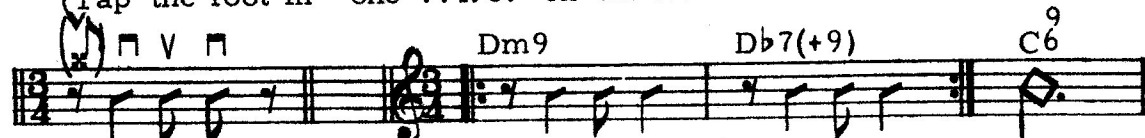


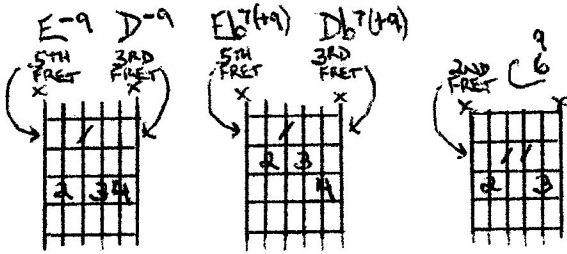
ORCHESTRAL



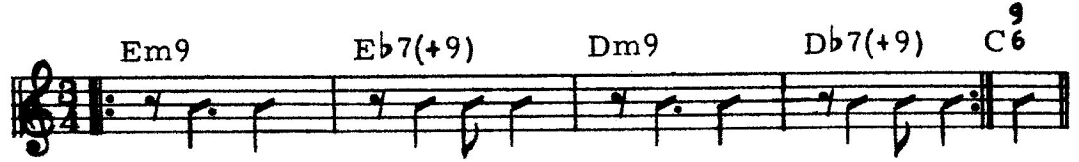
(Tap the foot in "one"... i.e. on the first beat of each measure.)

VARIATION





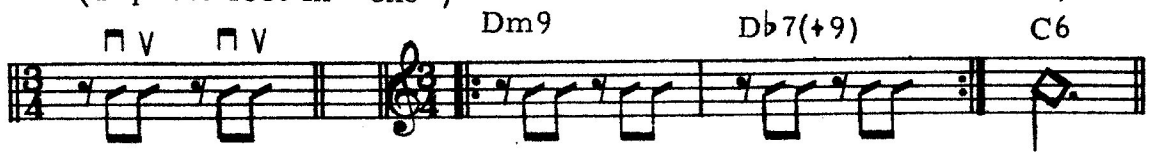
JAZZ WALTZ
COMBINATION



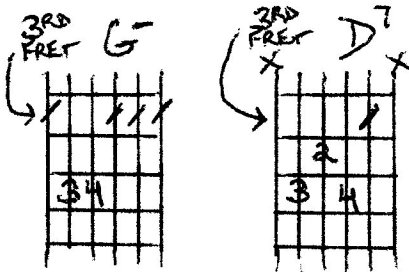
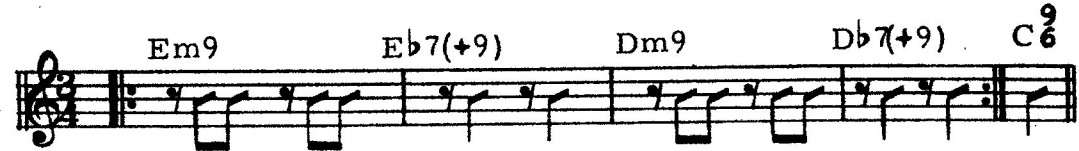
ORCHESTRAL



VARIATION



COMBINATION



CHA-CHA
BASIC AND
ORCHESTRAL

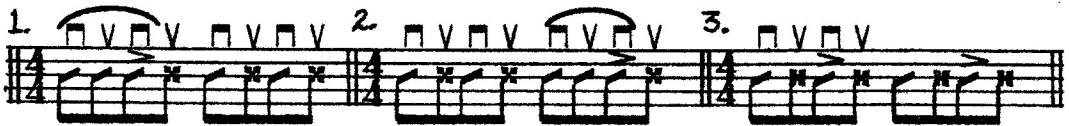


ORCHESTRAL



(Tap the foot in "two")

VARIATIONS
BASIC AND
ORCHESTRAL



BEGUINE
BASIC STROKE

VARIATIONS

ORCHESTRAL

BOSSA NOVA
BASIC STROKE

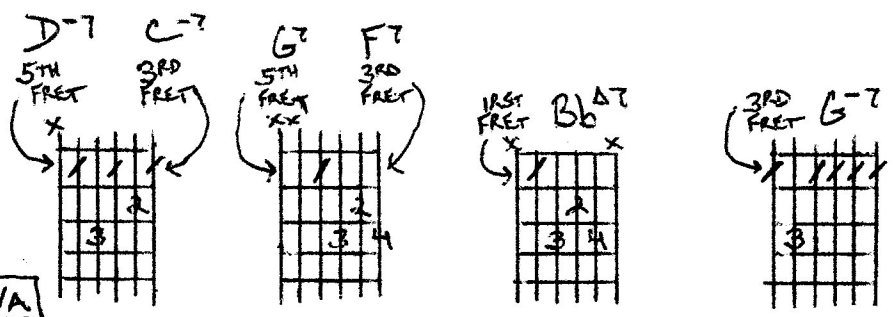
ORCHESTRAL

Tap the foot
in "two."

BASIC STROKE

TAP THE FOOT
IN "TWO"

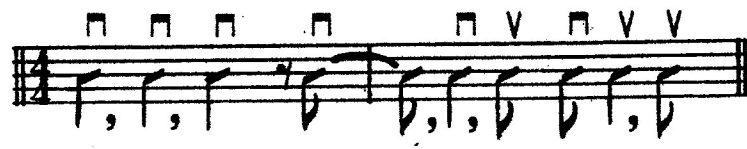
ORCHESTRAL



BOSSA NOVA

VARIATION

ORCHESTRAL



Tap the foot in "two."

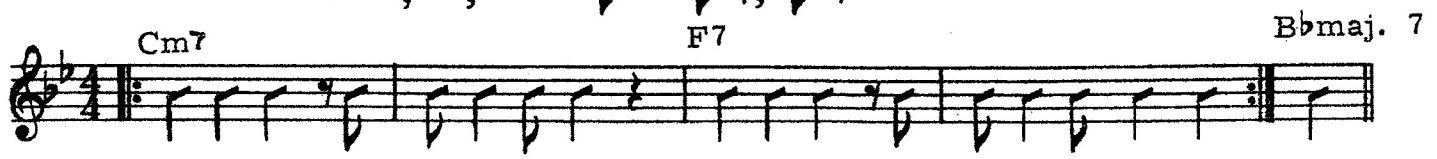


VARIATION

ORCHESTRAL

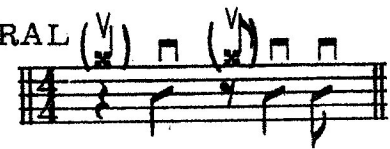
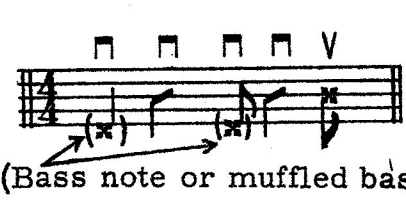


Tap the foot in "two."



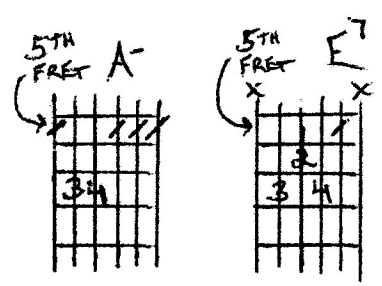
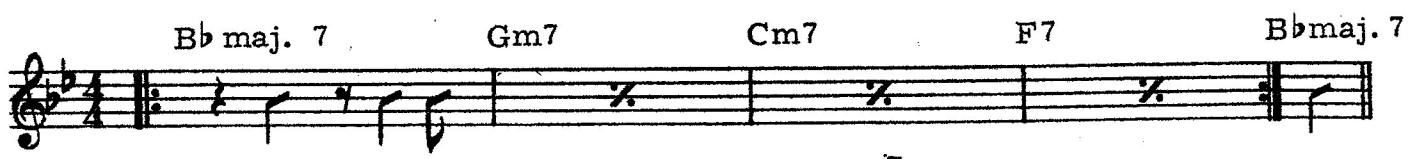
BASIC STROKE

ORCHESTRAL



Tap the foot in "two."

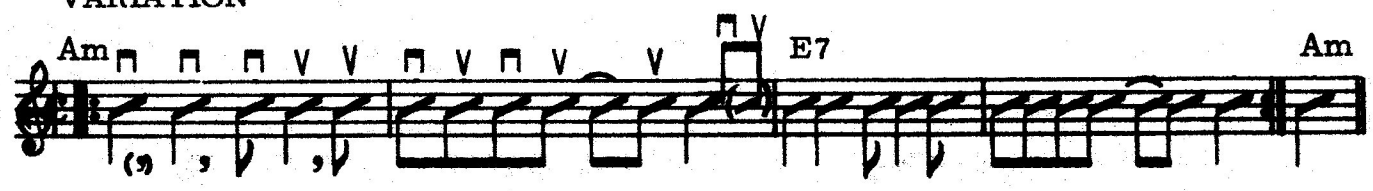
(Bass note or muffled bass stgs)



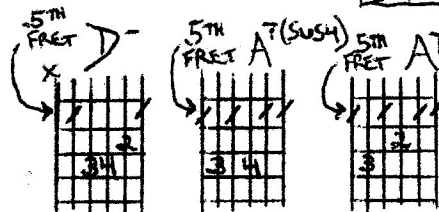
MAMBO [FAST-IN 2]



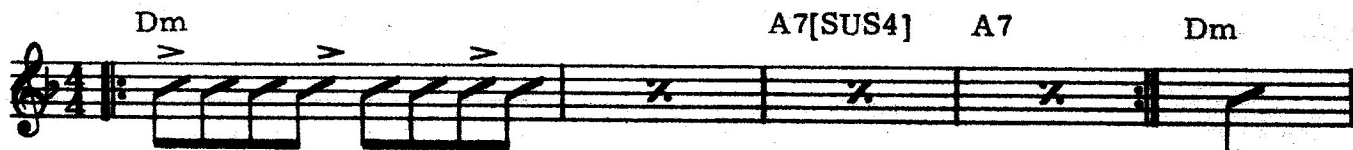
VARIATION



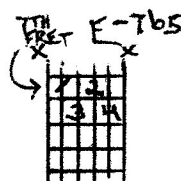
RHUMBA BASIC AND ORCHESTRAL



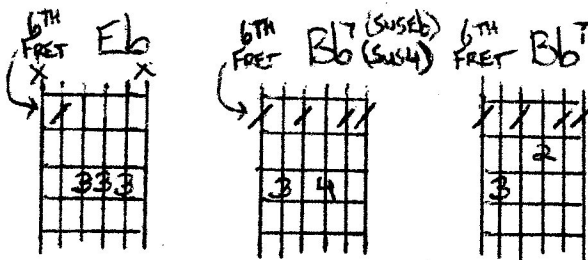
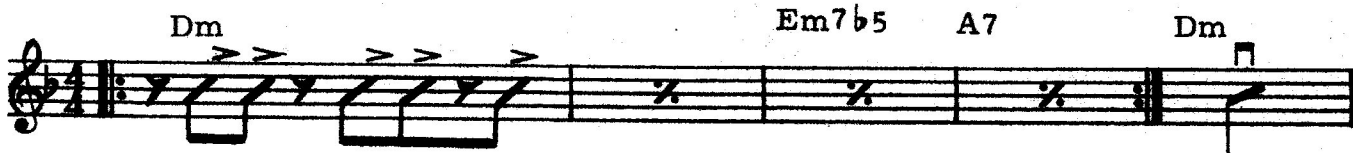
VARIATIONS



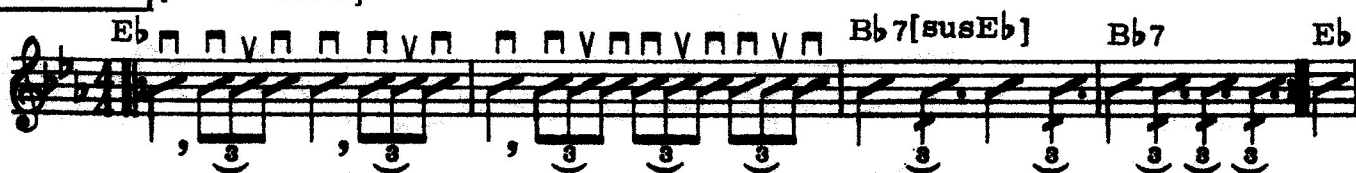
OPTIONAL ORCHESTRAL



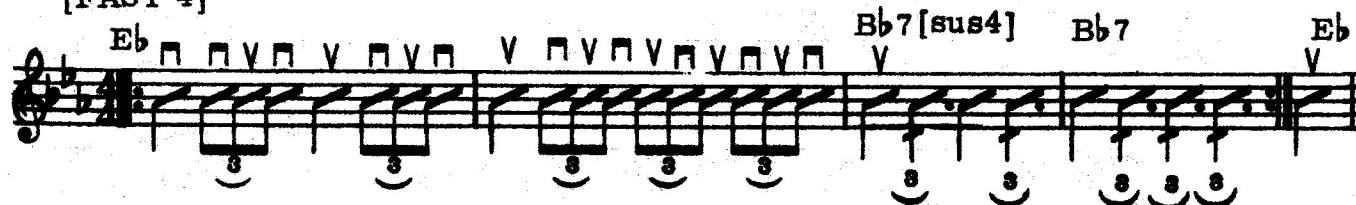
VARIATIONS

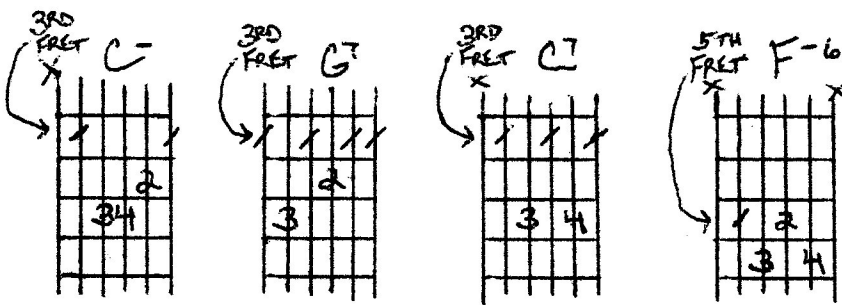


BOLERO [moderate 4]



[FAST 4]

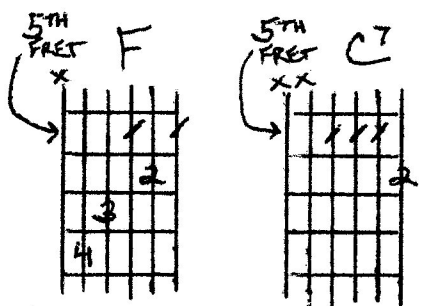
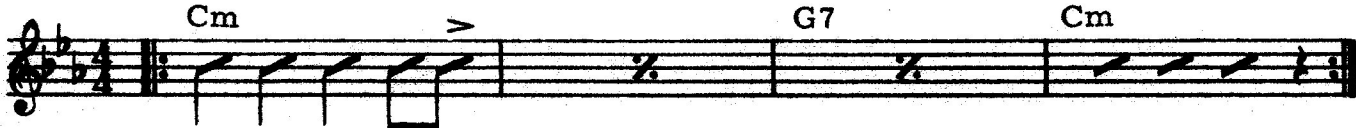




7 of 10

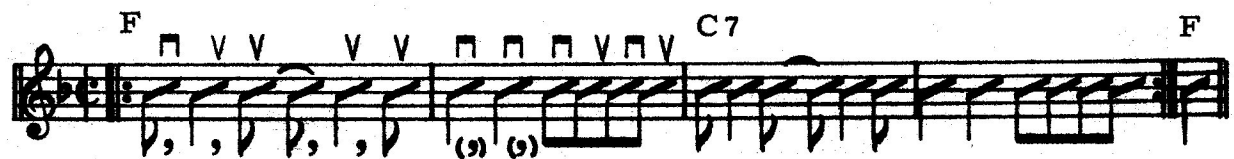
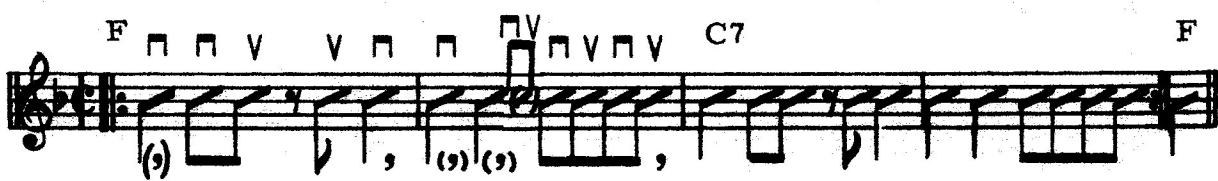
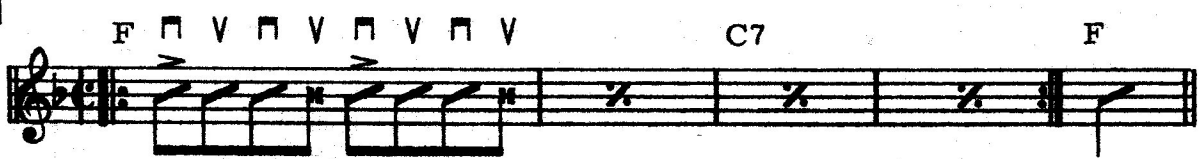
TANGO

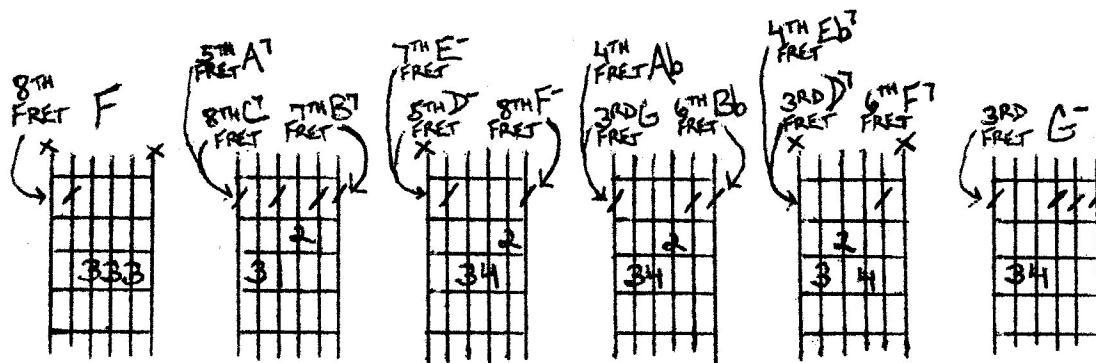
[MOD. SLOW
TO SLOW]



MERENGUE

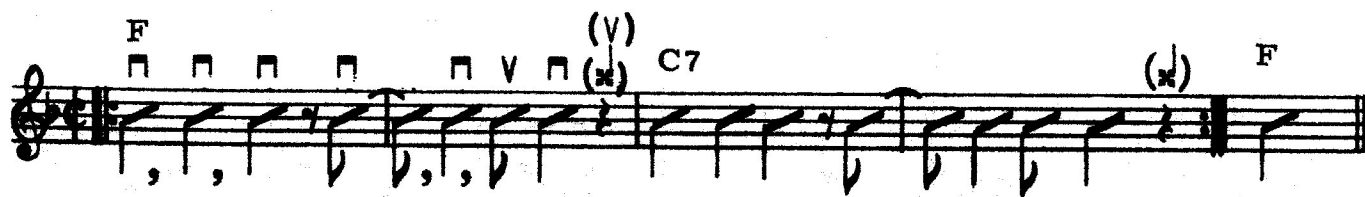
[FAST. IN 2]



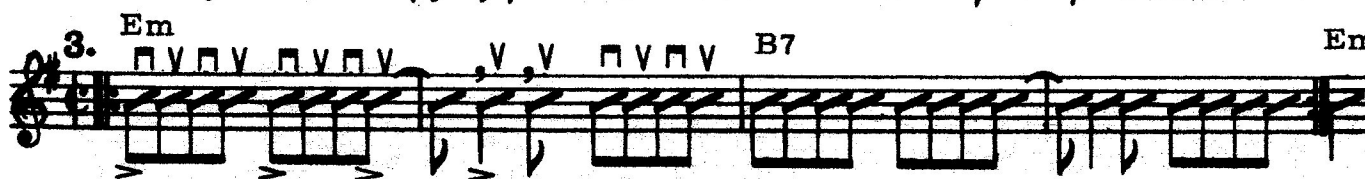
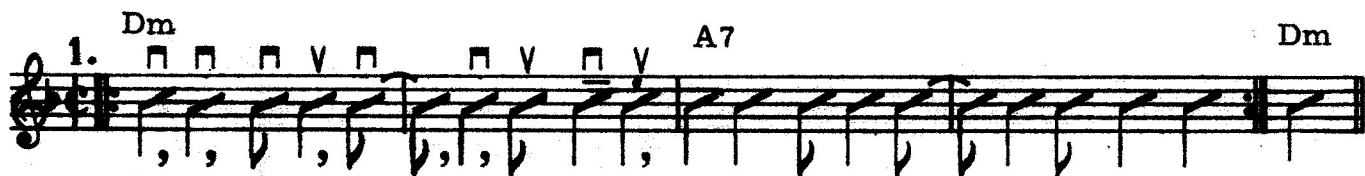


8 of 10

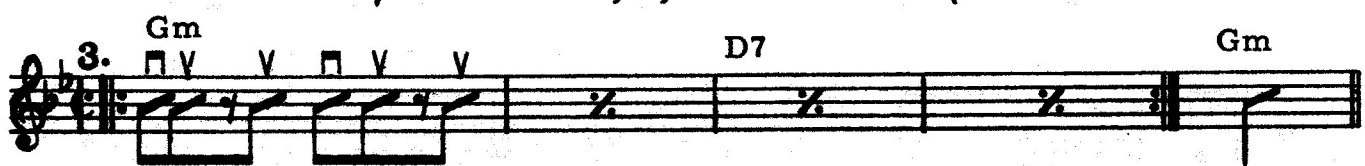
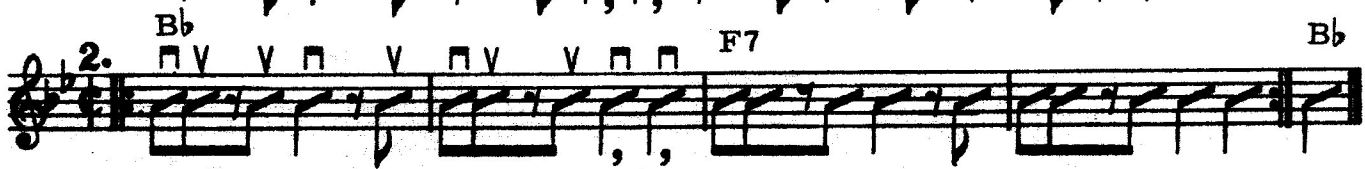
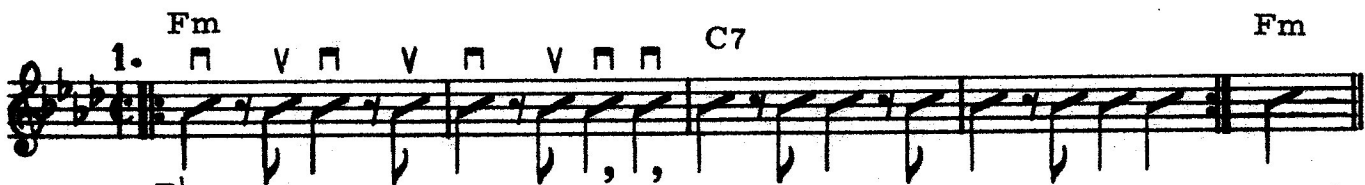
SAMBA [IN 2]

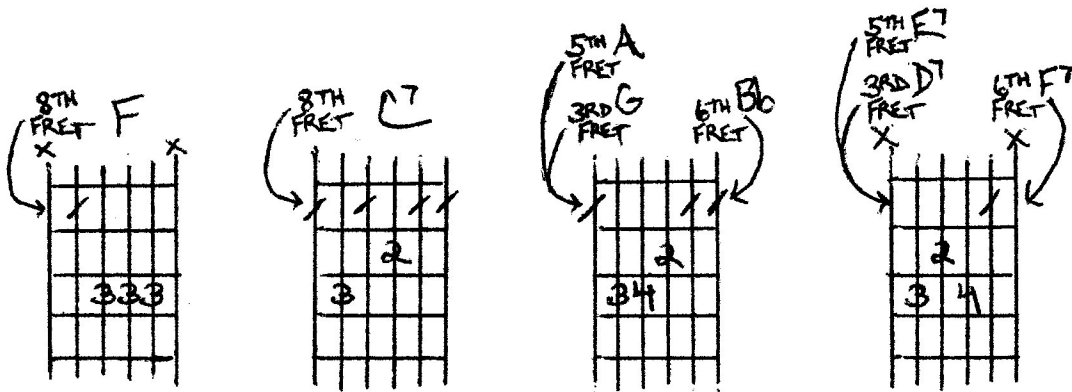


VARIATIONS



VARIATIONS





? = SHORT AND SHARP
 10 OF 10

[Mod. Fast]

PASO DOBLE

Musical notation for Paso Doble in 2/4 time, key of F major. The piece consists of two staves. The first staff starts with an F major chord (F) and a C7 dominant chord (C7). The second staff ends with an F major chord (F). The notation includes eighth and sixteenth notes with slurs and accents, and a repeat sign.

[Mod]

Musical notation in 2/4 time, key of G major. The piece consists of two staves. The first staff starts with a G major chord (G) and a D7 dominant chord (D7). The second staff ends with a G major chord (G). The notation includes eighth and sixteenth notes with slurs and accents, and a repeat sign.

[Mod. fast]

Musical notation in 2/4 time, key of A major. The piece consists of two staves. The first staff starts with an A major chord (A) and an E7 dominant chord (E7). The second staff ends with an A major chord (A). The notation includes eighth and sixteenth notes with slurs and accents, and a repeat sign.

[Mod]

Musical notation in 2/4 time, key of Bb major. The piece consists of two staves. The first staff starts with a Bb major chord (Bb) and an F7 dominant chord (F7). The second staff ends with a Bb major chord (Bb). The notation includes eighth and sixteenth notes with slurs and accents, and a repeat sign.