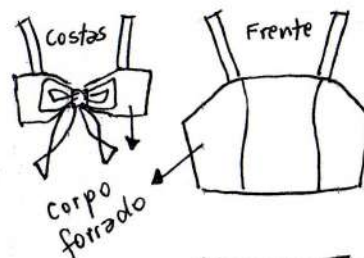


Conjunto top e saia  
reta 34



Molde sem  
margem de  
costura

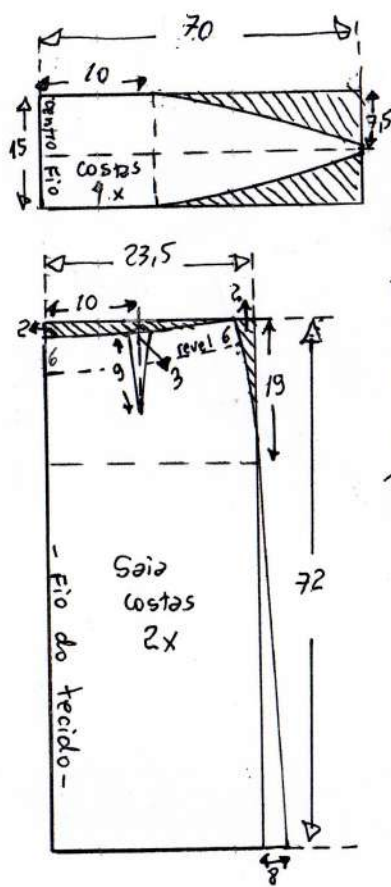
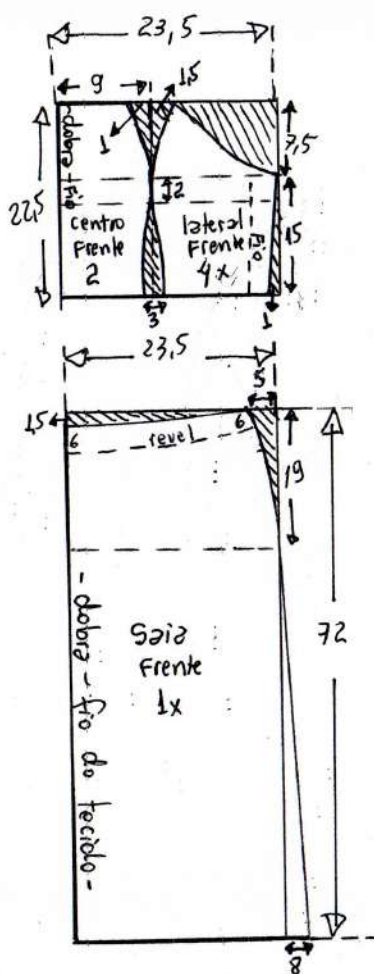
Alças = 3 cm  
por 29 cm

Tecido = 1,80 m de:  
viscose, viscolinho,  
lyocel, crepe

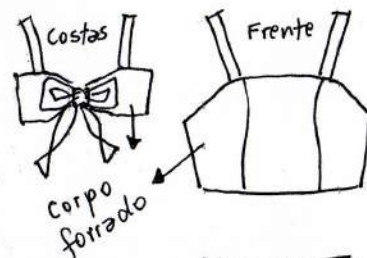
Zíper saia = 20 cm

\* Acabamento co's  
da saia com  
revel. Copie o  
revel para cortá-lo  
separado.

Entretela para o revel = 20 cm



Conjunto top e saia  
reta 36



Molde sem  
margem de  
costura

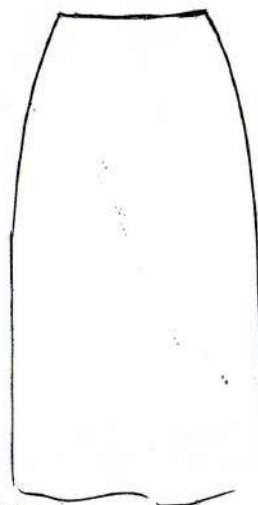
Alças = 3 cm  
por 30,5 cm

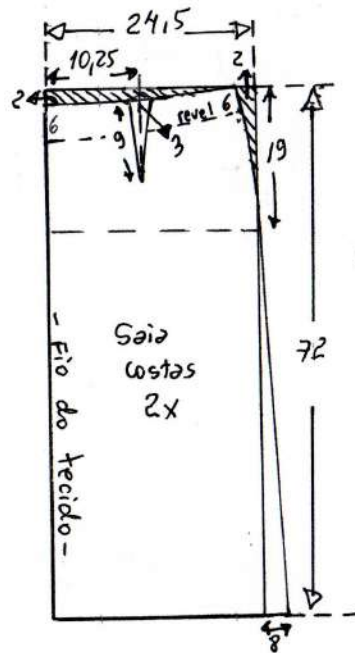
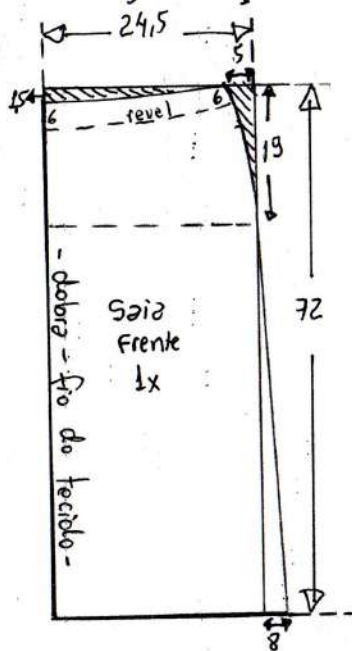
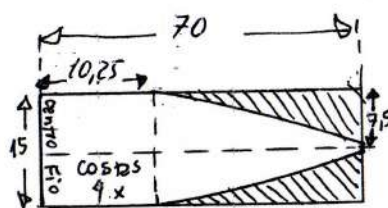
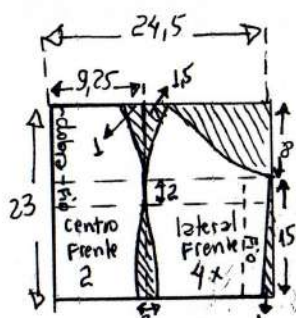
Tecido = 1,80m de:  
viscose, viscolinho,  
lyocel, crepe

Zíper saia = 20 cm

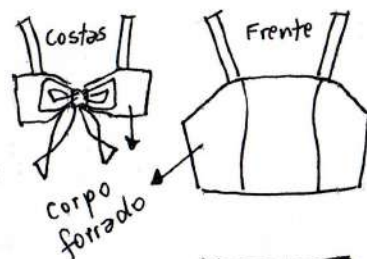
\* Acabamento as  
da saia com  
revel. Copie o  
revel para cortá-lo  
separado.

Entretela para o revel = 20 cm





Conjunto top e saia  
reta 38



Molde sem  
margem de  
costura

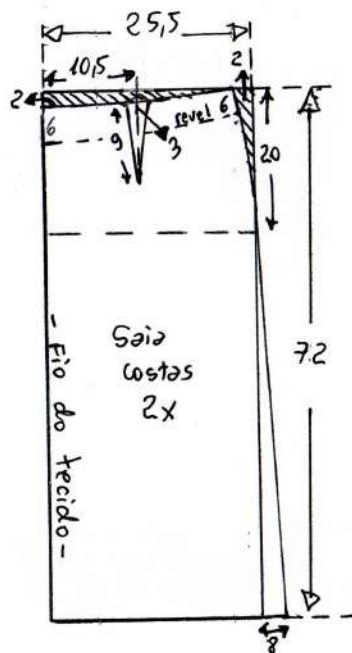
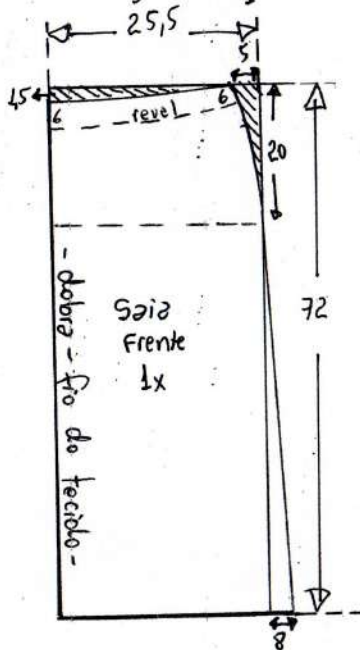
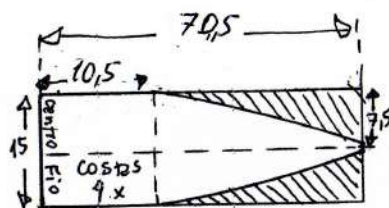
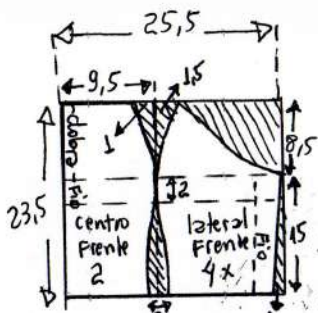
Alças = 3 cm  
por 32 cm

Tecido = 1,80 m de:  
viscose, viscolinho,  
lyocel, crepe

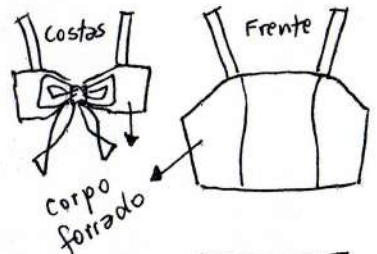
Zíper saia = 20 cm

\* Acabamento cas  
da saia com  
revel. Copie o  
revel para cortá-lo  
separado.

Entretela para o revel = 20 cm



Conjunto top e saia  
reta 40



Molde sem  
margem de  
costura

Alças = 3 cm  
por 33,5 cm

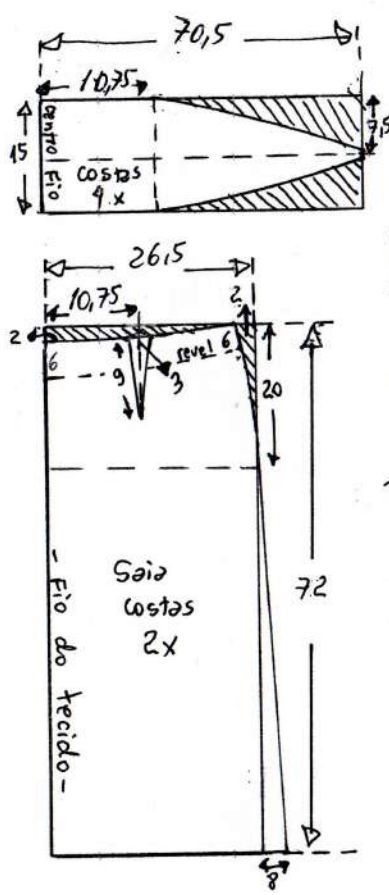
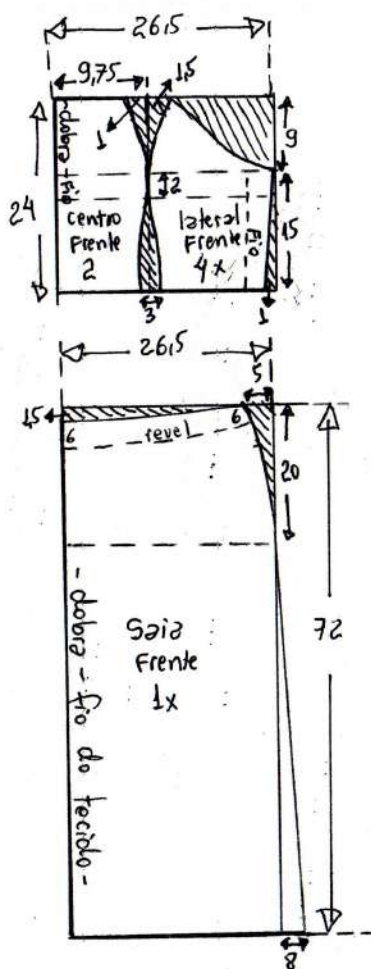
Tecido = 1,80 m de  
viscose, viscolinho,  
lyocel, crepe

Zíper saia = 20 cm

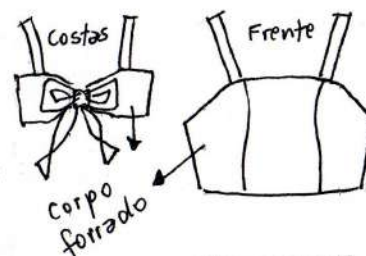
\* Acabamento cas  
da saia com  
revel. Copie o  
revel para cortá-lo  
separado.

Entretela para o revel = 20 cm





Conjunto top e saia  
reta 42



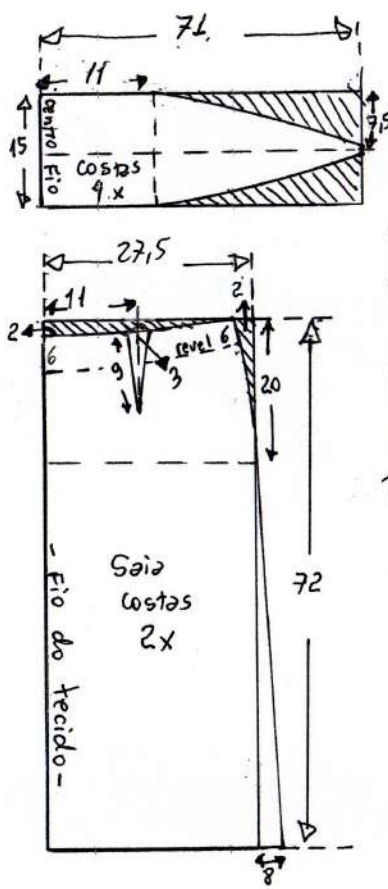
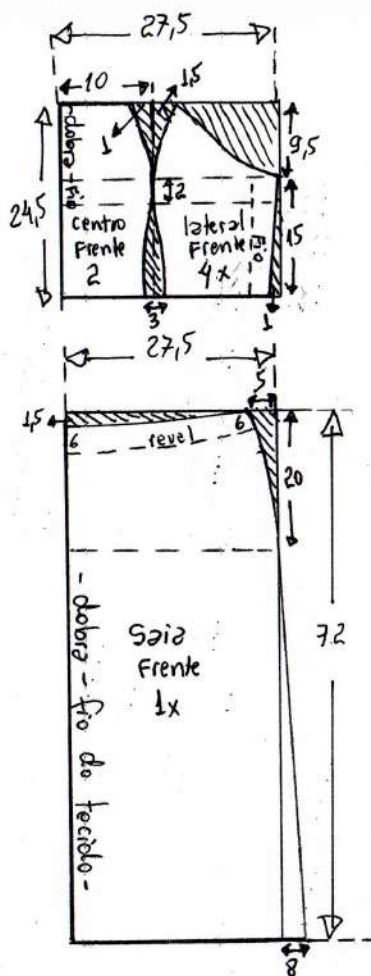
Molde sem  
margem de  
costura

Alças = 3 cm  
por 35 cm

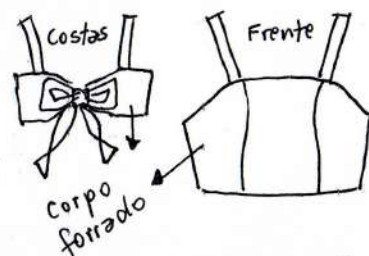
Tecido = 1,80 m de:  
viscose, viscolinho,  
lyocel, crepe  
Zíper saia = 20 cm

\* Acabamento cas  
da saia com  
revel. Copie o  
revel para cortá-lo  
separado.

Entretela para o revel = 20 cm



Conjunto top e saia  
reta 44



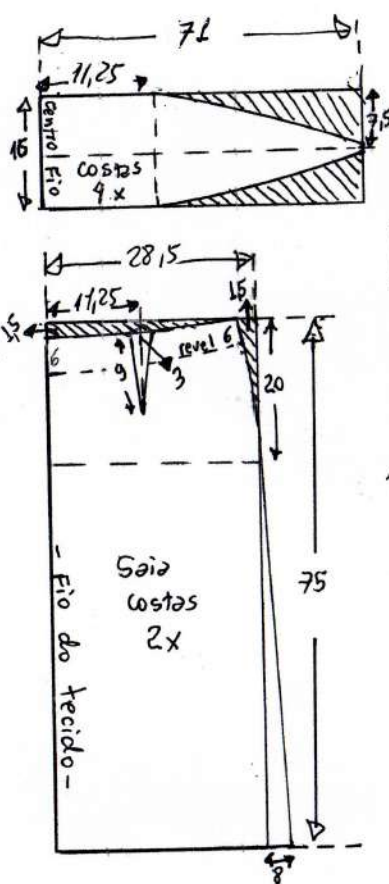
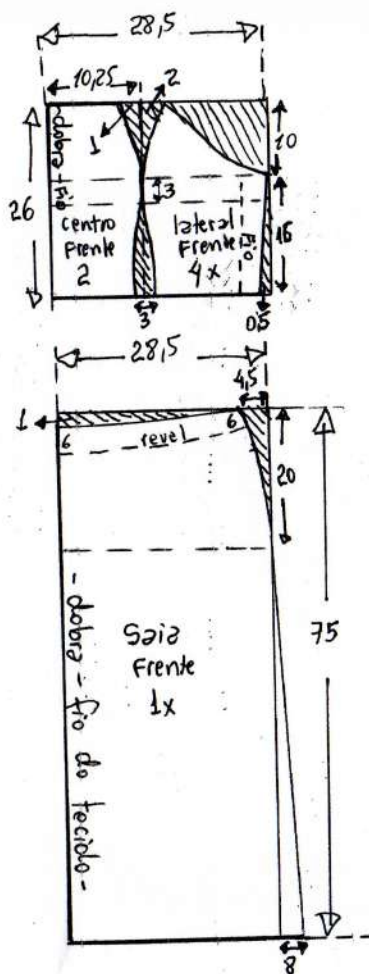
Molde sem  
margem de  
costura

Alças = 3 cm  
por = 36,5 cm

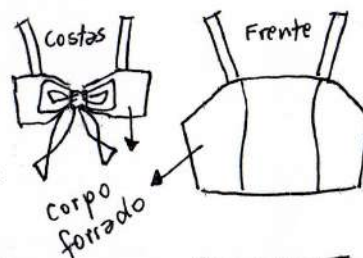
Tecido = 1,80 m de  
viscose, viscolinho,  
lyocel, crepe  
Zíper saia = 20 cm

\* Acabamento co's  
da saia com  
revel. Copie o  
revel para cortá-lo  
separado.

Entretela para o revel = 20 cm



Conjunto top e saia  
reta 46



Molde sem  
margem de  
costura

Alças = 3 cm  
por 39 cm

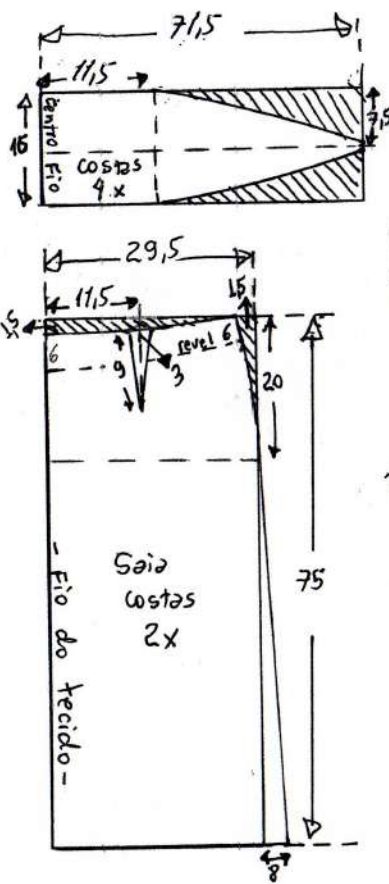
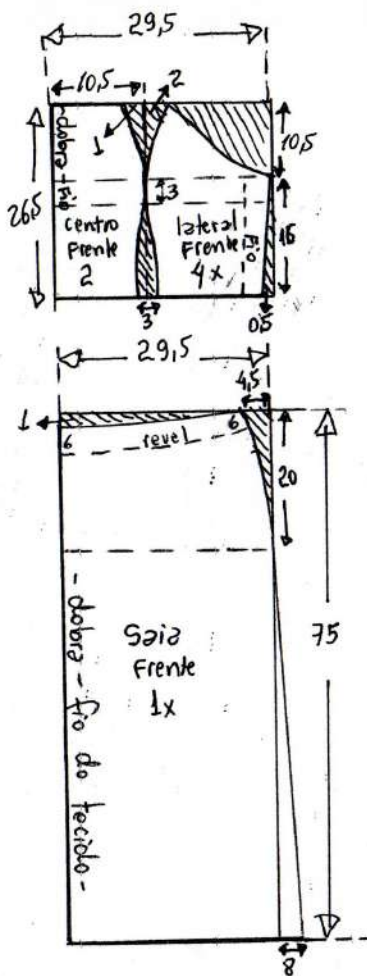
Tecido = 2,50m de  
viscose, viscolinho,  
lyocel, crepe

Zíper saia = 20 cm

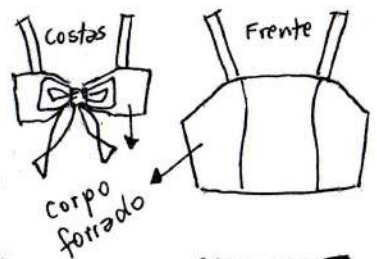
\* Acabamento costas  
da saia com  
revel. Copie o  
revel para cortá-lo  
separado.

Entretela para o revel = 20 cm





Conjunto top e saia  
reta 48



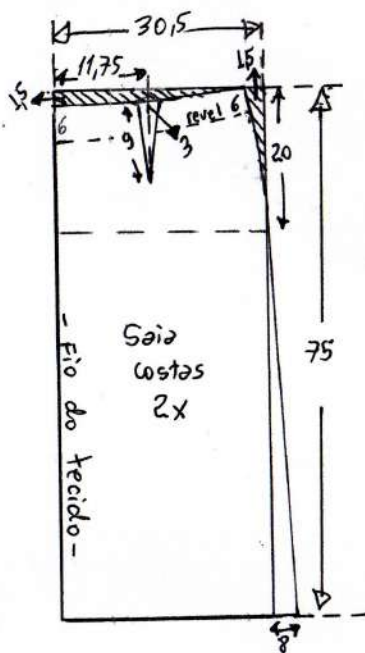
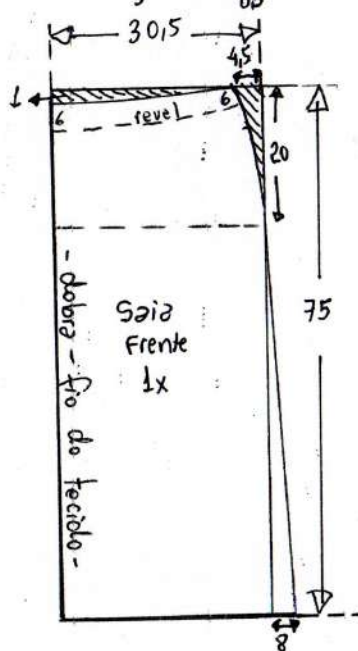
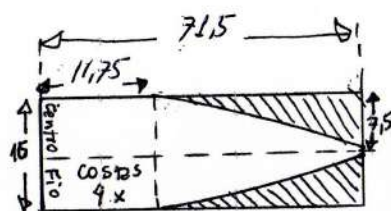
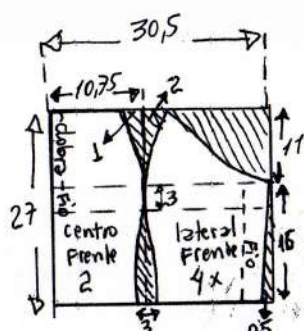
Molde sem  
margem de  
costura

Alças = 3 cm  
por 40,5 cm

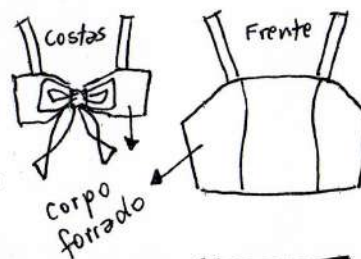
Tecido = 2,50 m de  
viscose, viscolinho,  
lyocel, crepe  
Zíper saia = 20 cm

\* Acabamento cos  
da saia com  
revel. Copie o  
revel para cortá-lo  
separado.

Entretela para o revel = 20 cm



Conjunto top e saia  
reta 50



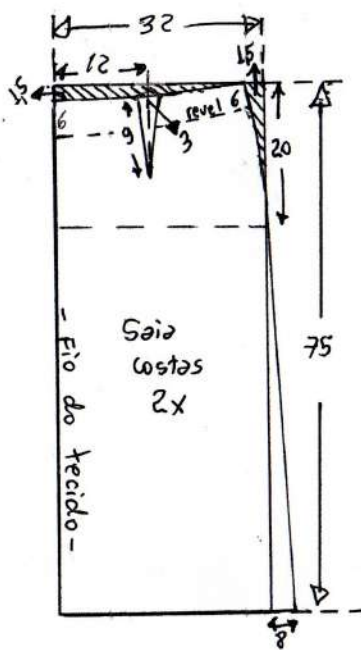
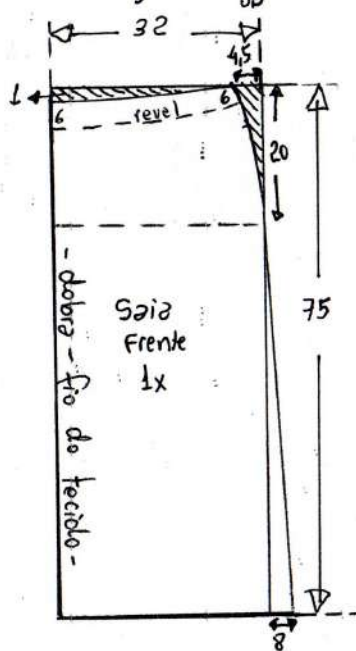
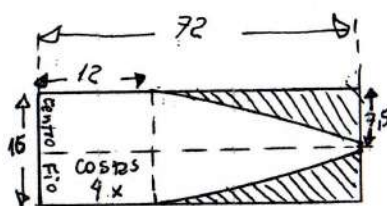
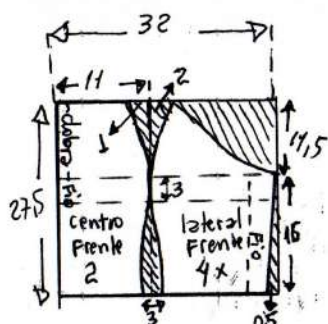
Molde sem  
margem de  
costura

Alças = 3 cm  
por 42 cm

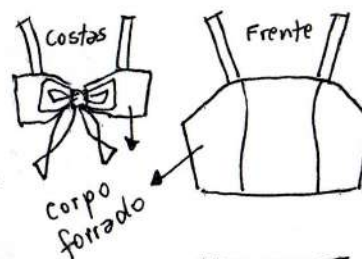
Tecido = 2,50 m de  
viscose, viscolinho,  
lyocel, crepe  
Zíper saia = 20 cm

\* Acabamento costas  
da saia com  
revel. Copie o  
revel para cortá-lo  
separado.

Entretela para o revel = 20 cm



Conjunto top e saia  
reta 52



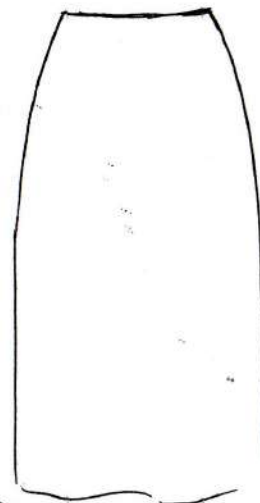
Molde sem  
margem de  
costura

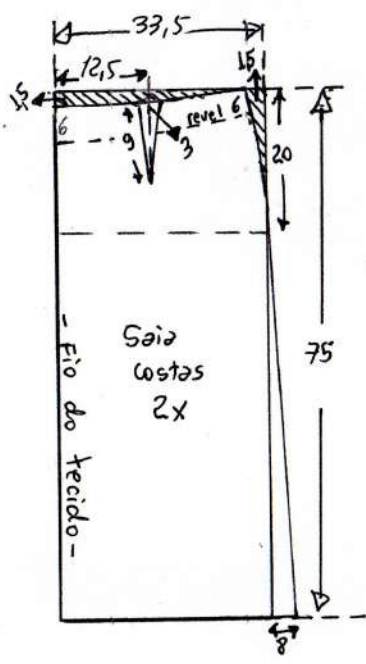
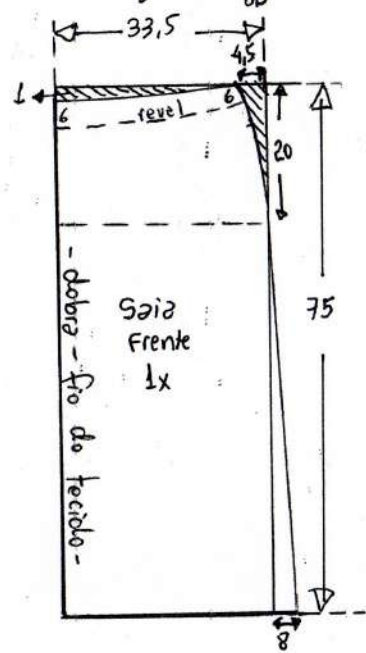
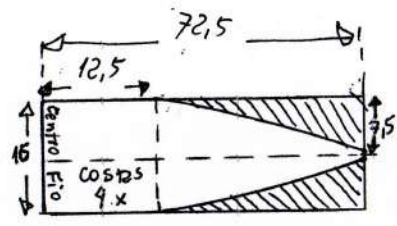
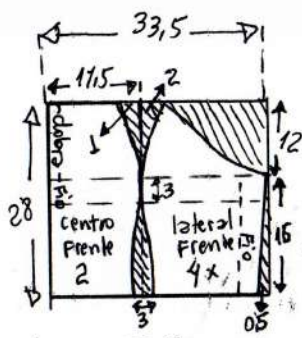
Alças = 3 cm  
por 43,5 cm

Tecido = 2,50 m de  
viscose, viscolinho,  
lyocel, crepe  
Zíper saia = 20 cm

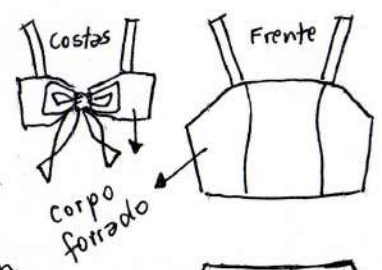
\* Acabamento cos  
do saia com  
revel. Copie o  
revel para cortá-lo  
separado.

Entretela para o revel = 20 cm





Conjunto top e saia  
reta 54



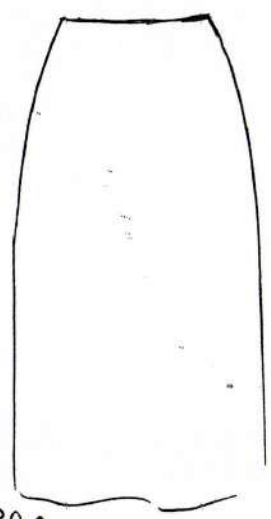
Molde sem  
margem de  
costura

Alças = 3 cm  
por 45 cm

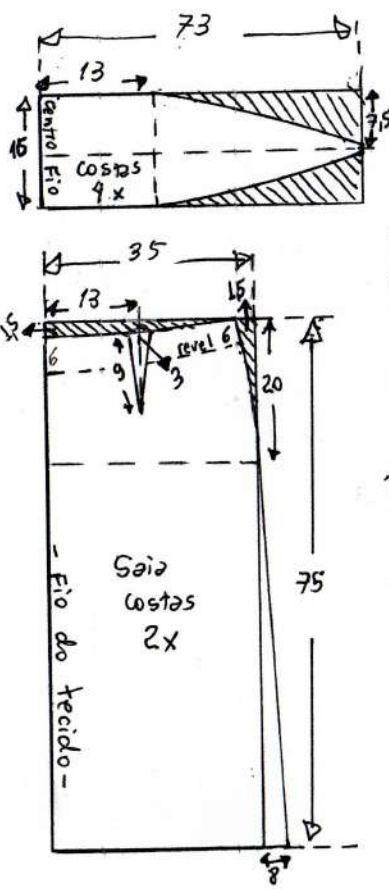
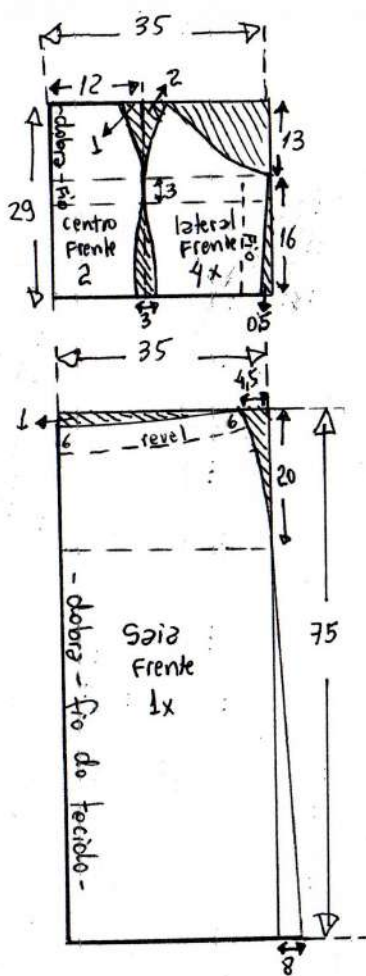
Tecido = 2,50 m de  
viscose, viscolinho,  
lyocel, crepe  
Zíper saia = 20 cm

\* Acabamento cos  
da saia com  
revel. Copie o  
revel para cortá-lo  
separado.

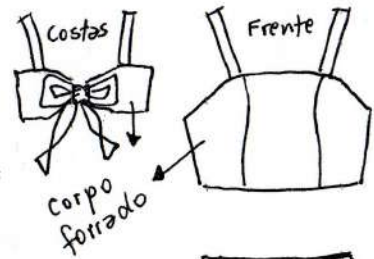
Entretela para o revel = 20 cm







Conjunto top e saia  
reta 56



Molde sem  
margem de  
costura

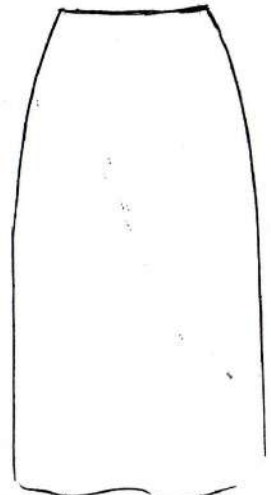
Alças = 3 cm  
por 48 cm

Tecido = 2,80 m de  
viscose, viscolinho,  
lyocel, crepe

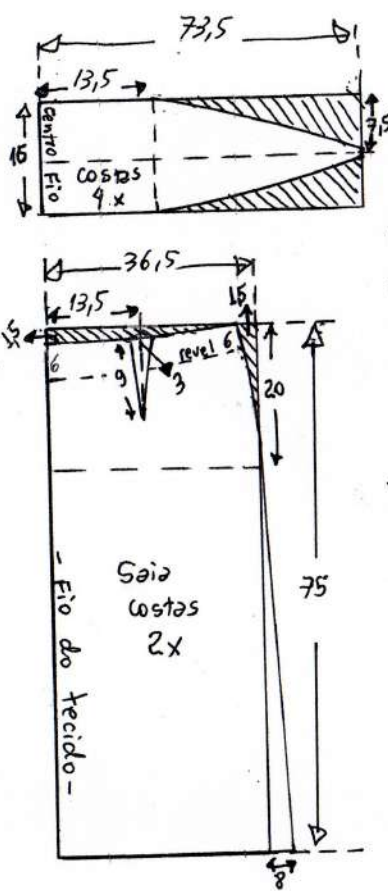
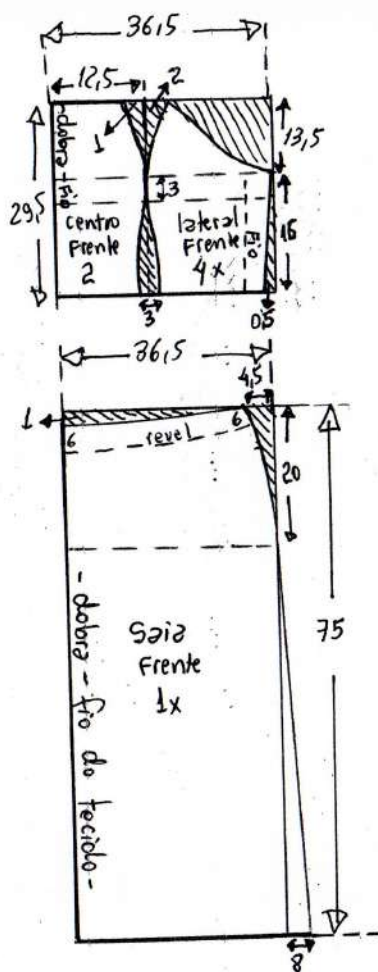
Zíper saia = 20 cm

\* Acabamento cós  
da saia com  
revel. Copie o  
revel para cortá-lo  
separado.

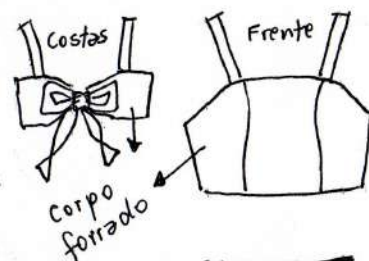
Entretela para o revel = 20 cm







Conjunto top e saia  
reta 58



Molde sem  
margem de  
costura

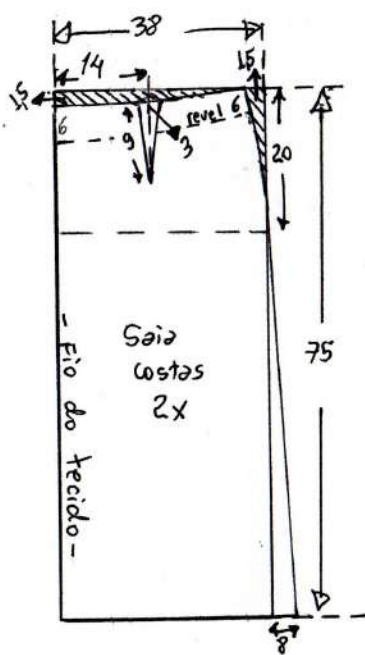
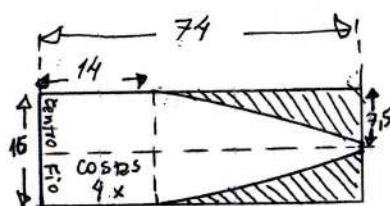
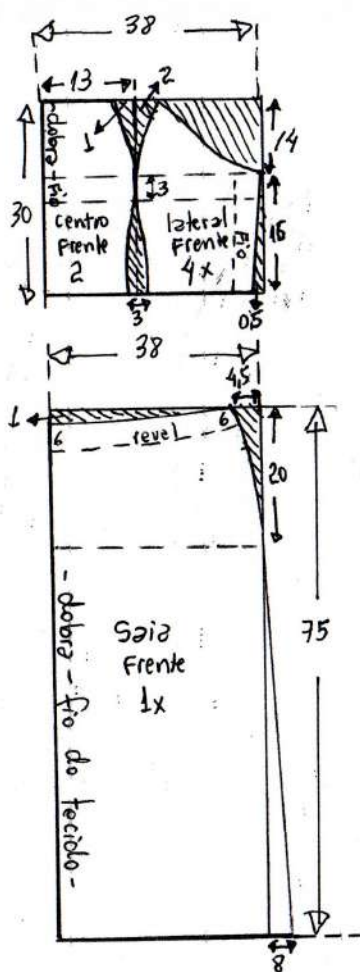
Alças = 3 cm  
por 50 cm

Tecido = 2,80 m de  
viscose, viscolinho,  
lyocel, crepe

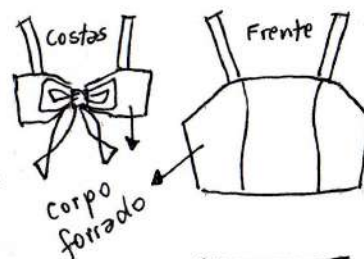
Zíper saia = 20 cm

\* Acabamento as  
da saia com  
revel. Copie o  
revel para cortá-lo  
separado.

Entretela para o revel = 20 cm



Conjunto top e saia  
reta 60



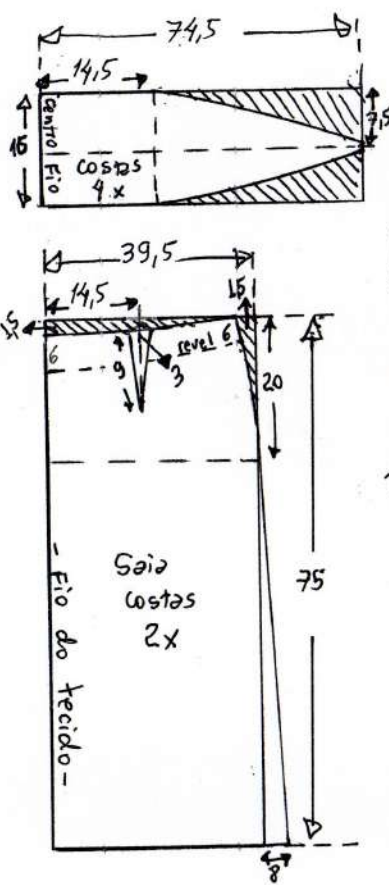
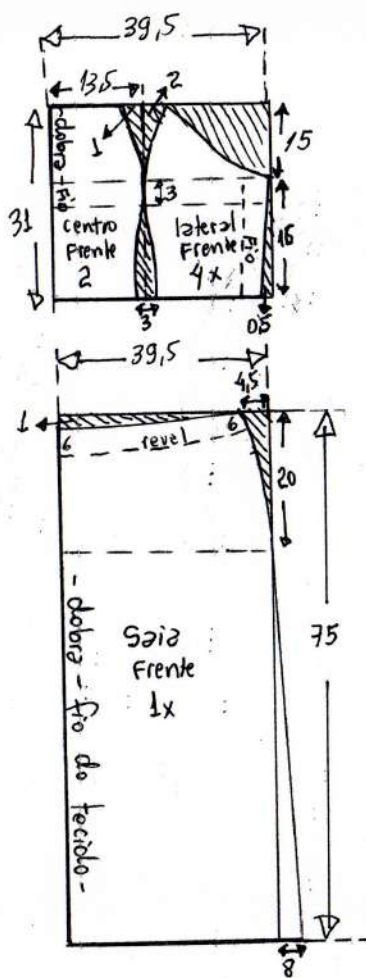
Molde sem  
margem de  
costura

Alças = 3 cm  
por 53 cm

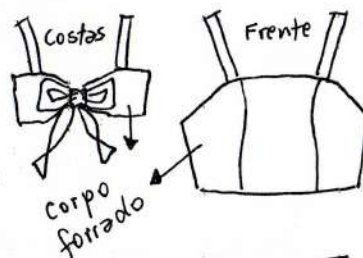
Tecido = 2,80 m de  
viscose, viscolinho,  
lyocel, crepe  
Zíper saia = 20 cm

\* Acabamento cos  
de saia com  
revel. Copie o  
revel para cortá-lo  
separado.

Entretela para o revel = 20 cm



Conjunto top e saia  
reta 62



Molde sem  
margem de  
costura

Alças = 3 cm  
por 55 cm

Tecido = 2,80 m de  
viscose, viscolinho,  
lyocel, crepe

Zíper saia = 20 cm

\* Acabamento cós  
da saia com  
revel. Copie o  
revel para cortá-lo  
separado.

Entretela para o revel = 20 cm