

County Surveyor's Office, Stanislaus County, California.
Swamp and Overflowed Lands.

Survey No. 96.

Township 4 South

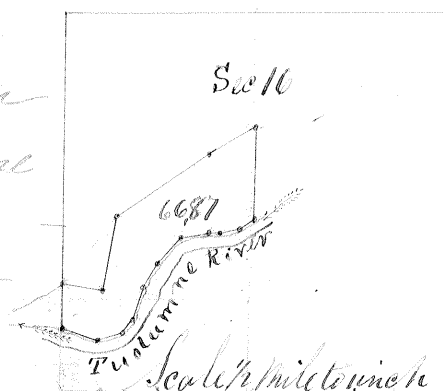
Range 8 East

Section 16. All between the U. S. Meander line and the right bank of the Tuolumne River in the West 1/2 of Section 16.

Base and Meridian of Mount Diablo.

Containing 66.87 Acres.

Surveyed April 5th 1859 for
Joseph Hawthorn.
Field Notes.



1000 in. full

Beginning at Meander Post on line between sections 16 & 17.

Thence run on U. S. Meander line S 80 1/2° E 8.32 ch, N 10° E 15.86 ch, N 34 3/4° E 23.00 ch, N 59 1/2° E 11.69 ch to 1/4 Section line. Thence run on 1/4 Section line S 1/4° E 19.00 ch to the right bank of the Tuolumne River. Meander down Stream. Run S 76° W 4.20 ch, S 73° W 4.63 ch, S 74 1/2° W 2.50 ch, S 75 1/2° W 6.16 ch, S 79 3/4° W 1.48 ch, S 30 1/4° W 3.00 ch, S 19° W 2.00 ch, S 36° W 3.05 ch, S 74° W 5.30 ch, N 72 1/2° W 7.62 ch to Section line. Thence run on Section line N 1/2° W 9.47 ch to the place of beginning.

Run by the true Meridian, Magnetic Variation East.
Surveyed in accordance with the Act of the Legislature concerning Swamp and Overflowed Lands, approved April 21st 1858 and the instruction of the Surveyor General.

Silas Wilcox
County Surveyor Stanislaus County

Approved April 21st 1859

M. A. Higley
Surveyor General

Recorded June 11th 1859

Silas Wilcox
County Surveyor