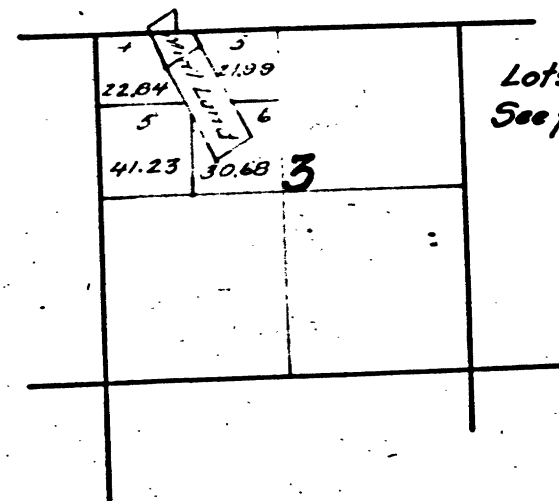


Township N° 2 North, Range N° 13 East, Mount Diablo Meridian

N.T.F.
1884

T. 2 N. R. 13 E. M. D. M.



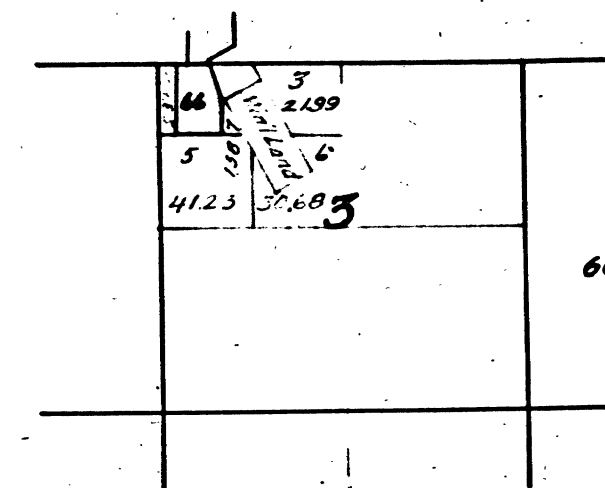
Lots 3, 4, 5 & 6 in Sec. 3 segregation of agricultural from Mineral land.
See field notes of Dep. Sur. A. B. Beaurais, dated April 12th 1884.

The above diagram showing amendments to Section 3, Township N° 2 North, Range N° 13 East, Mount Diablo Meridian, is correctly copied from the original map as amended and on file in this office.

U.S. Surveyor General's Office.
San Francisco California.
May 17th 1884

W. H. Brown.
U.S. Surr. Gen'l. Cal.

T. 2 N. R. 13 E. M. D. M.



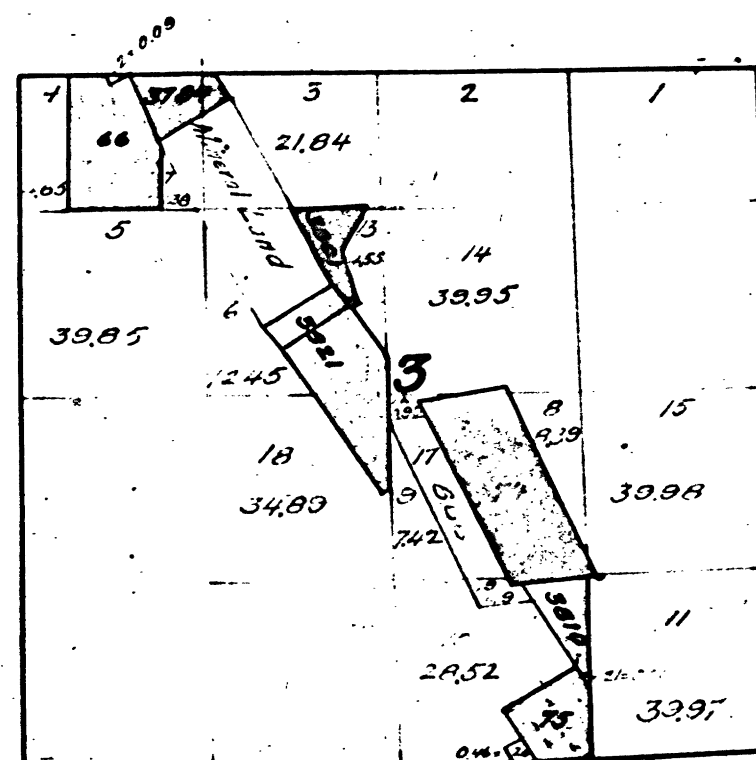
66 Peachey Placer Mine

The above diagram showing amendments to Section N° 3 Township N° 2 North, Range N° 13 East, Mount Diablo Meridian, is correctly copied from the original map as amended and on file in this office.

U.S. Surveyor General's Office.
San Francisco, Cal.
November 17th 1884

R. P. Hammond Jr.
U.S. Surr. Gen'l. Cal.

T. 2 N. R. 13 E. M. D. M.



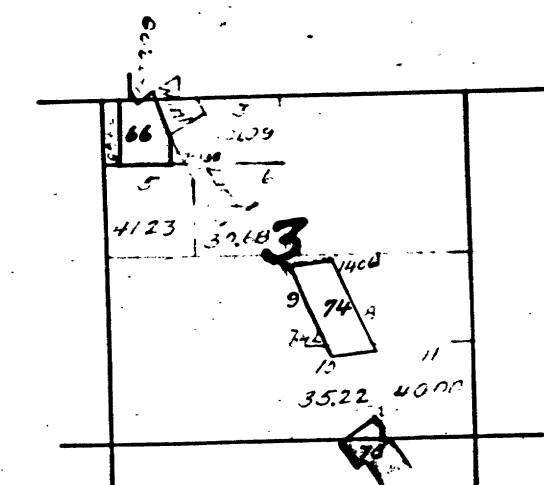
2508 66 Peachey P.M.
2750 74 Bolitho Q.M.
2751 75 Marble Springs Q.M. V. 76-4
(Mineral Land in Sec. 3. See field notes
of A. B. Beaurais April 12, 1884)
3784 Fairfax Q.M.
3801 Costa
3810 Storm King Q.M.
3821 Excelsior Cons. Q.M. Allen Taylor Loc.
Excelsior

The above diagram of Section 3, Township N° 2 North, Range N° 13 East, Mount Diablo Meridian, California, is correctly constructed from official plats on file in this office.

U.S. Surveyor General's Office.
San Francisco California
November 6, 1901

J. M. Glean.
U.S. Surveyor General for California.

T. 2 N. R. 13 E. M. D. M.



66 Peachey Placer Mine
75 Marble Springs Quartz Mine.

The above diagram of Section N° 3, Township N° 2 North, Range N° 13 East, Mount Diablo Meridian, is correctly copied from the original map as amended and on file in this office.

U.S. Surveyor General's Office.
San Francisco, California.
January 8th 1889.

R. P. Hammond Jr.
U.S. Surr. Gen'l. Cal.

DEPARTMENT OF THE INTERIOR,
GENERAL LAND OFFICE,
Washington, D. C. Feb. 5, 1889.
I hereby certify that this is a true copy
of the plat of official survey of the lands
to which it relates, on file in this office.

H. H. Brown.
Recorder, General Land Office.

CHAINS

CHAINS
10 20 40 60 80 120

41 127

3

T 2 N R 13 E M D

42
BIN