

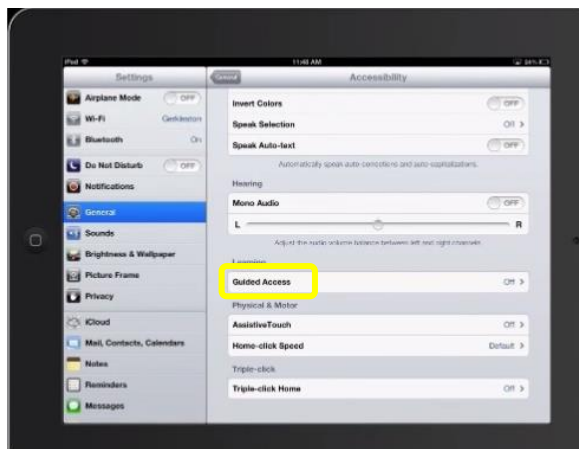
Guided Access:



Select General Settings

Accessibility

Guided Access





Turn on Guided Access

Plug in password > verify



Type in your password
and retype to confirm

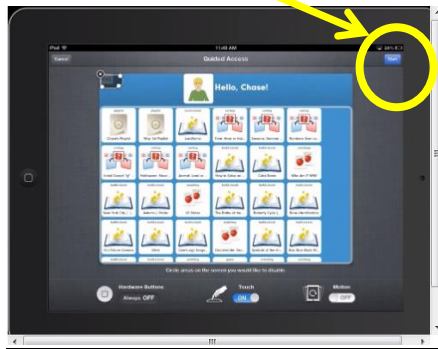
Tap home button to exit settings

Select your target program and open



Triple click on the home button

Select start



Guided Access has been activated

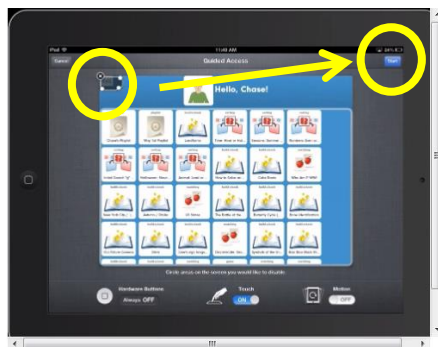
To select a specific activity in the application:

Repeat the triple click on the home button



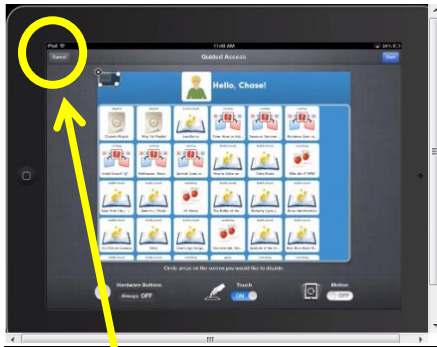
Turn on Guided access again – triple click home button

Re-enter password and highlight/select the Exit button



The student cannot exit the actual activity until the lesson is completed.

Turn guided access off: triple click the home button,



Select end in upper left corner; Guided Access is ended – you will see a visual prompt indicating same.