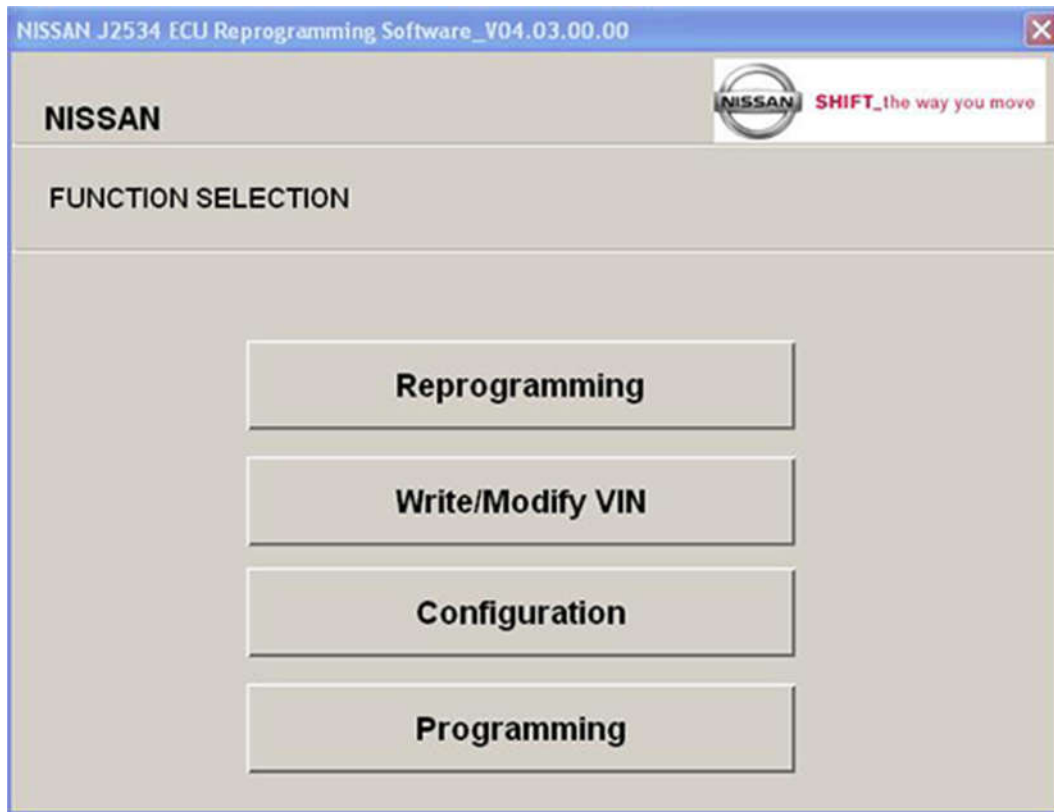
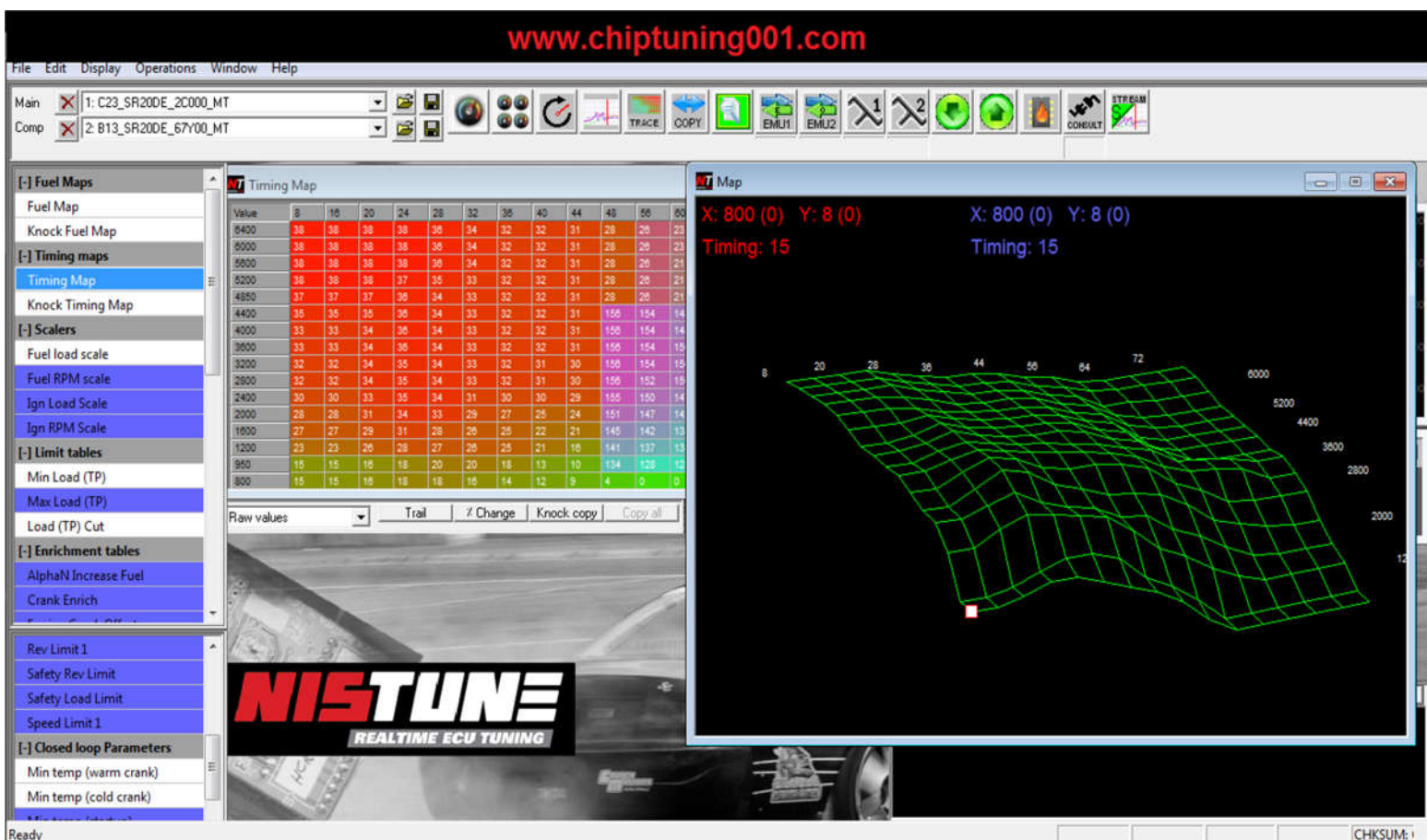


Nissan J2534 ECU Reprogramming V03.08 + 4GB Calibration Files + Manual

The Nissan ECU Reprogramming Software (NERS) is a J2534 based ECU Reprogramming tool that is used for the reprogramming of ECUs. NERS application can be used with any J2534-1 compliant passthru device (Vehicle Communication Interface). However before using a new passthru device with NERS application, the device needs to be validated for compatibility with NCT application.



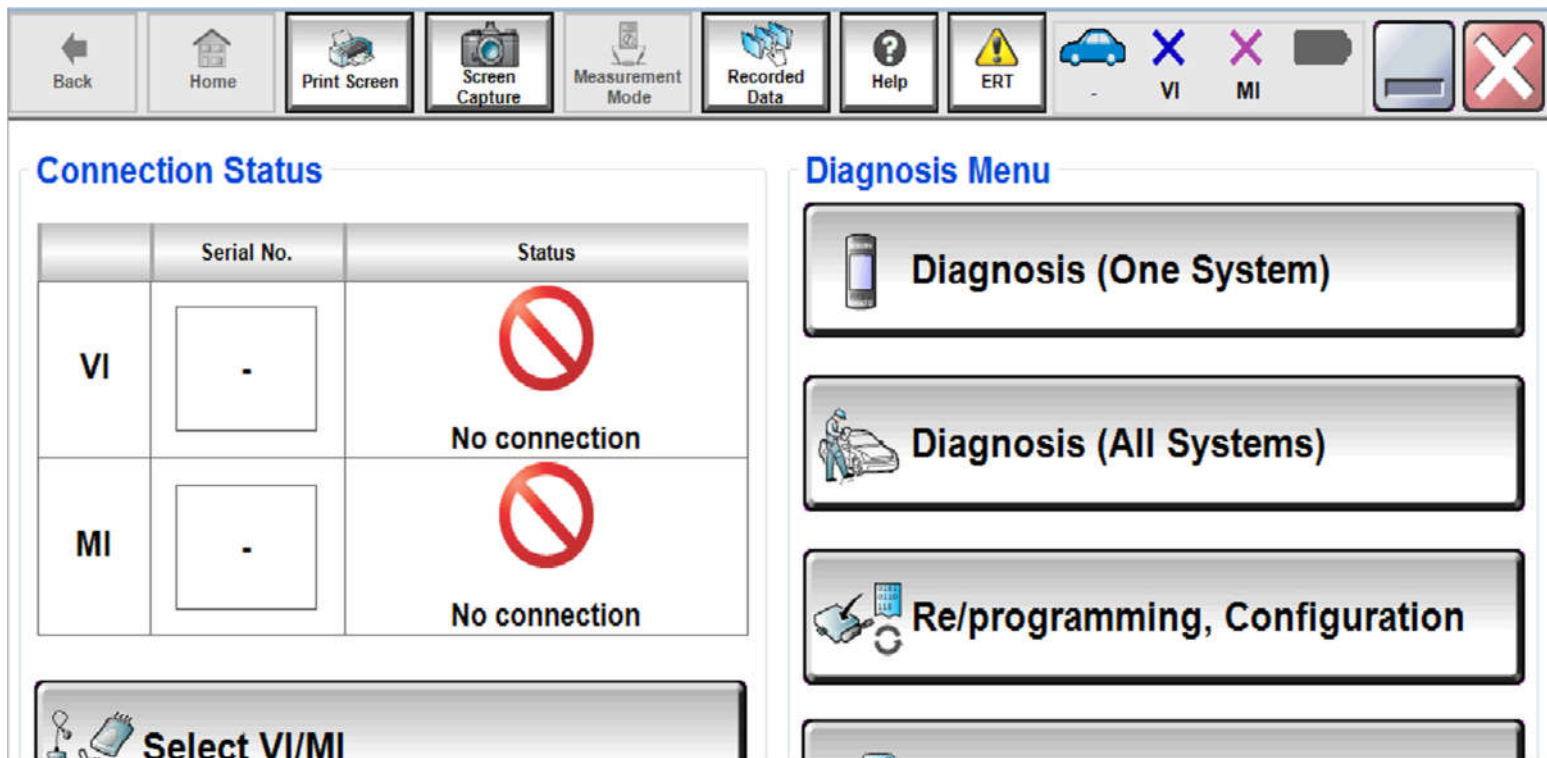
Nissan Tuning (NISTUNE)



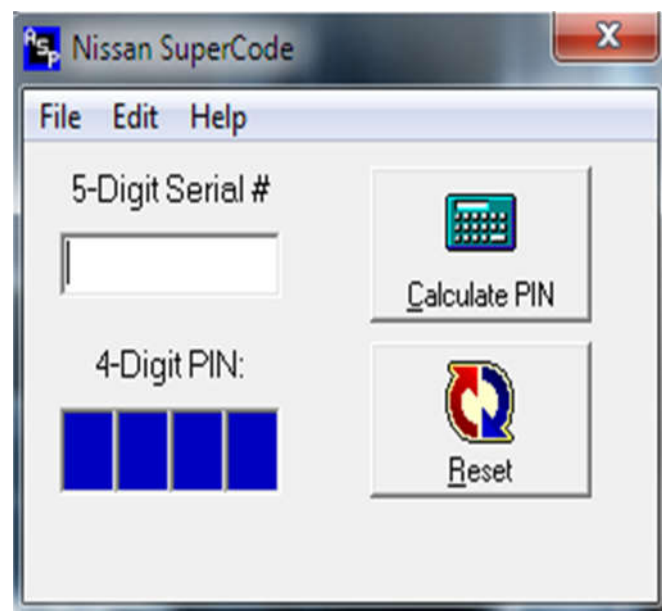
Nissan Consult III+ 73.20 Programming Data 71.40 [2018] Pass Thru J2534

Nissan Consult III Program for diagnostics and reprogramming of NISSAN, INFINITI and DATSUN vehicles. pass thru functions are limited for ECM and TCM, Normal work full functions is guaranteed only with the original card or

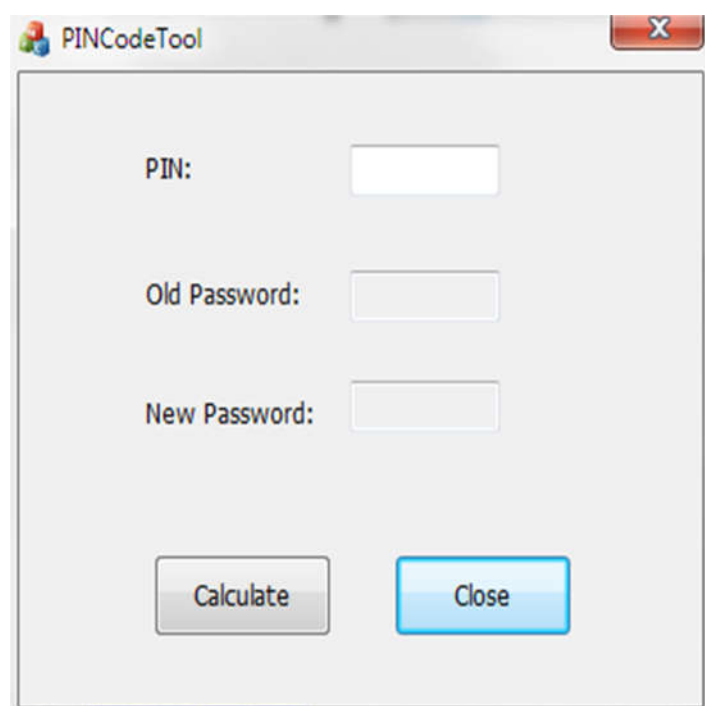
a good clone Consult VI2



Nissan Super Code Calc

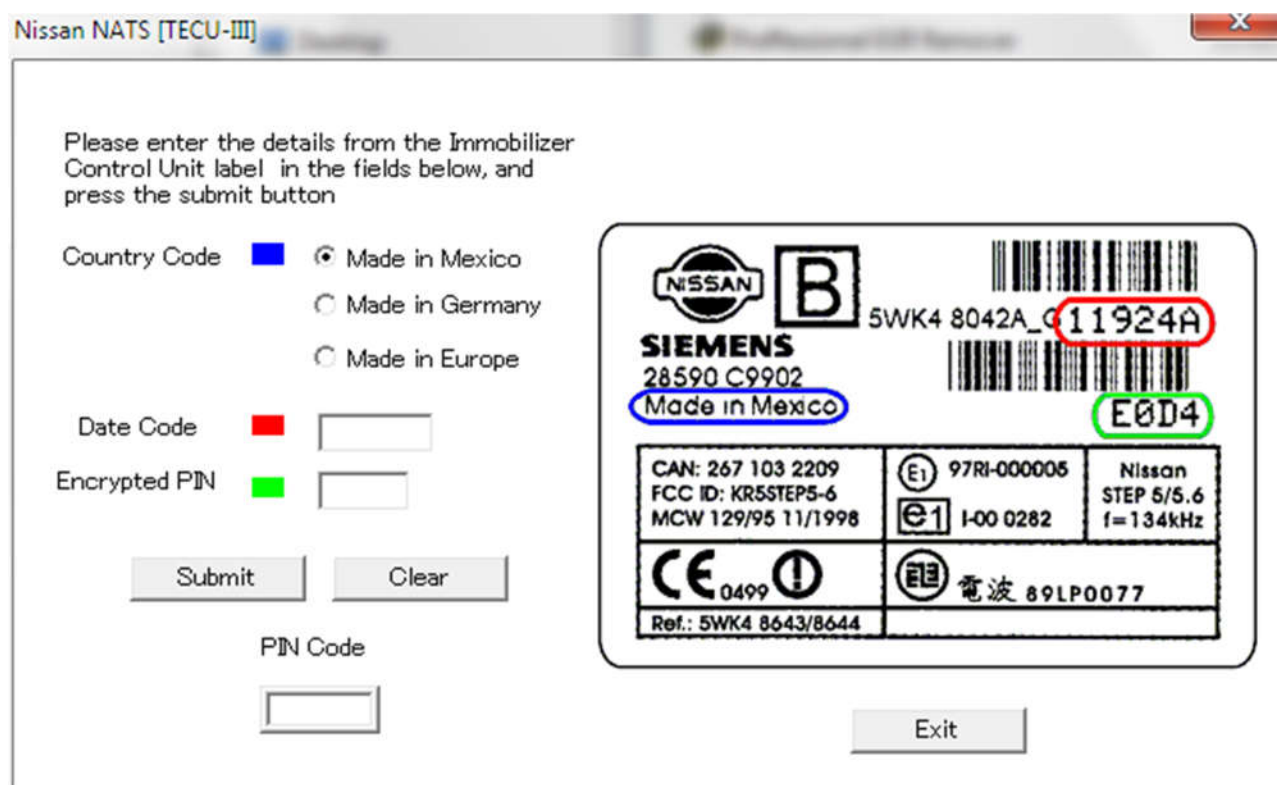


Nissan Password Old+New Calc



A screenshot of a software window titled "PINCodeTool". It contains three input fields: "PIN:", "Old Password:", and "New Password:". Below these fields are two buttons: "Calculate" and "Close".

Nissan Siemens PIN Code Calc 1+2



A screenshot of a software window titled "Nissan NATS [TECU-III]". It contains a form for entering details from the Immobilizer Control Unit label. The form includes fields for Country Code (with a blue square icon), Date Code (with a red square icon), and Encrypted PIN (with a green square icon). There are also radio buttons for "Made in Mexico", "Made in Germany", and "Made in Europe". Below these fields are "Submit" and "Clear" buttons. At the bottom, there is a "PIN Code" field and an "Exit" button.

Please enter the details from the Immobilizer Control Unit label in the fields below, and press the submit button

Country Code ☒ Made in Mexico
☐ Made in Germany
☐ Made in Europe

Date Code

Encrypted PIN

Submit Clear

PIN Code

Exit

NISSAN **B** 5WK4 8042A_011924A
SIEMENS
28590 C9902
Made in Mexico **E0D4**

CAN: 267 103 2209 FCC ID: KR5STEP5-6 MCW 129/95 11/1998	(E1) 97RI-000005 (e1) I-00 0282	Nissan STEP 5/5.6 f=134kHz
CE 0499	電波 89LP0077	
Ref.: 5WK4 8643/8644		

Please enter the details from the Smart Entrance Control unit(SEC-E) label in the fields below and press the submit button On P12 model, the label, showing the DATE CODE and ENCRYPTED PIN is located on the Smart Entrance Control unit(SEC-E), NOT on the Immobilizer Control Unit as with other models.

Date Code



Encrypted PIN



Submit

Clear

PIN Code



28550 AV 7

SIEMENS

5WK4 8123

10



03

01354h

Made in Europe	433 MHz
SPLS/RX-9/2001	Ref:5WK4 8812
CE 0199	125 kHz Ref:5WK4 8124
	e1 1-00 XXXX
MCW XXX/XX XX/XXXX	



C448

Car Pro Key For Nissan PIN Calc and X entry advanced functions

Car select Settings Update About

BCM\IMMU to PIN

BCM\IMMU to PIN

ICU to PIN

SEC to PIN

CALC

CarProKey sn: _____

www.obdbytes.webs.com

www.chiptuning001.com

allobp@yahoo.com

