

LOCATED IN THE SW 1/4, SE 1/4, SEC 33, T 5 N, R 25 E,  
MDB&M, MONO COUNTY, CALIFORNIA.

THIS MAP CORRECTLY REPRESENTS A SURVEY  
MADE BY ME OR UNDER MY DIRECTION IN  
CONFORMANCE WITH THE REQUIREMENTS OF  
THE LAND SURVEYOR'S ACT AT THE REQUEST  
OF JUAN E. ARACHE ~~ON~~ APRIL OF 1983.

THIS MAP HAS BEEN EXAMINED FOR CONFORMANCE  
WITH THE REQUIREMENTS OF THE LAND SURVEYOR'S  
ACT THIS 20<sup>TH</sup> DAY OF JUNE, 1983.

FILED THIS 23RD DAY OF JUNE, 1983, AT  
9:00 A.M. IN BOOK 1 OF R/S  
 AT PAGE 93, AT THE REQUEST OF JUAN  
 E. ARRACHE.  
 INSTRUMENT # 8438

John R. Langford  
R.C.F. No. 27104

Richard Basson  
DEPUTY COUNTY SURVEYOR

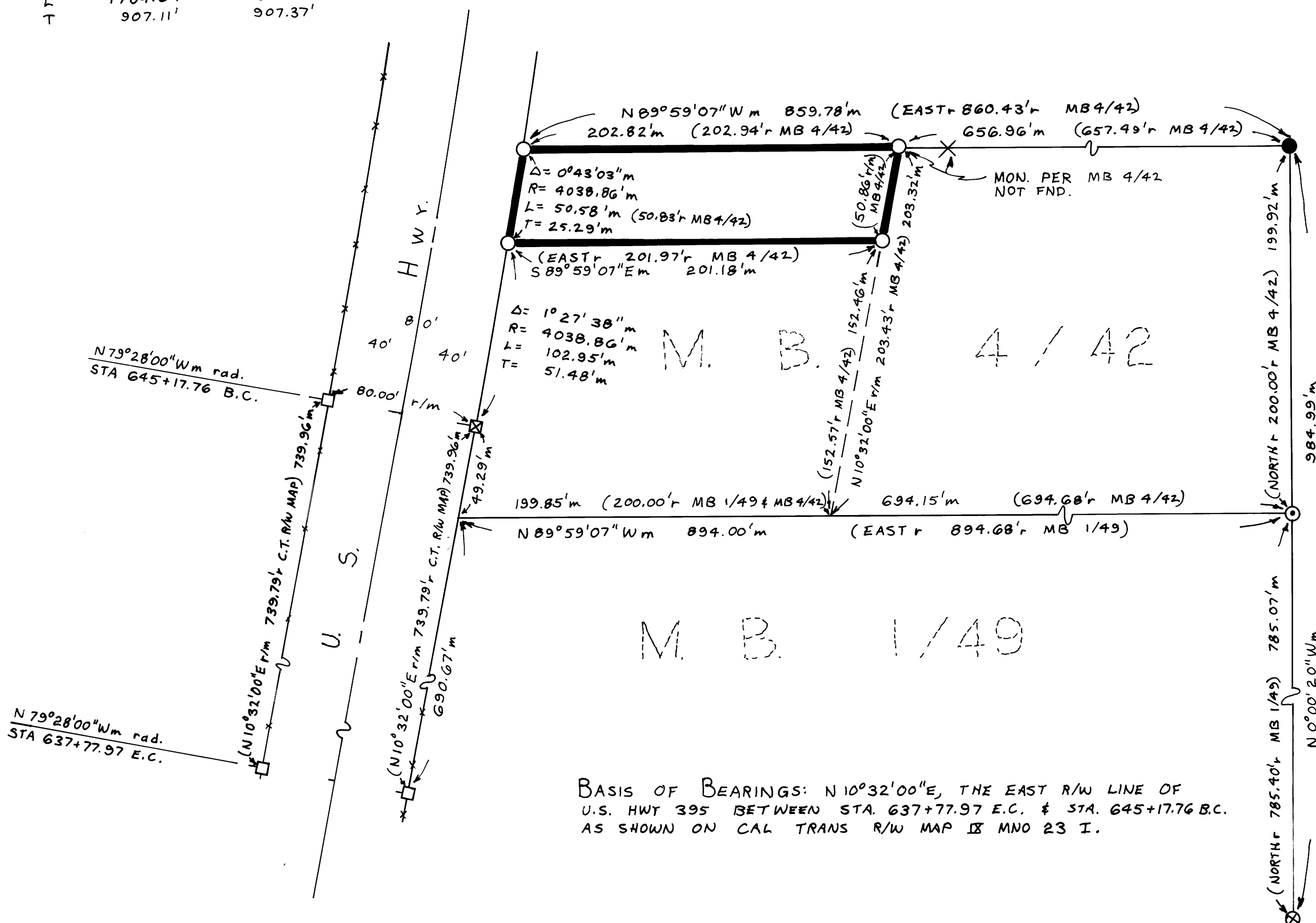
By: Alvah E. Bishop  
COUNTY RECORDER



- ☐ FND. 6"x6" C.T. CONC. HWY. MON.  
☒ FND. 2x2 H#T.  
☒ FND. 1/2" # REBAR IN CONC. PER MB 4/42.  
☒ FND. RK.MND. IN LOCATION OF 2x2 H#T PER MB 1/49.  
2x2 H#T NOT FND.  
☒ FND. "X" MARK IN SMALL BOULDER PER MB 1/49.  
BOULDER LOCATED IN A WASH 6" UNDER SILT.  
☐ SET 1" I.D. I.P. & TAG RCE 27104.  
r BASED ON RECORD INFORMATION.  
m BASED ON FIELD MEASUREMENTS.  
X X FENCELINE.

EAST R/W LINE CURVE DATA

	m	r (C.T. R/W MAP)
Δ	25°19'00"	25°19'00"
R	4038.86'	4040.00'
L	1784.61'	1785.11'
T	907.11'	907.37'



BASIS OF BEARINGS: N10°32'00"E, THE EAST R/W LINE OF  
U.S. HWY 395 BETWEEN STA. 637+77.97 E.C. & STA. 645+17.76 B.C.  
AS SHOWN ON CAL TRANS R/W MAP 18 MNO 23 I.