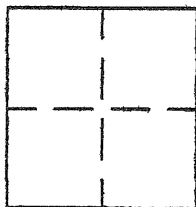


CORNER RECORD

APN No. 81D - 1650 - 20 - 1 (Optional)Document Number CR 2836City of HAY WARDCounty of ALAMEDA, CaliforniaBrief Legal Description PARCEL 1, P.M. 2904 (128 M 18) & PARCEL 3, P.M. 6008 (200 M 74)

CORNER TYPE

Government Corner ☐ Control ☐
Meander ☐ Property ☒
Rancho ☐ Other ☐
Date of Survey March 12, 2006

COORDINATES (Optional)

N. _____
E. _____
Zone _____ Datum _____
Elev. _____

Corner - Left as found ☐ Found and tagged ☐ Established ☒ Reestablished ☐ Rebuilt ☐

In compliance with Section 8771 of the Professional Land Surveyors' Act, this corner record is being filed to ESTABLISH _____ / REESTABLISH _____ the position of an existing monument PRIOR _____ / SUBSEQUENT _____ to street or highway reconstruction. (Use this portion only when applicable.)

Identification and type of corner found: Evidence used to identify or procedure used to establish or reestablish the corner:
See Map

A description of the physical condition of the monument as found and as set or reset: _____

See MAP

SURVEYOR'S STATEMENT

This Corner Record was prepared by me or under my direction in conformance with the Land Surveyors' Act on MARCH 8, 2006.

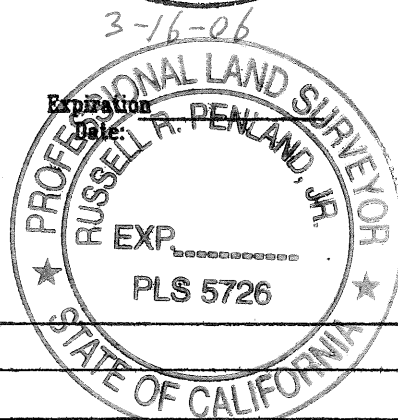
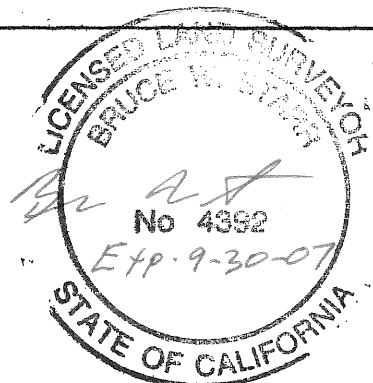
Signed [Signature] L.S. ~~or~~ C.E. Number 4392

COUNTY SURVEYOR'S STATEMENT

This Corner Record was received 10-05-06 and examined and filed 12-11-06.

Signed [Signature] Title County Surveyor

County Surveyor's Comment _____



SCALE: 1" = 20'

HILLCREST

AVENUE

714.31

N 57° 16' 35" E

234.71

FOUND "PK" NAIL

FOUND STANDARD
CONCRETE MONUMENT
(TYPICAL)

N 29° 01' 04" W
7.64

20.05

132.05

25.10

SET 5/8" REBAR
WITH PLASTIC
CAP, "L.S. 4392"

PARCEL MAP 2904

PARCEL 1

(128 MAPS 18)

N 28° 32' 51" W

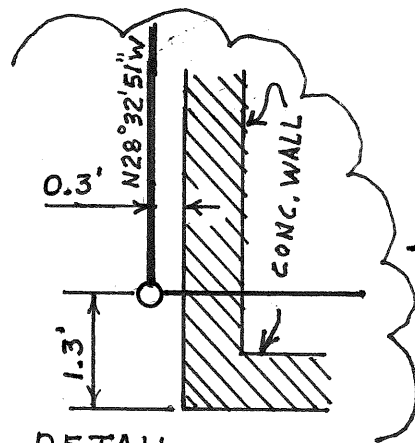
86.90

SET 3/8" REBAR
WITH PLASTIC CAP,
"L.S. 4392"

PARCEL MAP NO. 6008

PARCEL 3

(200 MAPS 76)



DETAIL

81D-1650-20-1