

# CORNER RECORD

Agency Index

BOOK 112 PAGE 17

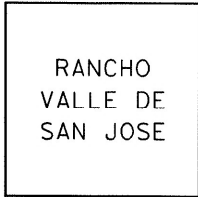
Document Number

CR 11570

City of LIVERMORECounty of ALAMEDA, California

Brief Legal Description

CITY MONUMENT AS SHOWN UPON PM 10069 (322-MAPS-75) NEAR THE INTERSECTION OF FIRST STREET AND SOUTH N STREET.

**CORNER TYPE**

Government Corner ☐ Control  
Meander ☐ Property  
Rancho ☐ Other

Date of Survey 4/5/2018**COORDINATES (Optional)**N. 2072619.6 ± E. 6193075.3 ±

Elevation

Units Metric ☐ U.S. Survey Foot ☒Horizontal Datum CCS 83Zone 3 Epoch Date

Vertical Datum

☐ Complies with Public Resources Code §§8801-8819☐ Complies with Public Resources Code §§8890-8902PLS Act Ref: ☐ 8765(d)☒ 8771☐ 8773☐ Other:Corner/  
Monument: ☒ Left as found☐ Established☐ Rebuilt☒ Pre-Construction☐ Found and tagged☐ Reestablished☒ Referenced☐ Post-Construction

Narrative of corner identified and monument as found, set, reset, replaced, or removed:

☒ See sheet #2 for description (s):

FOUND MONUMENT THAT COULD BE DAMAGED OR DESTROYED BY A PROPOSED GAS LINE CONSTRUCTION PROJECT. MONUMENT WAS REFERENCED AS SHOWN ON PAGE 2 OF 2.

THE PURPOSE OF THIS CORNER RECORD IS TO PRESERVE THE LOCATION OF THE MONUMENT PRIOR TO CONSTRUCTION. NO ATTEMPT WAS MADE TO DETERMINE THE RELATIONSHIP BETWEEN THE MONUMENT AND PROPERTY LINES, RIGHT-OF-WAY LINES, CENTERLINES OR OTHER MONUMENTS.

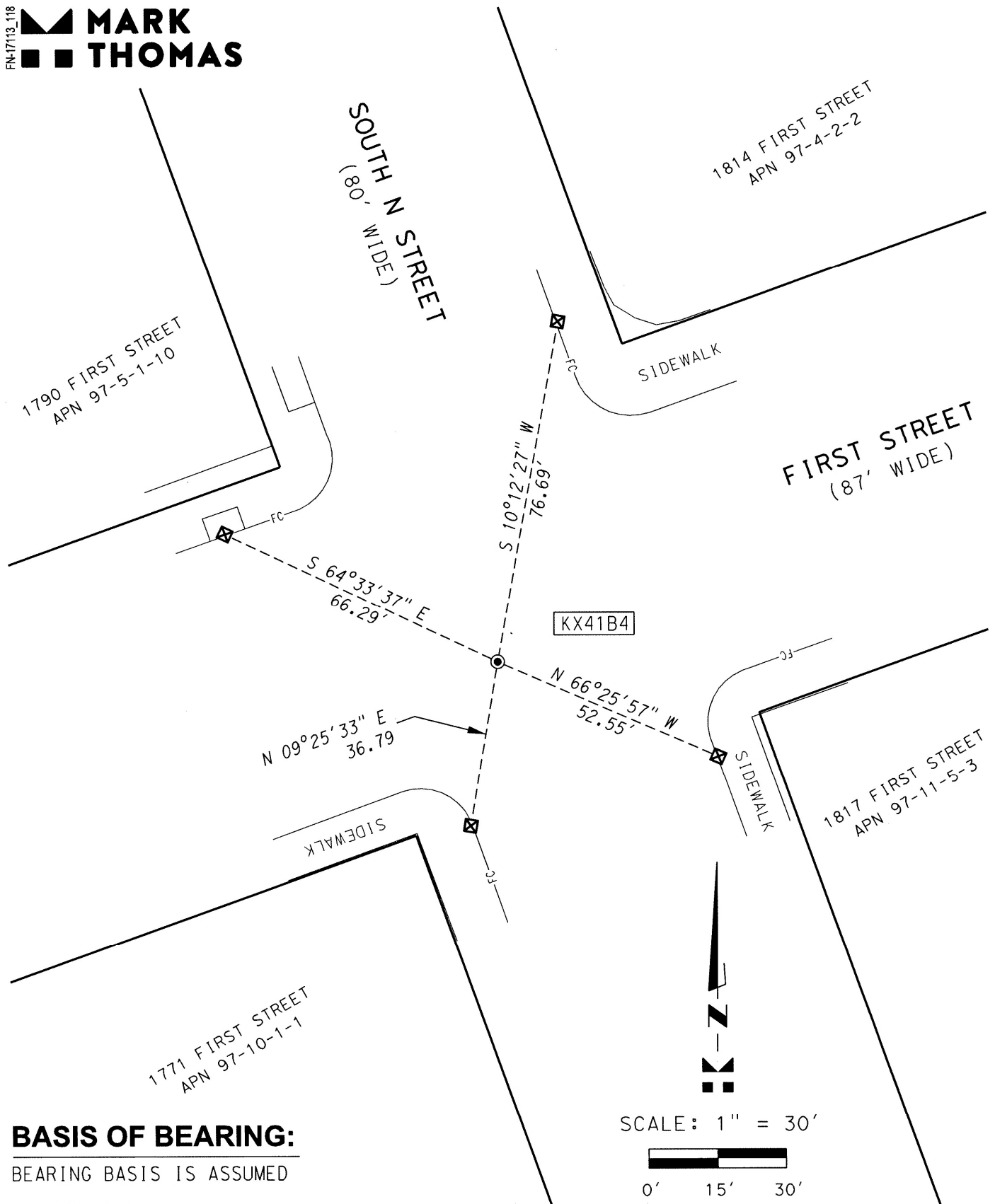
**SURVEYOR'S STATEMENT**

This Corner Record was prepared by me or under my direction in conformance with  
the Professional Land Surveyors' Act on AUGUST 8, 2018

Signed [Signature] P.L.S. or R.C.E. No. 8911**COUNTY SURVEYOR'S STATEMENT**This Corner Record was received 14 JUNE 2018and examined and filed 24 AUGUST 2018Signed Michael Rubner P.L.S. or R.C.E. No. 6843Title COUNTY SURVEYOR

County Surveyor's Comment

FN-17113\_118


**MARK  
THOMAS**
**BASIS OF BEARING:**

BEARING BASIS IS ASSUMED

**LEGEND:**

- FOUND CONCRETE MONUMENT WITH 3/8" PIN IN WELL
- ⊠ SET CUT CROSS FOR REFERENCE POINT IN TOP OF CONCRETE CURB
- KX41B4 ALAMEDA COUNTY MONUMENT IDENTIFICATION NUMBER