

This map correctly represents a survey made under my direction in conformance with the requirements of Chapter 15 of Division 3 of the Business and Professions Code at the request of J.B. Bias Jr. in August 1958.

Mark Thomas
Registered Civil Engineer No. 2578.

The bearing (N. 43° 00' E.) of the center line of La Paloma Avenue as shown on map of La Paloma Terrace recorded in Book "O" of Maps, page 81, was used as basis of bearings shown upon this map. All distances and dimensions are shown in feet and decimals thereof.

This map has been examined for conformance with the requirements of Chapter 15 of Division 3 of the Business and Professions Code this 17th day of Sept. 1958.
James B. Enochs, Acting County Surveyor.

By *[Signature]* Deputy
1518054

Filed for record this 17th day of SEPTEMBER 1958 at 3:34 P.M. in Book 97 of Maps at Page 35 at the request of Mark Thomas & Co.

#500 Syl C. Tully, County Recorder

By *E. B. O'Brien* Deputy.

RECORD OF SURVEY
OF A PORTION OF THE QUITO RANCHO
SARATOGA SANTA CLARA COUNTY
CALIFORNIA
FOR J. B. BIAS JR.
SCALE 1"=60' AUGUST 1958
MARK THOMAS & CO.
CIVIL ENGINEERS & SURVEYORS
SAN JOSE CALIFORNIA

97
35

4015

35

1518914

Filed for record this 19th day of September 1958 at 2:06 P.M. in Book 97 of Maps, at page 35, at the request of Mark Thomas & Co.
Syl C. Tully, County Recorder

#500

By *E. B. O'Brien* Deputy

This map correctly represents a survey made under my direction in conformance with the requirements of Chapter 15 of Division 3 of the Business and Professions Code at the request of Sam E. Manfre in September 1958.

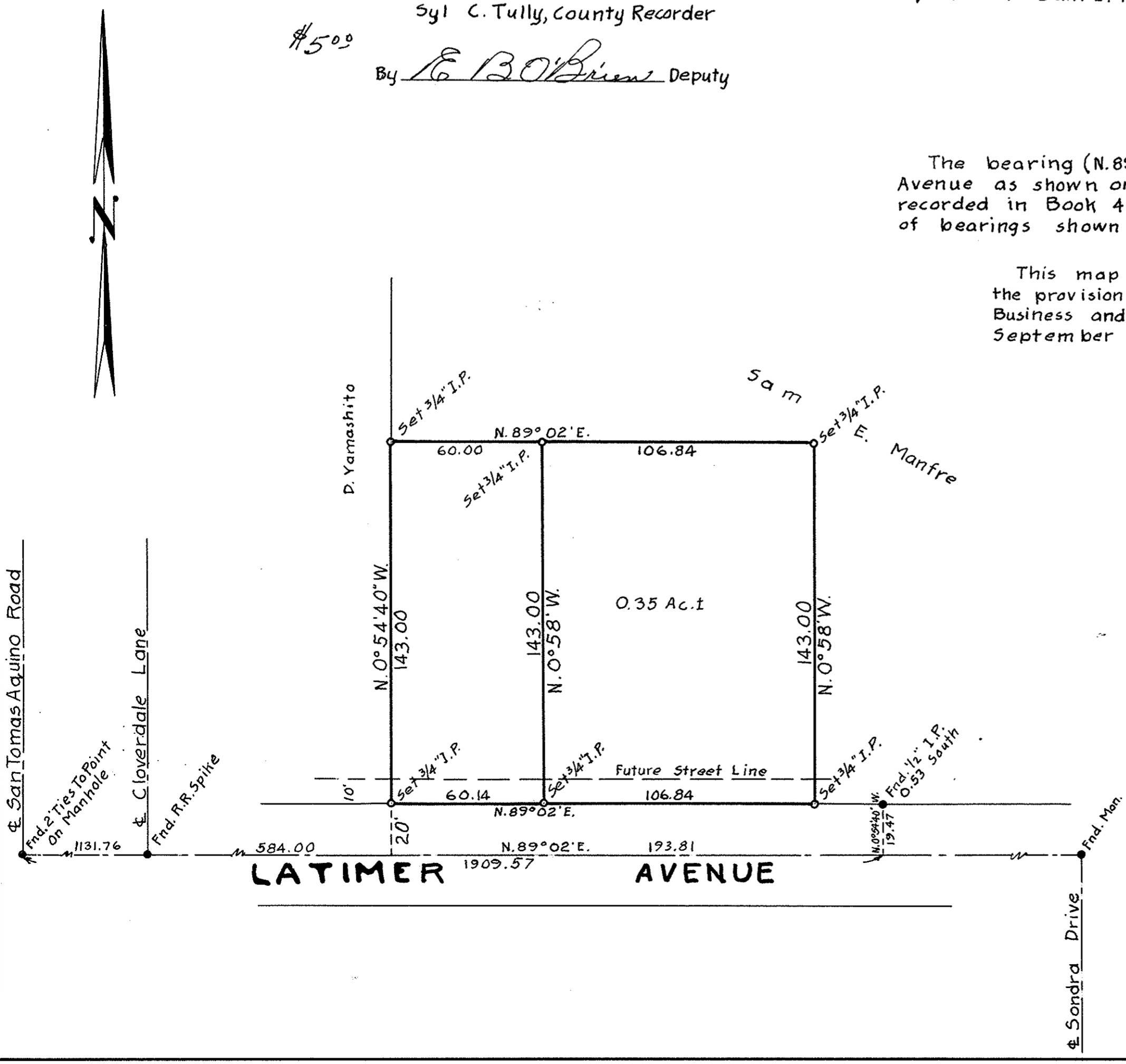
Mark Thomas
Registered Civil Engineer No. 2578

The bearing (N. 89° 02' E.) of the center line of Latimer Avenue as shown on Map of Tract No. 1040, Cloverdale recorded in Book 40 of Maps, page 20, was used as basis of bearings shown on this map.

This map has been examined for conformance with the provisions of Chapter 15 of Division 3 of the Business and Professions Code this 17th day of September 1958.

James B. Enochs, Acting County Surveyor.

By *[Signature]* Deputy.



RECORD OF SURVEY
OF PORTIONS OF THE
QUITO RANCHO
CITY OF CAMPBELL
SANTA CLARA COUNTY CALIFORNIA
FOR
SAM E. MANFRE
Scale 1"=40' September 1958
Mark Thomas & Co.
Civil Engineers & Surveyors
San Jose California

97
35

4015

35