

CORNER RECORD

Agency Index

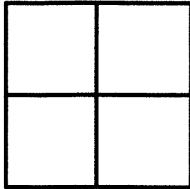
BK 98 PG 96

Document Number

CR10242City of BerkeleyCounty of Alameda

, California

Brief Legal Description Monument on Sterling Avenue, approximately 300 feet east
of the intersection of Whitaker Avenue.



CORNER TYPE

Government Corner ☐ Control ☒
Meander ☐ Property ☐
Rancho ☐ Other ☐

COORDINATES (Optional)

N. _____ E. _____

Elevation _____

Units Metric ☐ U.S. Survey Foot ☒

Horizontal Datum _____

Zone _____ Epoch Date _____

Vertical Datum _____

Date of Survey _____

☐ Complies with Public Resources Code §§8801-8819☐ Complies with Public Resources Code §§8890-8902PLS Act Ref: ☐ 8765 (d) ☒ 8771 ☐ 8773 ☐ Other: _____

Corner/
Monument: ☒ Left as found ☐ Established ☐ Rebuilt ☒ Pre-Construction
☐ Found and tagged ☐ Reestablished ☐ Referenced ☐ Post-Construction

Narrative of corner identified and monument as found, set, reset, replaced, or removed:

☐ See sheet #2 for description (s) :

2" Brass disk with punch, stamped "City of Berkeley".

SURVEYOR'S STATEMENT

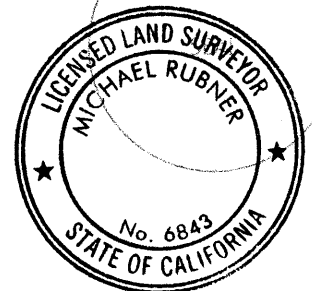
This Corner Record was prepared by me or under my direction in conformance with

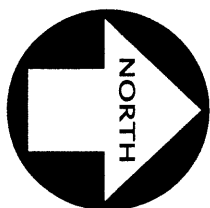
the Professional Land Surveyors' Act on June 20, 2017.Signed [Signature] P.L.S. or R.C.E. No. 8654

COUNTY SURVEYOR'S STATEMENT

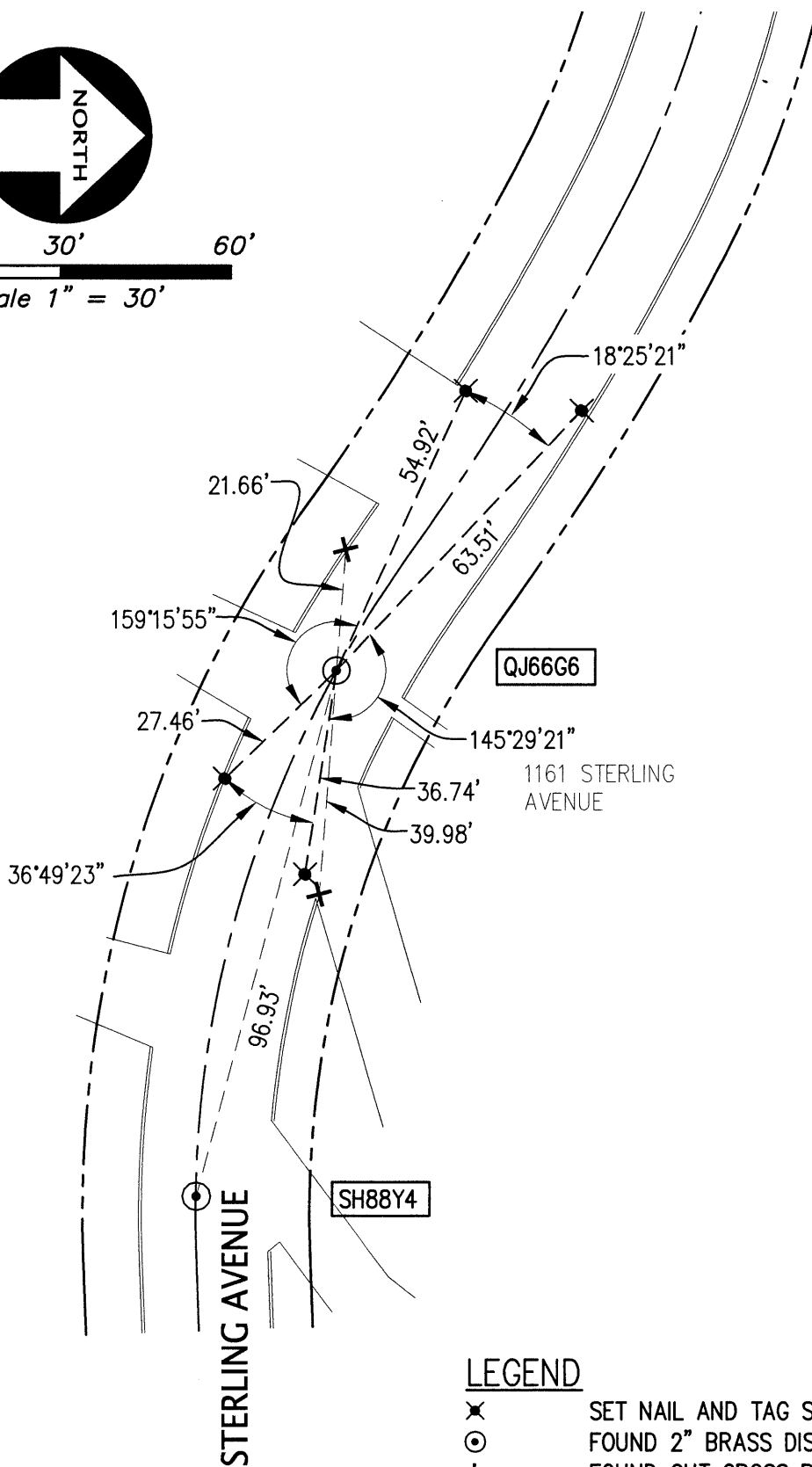
This Corner Record was received 30 JUNE, 2017and examined and filed 18 AUGUST, 2017Signed Michael Rubner P.L.S. or R.C.E. No. 6843Title COUNTY SURVEYOR

County Surveyor's Comment





0 15' 30' 60'
Scale 1" = 30'



LEGEND

- ✕ SET NAIL AND TAG STAMPED "LS8654"
- ⊙ FOUND 2" BRASS DISK
- +
- AA###A# FOUND CUT CROSS PER CR1102
- ALAMEDA COUNTY MONUMENT ID