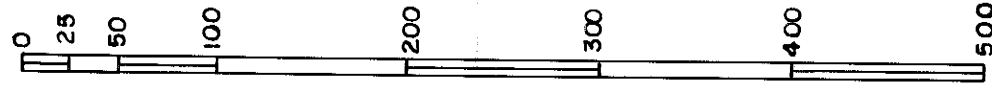


PARCEL MAP No 3/-/
MILE HI INVESTMENT CO. LAND
LOCATED IN N1/2 NW1/4 SW1/4 AND
S1/2 SW1/4 NW1/4 SEC. 22,
T. 8 N., R. 23 E., M.D.B&M.
MONO COUNTY, CALIFORNIA

SCALE - 1" = 100'



PLANNING COMMISSION'S CERTIFICATE

THIS IS TO CERTIFY THAT THIS PARCEL MAP IS IN ACCORD
WITH THE APPROVED TENTATIVE MAP OF THE PARCELS.

Bill Lamm
MONO COUNTY PLANNING COMMISSION

BASIS OF BEARING

THE BEARING OF S 0° 52' 30" W FOR THE SECTION LINE COMMON TO
SECTIONS 21 & 22 T. 8 N., R. 23 E., M.D.B&M. AS RECORDED ON BOOK 7 OF
PAGE 4 OF MAPS, MONO COUNTY RECORDS, IS THE BASIS OF BEARINGS
FOR THIS SURVEY.

COUNTY SURVEYOR'S CERTIFICATE

THIS MAP HAS BEEN EXAMINED THIS 7th DAY OF October,
1971, FOR CONFORMANCE WITH THE REQUIREMENTS OF SECTION
11575 OF THE SUBDIVISION MAP ACT.

Richard A. Paul, P.E.
COUNTY SURVEYOR

SURVEYOR'S CERTIFICATE

THIS MAP WAS PREPARED BY ME OR UNDER MY DIRECTION AND IS BASED
UPON A FIELD SURVEY IN CONFORMANCE WITH THE REQUIREMENTS OF THE
SUBDIVISION MAP ACT AT THE REQUEST OF GLENN A. DEVENPECK ON
JUNE 30, 1971. I HEREBY CERTIFY THAT IT CONFORMS TO ALL PROVISIONS
OF APPLICABLE STATE LAW AND LOCAL ORDINANCES HAVE BEEN COMPLIED
WITH.

Walter G. Reid
WALTER G. REID R.C.E. 7522
VIRGINIA CITY, NEVADA

No. 1610

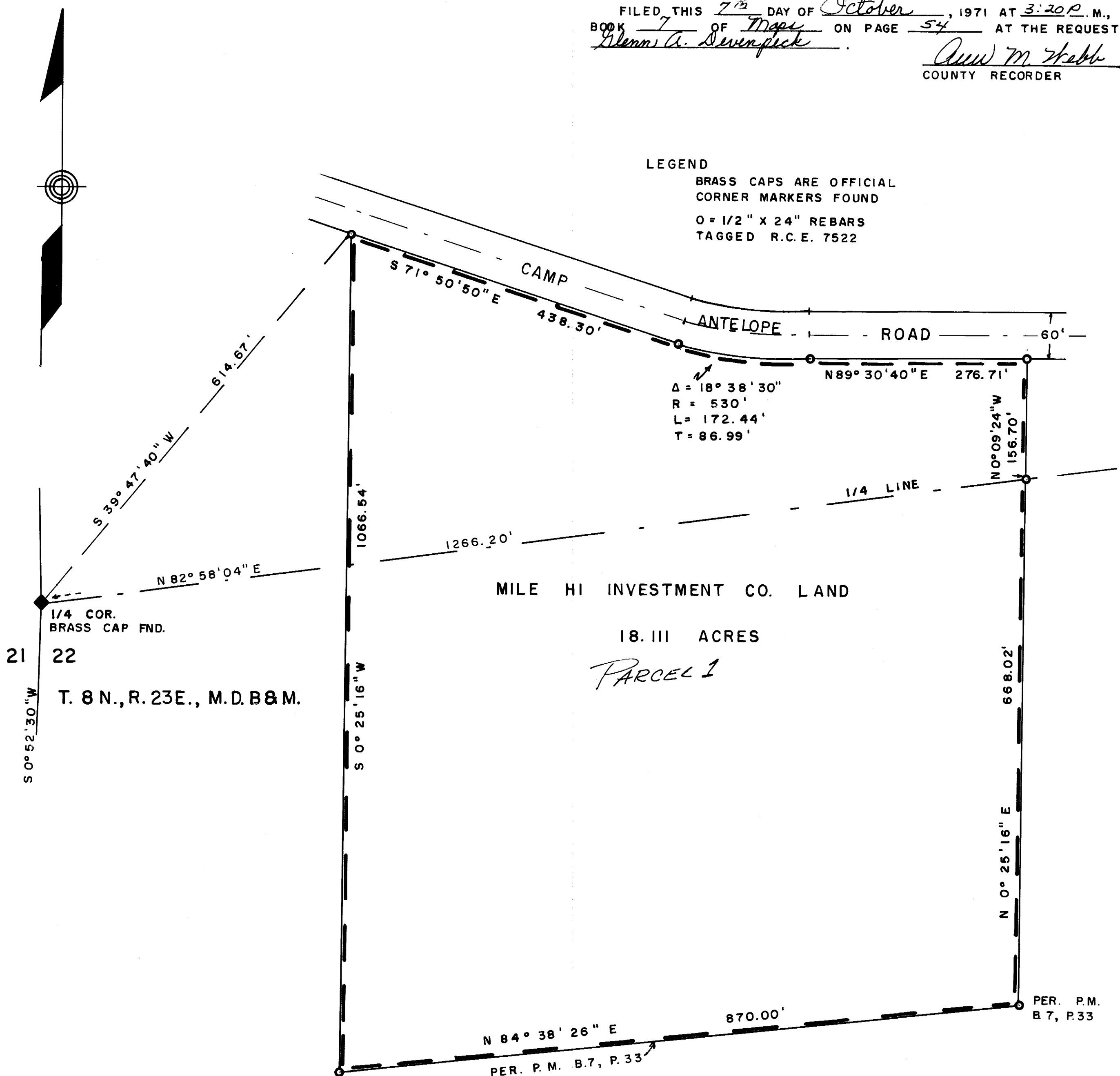
RECORDER'S CERTIFICATE

FILED THIS 7th DAY OF October, 1971 AT 3:20 P. M., IN
BOOK 7 OF Maps ON PAGE 54 AT THE REQUEST OF
Glenn A. Devenpeck

Ann M. Webb
COUNTY RECORDER

LEGEND

BRASS CAPS ARE OFFICIAL
CORNER MARKERS FOUND
O = 1/2" X 24" REBARS
TAGGED R.C.E. 7522



Vol. 7-19. 54