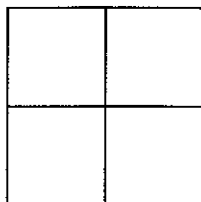


BK 33 PG 71

CORNER RECORDAPN No. 099 - 1250 - 016 - 01 (Optional)Document Number **CR 3696**

Unincorporated _____

County of ALAMEDA, CaliforniaBrief Legal Description Buena Vista Avenue**CORNER TYPE**

Government Corner ☐ Control ☐
 Meander ☐ Property ☐
 Rancho ☐ Other ☒
 Date of Survey _____, 2009

COORDINATES

(Optional)

N. 430,624.1
 E. 1,642,816.1
 Zone _____ Datum _____
 Elev. _____

Corner - Left as found ☒ Found and tagged ☐ Established ☐ Reestablished ☐ Rebuilt ☐

In compliance with Section 8771 of the Professional Land Surveyors' Act, this corner record is being filed to
 ESTABLISH ☒ / REESTABLISH ☐ the position of an existing monument PRIOR ☐ / SUBSEQUENT ☐
 to street or highway reconstruction. (Use this portion only when applicable.)

Identification and type of corner found: Evidence used to identify or procedure used to establish or reestablish the corner:
Iron Pipe found at centerline Buena Vista Ave.

Established 4 reference points - set 1/2" rebar with plastic cap stamped "ACPWA SURVEYOR".

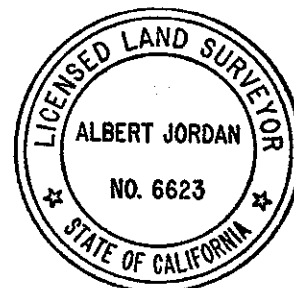
A description of the physical condition of the monument as found and as set or reset: _____
Iron Pipe without tack found in good condition.

As a recovery aide, with Tesla Rd. to the south, the monument is approx. 40+13 feet N'ly

SURVEYOR'S STATEMENT

This Corner Record was prepared by me or under my direction in conformance with
 the Land Surveyors' Act on 08-10 20 09.

Signed Albert Jordan L.S. or R.C.E. Number PLS 6623
Expires: 12-31-09

**COUNTY SURVEYOR'S STATEMENT**

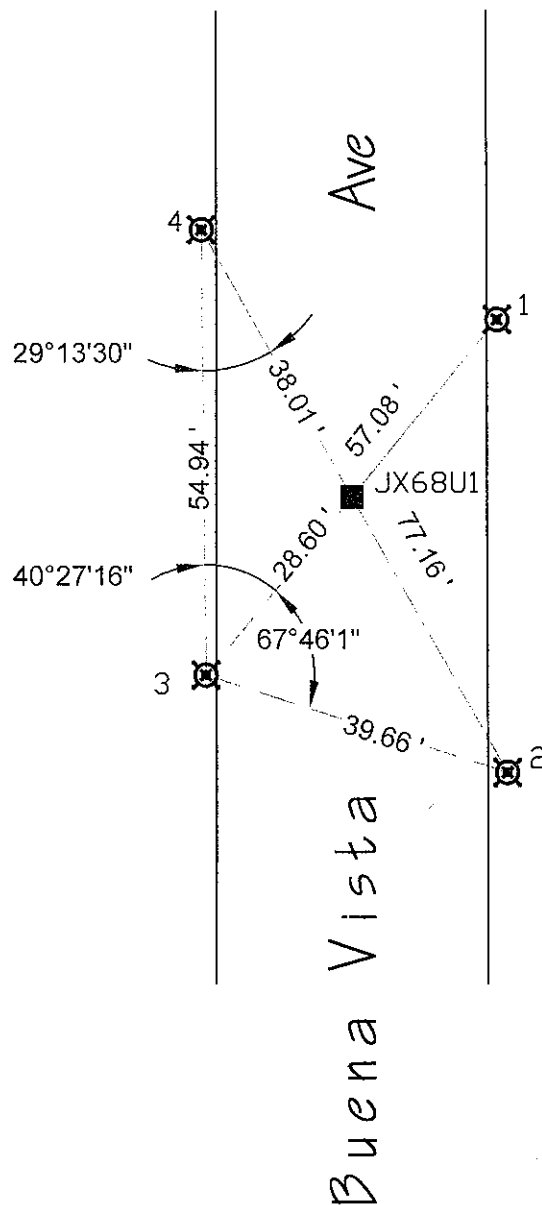
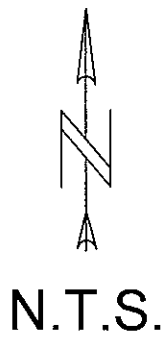
This Corner Record was received 6-16 20 09 and examined
 and filed August 10 20 09.

Signed Russell R. Penland, Jr. Title County Surveyor



County Surveyor's Comment _____

JX68U1



Legend

Found: Iron Pipe



Set: $\frac{1}{2}$ " Rebar w/Plastic Cap



Credits

Lead: Brian Danforth

Assist.: Steven Sousa

Computations: Joanne Fetzer

CAD: Al Jordan

File Name: CR3696_Thursday_20090728 CR Page 2 with dxf.dwg

Job#: R23343

Reference(s)

PM 523, Bk 61, Pg 84

RS 251, Bk 5, Pg 89

Alameda County Monument Id System (PTa...) **JX68U1**